

LAPORAN STATISTIK LAMARAN WEB PTJ UPM NOVEMBER 2022

VERSI 1.0

KANDUNGAN

MUKA SURAT

| | | |
|-----|------------------------------------------------------|----|
| | Terminologi: Alamat URL | |
| 1.0 | Data Laman Web UPM | 1 |
| 2.0 | Data Laman Web PTJ: SAIZ LAMAN WEB | 2 |
| 3.0 | Data Laman Web PTJ: PAUTAN MASUK (<i>BACKLINK</i>) | 9 |
| 4.0 | Data Laman Web PTJ: DOMAIN | 14 |
| 5.0 | Data Laman Web PTJ: ARTIKEL & BERITA | 21 |
| 6.0 | Data Laman Web PTJ: MEDIA SOSIAL (<i>FOLLOWER</i>) | 28 |
| 7.0 | Data Laman Web PTJ: BROKENLINK | 36 |
| 8.0 | Data Laman Web PTJ: PUTRA BAKTI | 43 |
| 9.0 | Data Laman Web PTJ: CARIAN DI WEB UPM | 47 |

MAKLUMAT UNTUK DIHUBUNGI:
webptj@upm.edu.my

TERMINOLOGI: ALAMAT URL

FAKULTI

| | | |
|----|---------|-----------------------------------------------|
| 1 | agri | FAKULTI PERTANIAN |
| 2 | biotech | FAKULTI BIOTEKNOLOGI DAN SAINS BIOMOLEKUL |
| 3 | btu | UPM KAMPUS BINTULU SARAWAK |
| 4 | eco1 | FAKULTI EKOLOGI MANUSIA |
| 5 | econ | SEKOLAH PERNIAGAAN DAN EKONOMI UPM |
| 6 | educ | FAKULTI PENGAJIAN PENDIDIKAN |
| 7 | eng | FAKULTI KEJURUTERAAN |
| 8 | fbmk | FAKULTI BAHASA MODEN DAN KOMUNIKASI |
| 9 | food | FAKULTI SAINS DAN TEKNOLOGI MAKANAN |
| 10 | forenv | FAKULTI PERHUTANAN DAN ALAM SEKITAR |
| 11 | frsb | FAKULTI REKABENTUK DAN SENIBINA |
| 12 | fsktm | FAKULTI SAINS KOMPUTER DAN TEKNOLOGI MAKLUMAT |
| 13 | medic | FAKULTI PERUBATAN DAN SAINS KESIHATAN |
| 14 | science | FAKULTI SAINS |
| 15 | vet | FAKULTI PERUBATAN VETERINAR |

INSTITUT

| | | |
|----|----------|----------------------------------------------------|
| 1 | halal | INSTITUT PENYELIDIKAN PRODUK HALAL |
| 2 | i-aquas | INSTITUT ANTARABANGSA AKUAKULTUR DAN SAINS AKUATIK |
| 3 | ibs | INSTITUT BIOSAINS |
| 4 | ikp | INSTITUT KAJIAN PERLADANGAN |
| 5 | inspem | INSTITUT PENYELIDIKAN MATEMATIK |
| 6 | introp | INSTITUT PERHUTANAN TROPIKA DAN PRODUK HUTAN |
| 7 | ipsas | INSTITUT PENGAJIAN SAINS SOSIAL |
| 8 | itafos | INSTITUT PERTANIAN TROPIKA DAN SEKURITI MAKANAN |
| 9 | ion2 | INSTITUT NANOSAINS DAN NANOTEKNOLOGI |
| 10 | myageing | INSTITUT PENYELIDIKAN PENUAAN MALAYSIA |

PUSAT

| | | |
|----|----------|-----------------------------------------------------------------|
| 1 | alumni | PUSAT PERHUBUNGAN ALUMNI |
| 2 | asasi | PUSAT ASASI SAINS PERTANIAN |
| 3 | cade | PUSAT PEMBANGUNAN AKADEMIK |
| 4 | calc | PUSAT PEMAJUAN KOMPETENSI BAHASA |
| 5 | care | PUSAT SUMBER DAN PENDIDIKAN KANSER |
| 6 | cem | PUSAT PEMBANGUNAN KEUSAHAWANAN DAN KEBOLEHPASARAN GRADUAN |
| 7 | cirnet | PUSAT HUBUNGAN DAN JARINGAN INDUSTRI |
| 8 | cqa | PUSAT JAMINAN KUALITI |
| 9 | idec | PUSAT PEMBANGUNAN MAKLUMAT DAN KOMUNIKASI |
| 10 | intl | PUSAT ANTARABANGSA |
| 11 | penerbit | PUSAT PENERBIT UPM |
| 12 | pic | PUSAT ISLAM |
| 13 | pkpp | PUSAT KOKURIKULUM DAN PEMBANGUNAN PELAJAR |
| 14 | pkssaas | PUSAT KEBUDAYAAN DAN KESENIAN SULTAN SALAHUDDIN ABDUL AZIZ SHAH |
| 15 | pku | PUSAT KESIHATAN UNIVERSITI |
| 16 | ppdn | PUSAT PENGIMEJAN DIAGNOSTIK NUKLEAR |
| 17 | pspk | PUSAT STRATEGI DAN PERHUBUNGAN KORPORAT |
| 18 | rmc | PUSAT PENGURUSAN PENYELIDIKAN |
| 19 | tpu | PUSAT PERTANIAN PUTRA |
| 20 | uctc | PUSAT TRANSFORMASI KOMUNITI UNIVERSITI |
| 21 | wazan | PUSAT PENGURUSAN WAKAF, ZAKAT DAN ENDOWMEN |

KOLEJ

| | | |
|---|--------|-------------------------------------|
| 1 | k10 | KOLEJ SEPULUH |
| 2 | k12 | KOLEJ DUA BELAS |
| 3 | k14 | KOLEJ EMPAT BELAS |
| 4 | kmb | KOLEJ TAN SRI MUSTAFFA BABJEE |
| 5 | kc | KOLEJ CANCELOR |
| 6 | kosass | KOLEJ SULTAN ALAEDDIN SULEIMAN SHAH |
| 7 | kpz | KOLEJ PENDITA ZA'ABA |
| 8 | ktag | KOLEJ TAN SRI AISHAH GHANI |
| 9 | kti | KOLEJ TUN DR ISMAIL |

PEJABAT / JABATAN / BAHAGIAN

| | | |
|----|-----------|-------------------------------------------------------------------|
| 1 | akademik | BAHAGIAN KEMASUKAN & BAHAGIAN URUS TADBIR AKADEMIK |
| 2 | audit | BAHAGIAN AUDIT DALAM |
| 3 | bursar | PEJABAT BENDAHARI |
| 4 | bku | BAHAGIAN KESELAMATAN |
| 5 | bkupm | BAHAGIAN KAUNSELING UPM |
| 6 | bpp | BAHAGIAN PERUMAHAN DAN PENEMPATAN |
| 7 | devel | PEJABAT PEMBANGUNAN DAN PENGURUSAN ASET |
| 8 | hep | BAHAGIAN HAL EHWAL PELAJAR |
| 9 | osh | PEJABAT PENGURUSAN KESELAMATAN DAN KESIHATAN PEKERJAAN |
| 10 | palapes | PASUKAN LATIHAN PEGAWAI SIMPANAN |
| 11 | pendaftar | PEJABAT PENDAFTAR |
| 12 | pnc | PEJABAT NAIB CANCELOR |
| 13 | ppuu | PEJABAT PENASIHAT UNDANG-UNDANG |
| 14 | tncjinm | PEJABAT TIMBALAN NAIB CANCELOR (JARINGAN INDUSTRI DAN MASYARAKAT) |
| 15 | tncpi | PEJABAT TIMBALAN NAIB CANCELOR (PENYELIDIKAN DAN INOVASI) |
| 16 | sgs | SEKOLAH PENGAJIAN SISWAZAH |

PERKHIDMATAN

| | | |
|---|-------------|---------------------------------|
| 1 | hpupm | HOSPITAL PENGAJAR UPM |
| 2 | lib | PERPUSTAKAAN SULTAN ABDUL SAMAD |
| 3 | sciencepark | PUTRA SCIENCE PARK |
| 4 | sukan | AKADEMI SUKAN |

Nota:

1. KOLEJ TUJUH BELAS telah bertukar kepada KOLEJ TAN SRI MUSTAFFA BABJEE.
2. KOLEJ TIGA BELAS telah bertukar kepada KOLEJ TAN SRI AISHAH GHANI

1.0

DATA LAMAN WEB UPM SEHINGGA NOVEMBER 2022

| | | JUMLAH | | | | | | |
|---------------------|----------------------------------------------------------------------------------------------------------------------------------------------------------------------------------------|---------------------|-----------|---------|---------|--------|--------|--|
| 1 | SAIZ | 23,560 | | | | | | |
| 2 | PAUTAN MASUK (<i>BACKLINK</i>) | 11,969,286 | | | | | | |
| 3 | DOMAIN | 52,362 | | | | | | |
| 4 | ARTIKEL | 172 | | | | | | |
| 5 | BERITA | 3,804 | | | | | | |
| 6 | MEDIA SOSIAL (<i>FOLLOWER</i>) | 250,200 | | | | | | |
| | <table border="1"><thead><tr><th>FACEBOOK (FAN PAGE)</th><th>INSTAGRAM</th><th>TWITTER</th></tr></thead><tbody><tr><td>208,000</td><td>26,000</td><td>16,200</td></tr></tbody></table> | FACEBOOK (FAN PAGE) | INSTAGRAM | TWITTER | 208,000 | 26,000 | 16,200 | |
| FACEBOOK (FAN PAGE) | INSTAGRAM | TWITTER | | | | | | |
| 208,000 | 26,000 | 16,200 | | | | | | |
| 7 | BROKENLINK | 10 | | | | | | |
| 8 | PUTRA BAKTI | 308 | | | | | | |

2.0

DATA LAMAN WEB PTJ: SAIZ LAMAN WEB

| | |
|--------------------------|--------|
| | JUMLAH |
| DATA LAMAN WEB UPM: SAIZ | 23,560 |

MUKA SURAT

| | | |
|-----|----------------------------------------|---|
| 2.1 | Data SAIZ: FAKULTI | 3 |
| 2.2 | Data SAIZ: INSTITUT | 4 |
| 2.3 | Data SAIZ: PUSAT | 5 |
| 2.4 | Data SAIZ: PEJABAT/ JABATAN / BAHAGIAN | 6 |
| 2.5 | Data SAIZ: KOLEJ | 7 |
| 2.6 | Data SAIZ: PERKHIDMATAN | 8 |

DEFINISI Jumlah saiz seluruh laman web PTJ termasuk setiap berita, aktiviti, kandungan dan sebagainya.

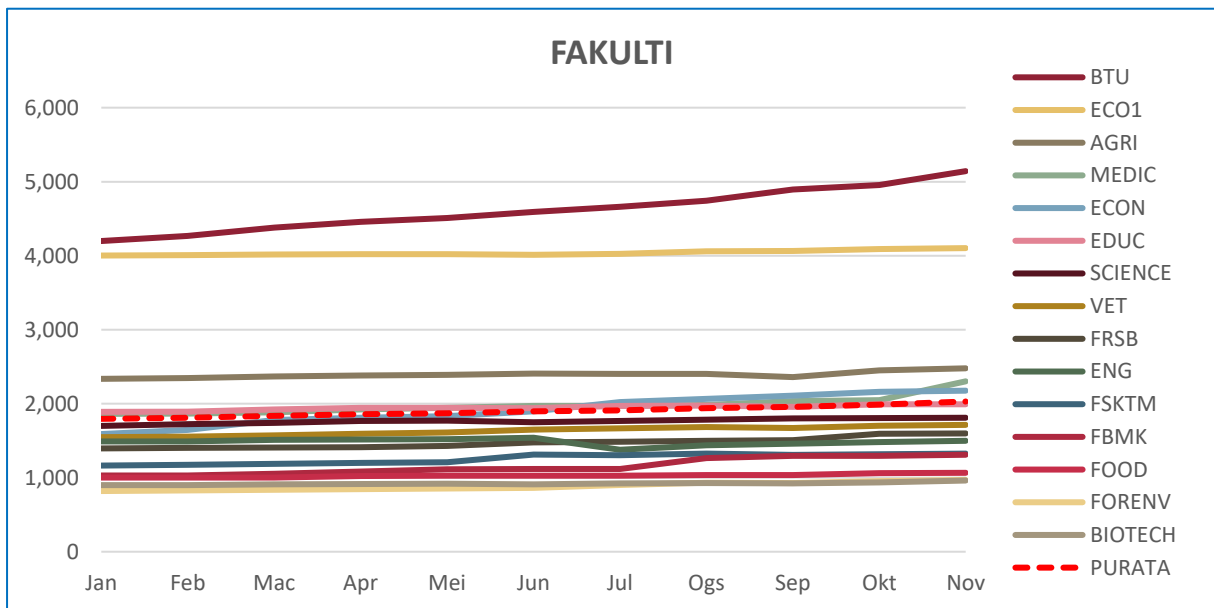
SUMBER DATA <https://www.upm.edu.my/info4web>

DATA SAIZ: FAKULTI

■ Tertinggi dalam bulan semasa

| ALAMAT URL | Jan | Feb | Mac | Apr | Mei | Jun | Jul | Ogs | Sep | Okt | Nov |
|------------|-------|-------|-------|-------|-------|-------|-------|-------|-------|-------|-------|
| BTU | 4,198 | 4,266 | 4,380 | 4,458 | 4,508 | 4,592 | 4,662 | 4,744 | 4,894 | 4,956 | 5,142 |
| ECO1 | 4,002 | 4,006 | 4,014 | 4,020 | 4,022 | 4,012 | 4,024 | 4,058 | 4,062 | 4,088 | 4,102 |
| AGRI | 2,336 | 2,346 | 2,368 | 2,382 | 2,388 | 2,406 | 2,402 | 2,404 | 2,360 | 2,450 | 2,478 |
| MEDIC | 1,862 | 1,866 | 1,884 | 1,922 | 1,944 | 1,968 | 1,970 | 1,982 | 2,036 | 2,050 | 2,302 |
| ECON | 1,590 | 1,646 | 1,778 | 1,812 | 1,832 | 1,896 | 2,022 | 2,066 | 2,108 | 2,162 | 2,176 |
| EDUC | 1,890 | 1,894 | 1,924 | 1,944 | 1,944 | 1,942 | 1,972 | 1,974 | 1,956 | 1,992 | 1,992 |
| SCIENCE | 1,700 | 1,724 | 1,740 | 1,766 | 1,770 | 1,748 | 1,768 | 1,786 | 1,800 | 1,804 | 1,810 |
| VET | 1,548 | 1,556 | 1,572 | 1,592 | 1,610 | 1,650 | 1,668 | 1,684 | 1,672 | 1,702 | 1,714 |
| FRSB | 1,396 | 1,402 | 1,408 | 1,410 | 1,430 | 1,476 | 1,484 | 1,498 | 1,508 | 1,592 | 1,598 |
| ENG | 1,492 | 1,492 | 1,510 | 1,516 | 1,522 | 1,540 | 1,378 | 1,440 | 1,458 | 1,482 | 1,498 |
| FSKTM | 1,164 | 1,174 | 1,188 | 1,200 | 1,208 | 1,314 | 1,302 | 1,326 | 1,310 | 1,316 | 1,324 |
| FBMK | 1,030 | 1,030 | 1,052 | 1,082 | 1,112 | 1,120 | 1,120 | 1,264 | 1,294 | 1,294 | 1,310 |
| FOOD | 1,002 | 1,002 | 1,002 | 1,022 | 1,026 | 1,028 | 1,028 | 1,036 | 1,034 | 1,062 | 1,066 |
| FORENV | 820 | 830 | 836 | 844 | 856 | 864 | 902 | 932 | 926 | 952 | 970 |
| BIOTECH | 900 | 900 | 912 | 916 | 918 | 910 | 924 | 926 | 924 | 938 | 962 |
| PURATA | 1,795 | 1,809 | 1,838 | 1,859 | 1,873 | 1,898 | 1,908 | 1,941 | 1,956 | 1,989 | 2,030 |

JADUAL 2.1: Data Saiz Fakulti



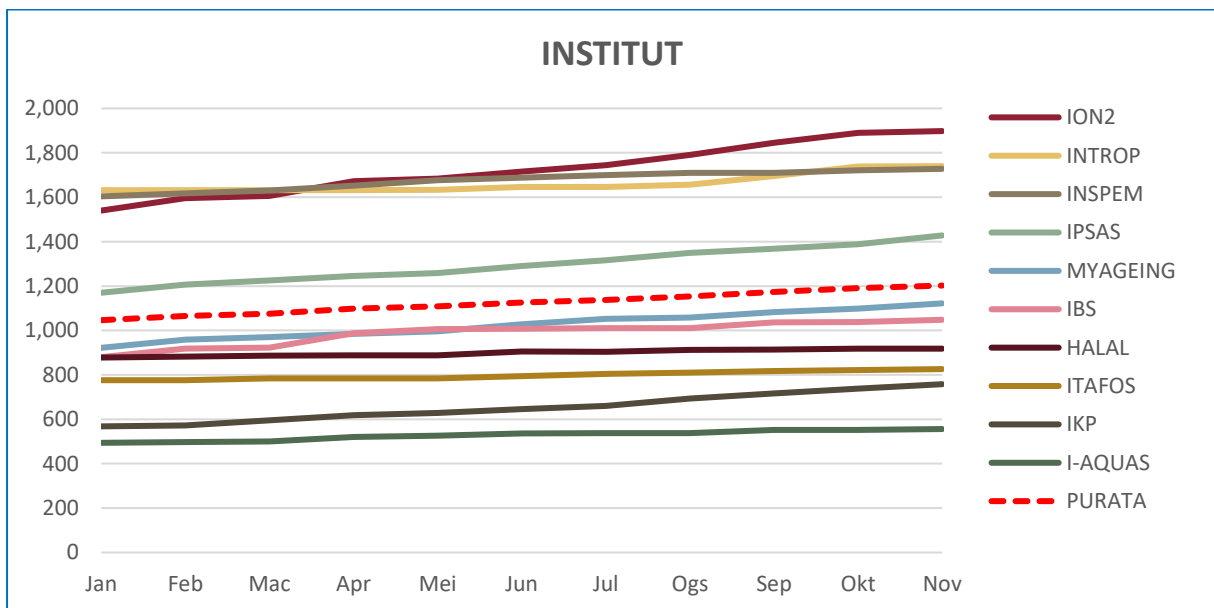
RAJAH 2.1: Data Saiz Fakulti

DATA SAIZ: INSTITUT

■ Tertinggi dalam bulan semasa

| ALAMAT URL | Jan | Feb | Mac | Apr | Mei | Jun | Jul | Ogs | Sep | Okt | Nov |
|------------|-------|-------|-------|-------|-------|-------|-------|-------|-------|-------|-------|
| 1 ION2 | 1,540 | 1,596 | 1,606 | 1,672 | 1,684 | 1,716 | 1,744 | 1,790 | 1,846 | 1,890 | 1,898 |
| 2 INTROP | 1,632 | 1,632 | 1,632 | 1,632 | 1,634 | 1,646 | 1,646 | 1,656 | 1,696 | 1,738 | 1,740 |
| 3 INSPEM | 1,604 | 1,618 | 1,630 | 1,652 | 1,676 | 1,688 | 1,700 | 1,710 | 1,710 | 1,722 | 1,728 |
| 4 IPSAS | 1,170 | 1,206 | 1,226 | 1,246 | 1,258 | 1,290 | 1,316 | 1,350 | 1,368 | 1,388 | 1,428 |
| 5 MYAGEING | 922 | 958 | 970 | 984 | 996 | 1,028 | 1,052 | 1,058 | 1,082 | 1,098 | 1,122 |
| 6 IBS | 880 | 918 | 922 | 988 | 1,006 | 1,008 | 1,010 | 1,010 | 1,036 | 1,038 | 1,048 |
| 7 HALAL | 878 | 882 | 886 | 888 | 888 | 906 | 904 | 912 | 914 | 918 | 918 |
| 8 ITAFOS | 776 | 776 | 784 | 784 | 784 | 794 | 804 | 810 | 818 | 822 | 826 |
| 9 IKP | 568 | 572 | 596 | 618 | 628 | 646 | 660 | 694 | 716 | 738 | 758 |
| 10 I-AQUAS | 494 | 498 | 500 | 520 | 526 | 536 | 538 | 538 | 552 | 552 | 556 |
| PURATA | 1,046 | 1,066 | 1,075 | 1,098 | 1,108 | 1,126 | 1,137 | 1,153 | 1,174 | 1,190 | 1,202 |

JADUAL 2.2: Data Saiz Institut



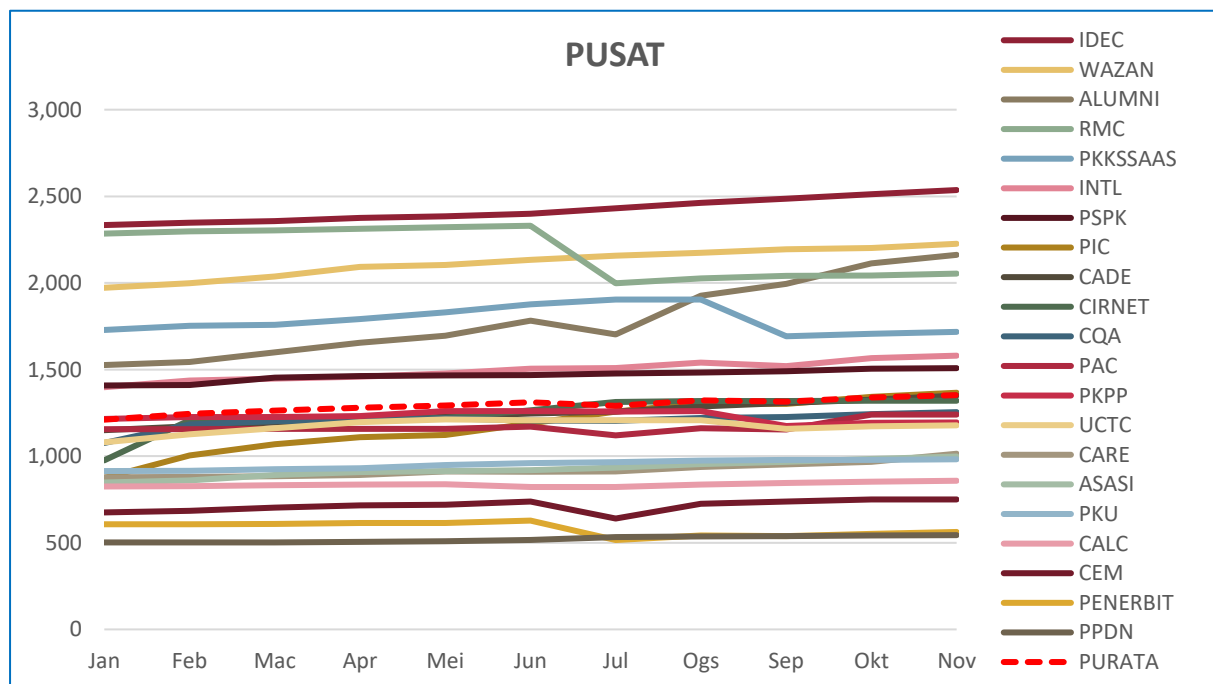
RAJAH 2.2: Data Saiz Institut

DATA SAIZ: PUSAT

■ Tertinggi dalam bulan semasa

| ALAMAT URL | Jan | Feb | Mac | Apr | Mei | Jun | Jul | Ogs | Sep | Okt | Nov |
|-------------|-------|-------|-------|-------|-------|-------|-------|-------|-------|-------|-------|
| 1 IDEC | 2,334 | 2,348 | 2,356 | 2,376 | 2,384 | 2,400 | 2,430 | 2,462 | 2,486 | 2,512 | 2,536 |
| 2 WAZAN | 1,972 | 1,998 | 2,038 | 2,092 | 2,104 | 2,134 | 2,158 | 2,174 | 2,194 | 2,202 | 2,226 |
| 3 ALUMNI | 1,526 | 1,544 | 1,600 | 1,654 | 1,696 | 1,782 | 1,702 | 1,926 | 1,994 | 2,112 | 2,162 |
| 4 RMC | 2,284 | 2,298 | 2,304 | 2,312 | 2,322 | 2,330 | 1,998 | 2,026 | 2,040 | 2,042 | 2,054 |
| 5 PKKSSAAS | 1,728 | 1,752 | 1,758 | 1,792 | 1,830 | 1,876 | 1,904 | 1,904 | 1,692 | 1,706 | 1,718 |
| 6 INTL | 1,398 | 1,436 | 1,448 | 1,458 | 1,478 | 1,504 | 1,508 | 1,540 | 1,520 | 1,566 | 1,580 |
| 7 PSPK | 1,408 | 1,410 | 1,454 | 1,462 | 1,466 | 1,468 | 1,478 | 1,482 | 1,490 | 1,504 | 1,508 |
| 8 PIC | 874 | 1,004 | 1,068 | 1,110 | 1,122 | 1,188 | 1,258 | 1,306 | 1,302 | 1,342 | 1,366 |
| 9 CADE | 1,150 | 1,172 | 1,194 | 1,208 | 1,228 | 1,246 | 1,258 | 1,286 | 1,308 | 1,326 | 1,350 |
| 10 CIRNET | 976 | 1,208 | 1,212 | 1,212 | 1,220 | 1,264 | 1,312 | 1,318 | 1,318 | 1,320 | 1,320 |
| 11 CQA | 1,076 | 1,184 | 1,202 | 1,208 | 1,218 | 1,206 | 1,204 | 1,220 | 1,226 | 1,242 | 1,254 |
| 12 PAC | 1,156 | 1,156 | 1,158 | 1,158 | 1,158 | 1,170 | 1,120 | 1,162 | 1,154 | 1,240 | 1,240 |
| 13 PKPP | 1,214 | 1,226 | 1,226 | 1,232 | 1,260 | 1,260 | 1,258 | 1,260 | 1,174 | 1,192 | 1,194 |
| 14 UCTC | 1,080 | 1,126 | 1,162 | 1,196 | 1,212 | 1,208 | 1,208 | 1,208 | 1,158 | 1,172 | 1,178 |
| 15 CARE | 878 | 880 | 884 | 892 | 912 | 910 | 912 | 938 | 952 | 968 | 1,014 |
| 16 ASASI | 848 | 860 | 892 | 908 | 914 | 920 | 934 | 954 | 968 | 984 | 998 |
| 17 PKU | 914 | 916 | 924 | 930 | 948 | 960 | 966 | 974 | 978 | 978 | 982 |
| 18 CALC | 824 | 826 | 832 | 836 | 838 | 822 | 822 | 836 | 846 | 852 | 858 |
| 19 CEM | 676 | 684 | 702 | 716 | 720 | 738 | 640 | 726 | 738 | 750 | 750 |
| 20 PENERBIT | 606 | 606 | 608 | 614 | 614 | 628 | 516 | 542 | 538 | 552 | 562 |
| 21 PPDN | 502 | 502 | 502 | 506 | 508 | 516 | 532 | 536 | 538 | 542 | 544 |
| PURATA | 1,211 | 1,245 | 1,263 | 1,280 | 1,293 | 1,311 | 1,291 | 1,323 | 1,315 | 1,338 | 1,352 |

JADUAL 2.3: Data Saiz Pusat



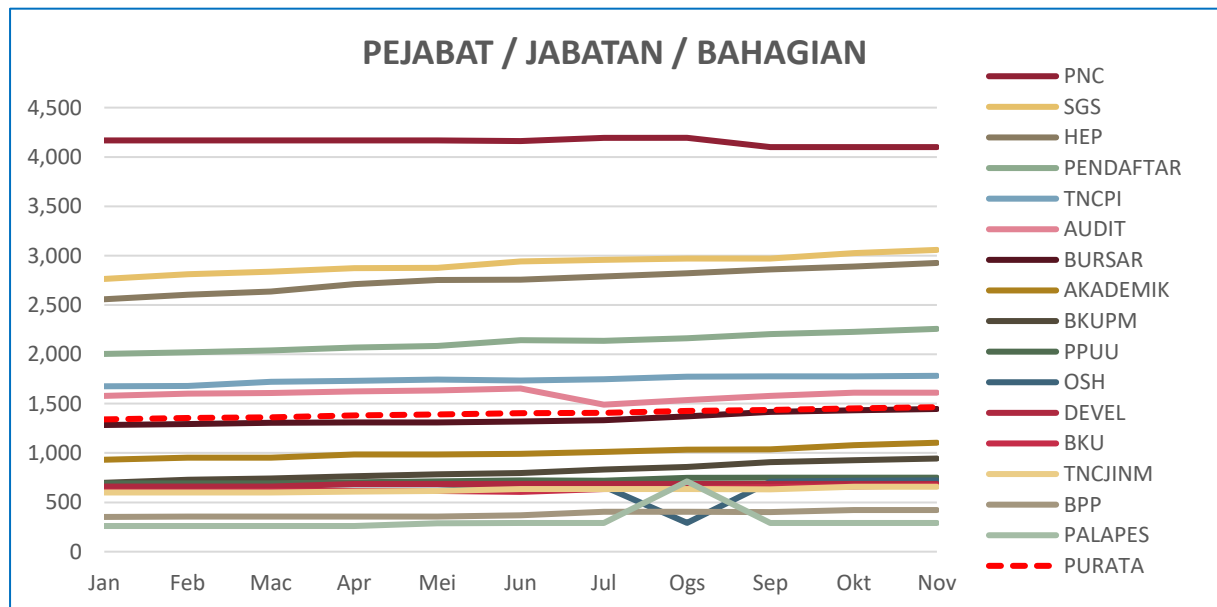
RAJAH 2.3: Data Saiz Pusat

DATA SAIZ: PEJABAT / JABATAN / BAHAGIAN

■ Tertinggi dalam bulan semasa

| ALAMAT URL | Jan | Feb | Mac | Apr | Mei | Jun | Jul | Ogs | Sep | Okt | Nov |
|------------|-------|-------|-------|-------|-------|-------|-------|-------|-------|-------|-------|
| PNC | 4,166 | 4,166 | 4,166 | 4,166 | 4,168 | 4,160 | 4,192 | 4,194 | 4,100 | 4,100 | 4,100 |
| SGS | 2,764 | 2,810 | 2,836 | 2,872 | 2,878 | 2,942 | 2,958 | 2,972 | 2,972 | 3,026 | 3,058 |
| HEP | 2,558 | 2,604 | 2,636 | 2,712 | 2,752 | 2,756 | 2,790 | 2,822 | 2,860 | 2,888 | 2,926 |
| PENDAFTAR | 2,004 | 2,020 | 2,038 | 2,070 | 2,084 | 2,142 | 2,138 | 2,162 | 2,206 | 2,226 | 2,258 |
| TNCPI | 1,676 | 1,680 | 1,722 | 1,730 | 1,744 | 1,734 | 1,746 | 1,772 | 1,778 | 1,778 | 1,782 |
| AUDIT | 1,578 | 1,602 | 1,608 | 1,624 | 1,634 | 1,654 | 1,490 | 1,538 | 1,580 | 1,610 | 1,610 |
| BURSAR | 1,284 | 1,294 | 1,306 | 1,308 | 1,308 | 1,318 | 1,332 | 1,370 | 1,416 | 1,434 | 1,446 |
| AKADEMIK | 932 | 952 | 954 | 984 | 986 | 992 | 1,010 | 1,034 | 1,038 | 1,078 | 1,104 |
| BKUPM | 698 | 730 | 742 | 764 | 784 | 798 | 832 | 860 | 908 | 928 | 944 |
| PPUU | 692 | 692 | 692 | 704 | 714 | 724 | 718 | 748 | 750 | 750 | 750 |
| OSH | 616 | 618 | 618 | 620 | 620 | 652 | 662 | 292 | 708 | 718 | 722 |
| DEVEL | 660 | 660 | 660 | 686 | 686 | 686 | 686 | 686 | 686 | 686 | 686 |
| BKU | 610 | 610 | 614 | 614 | 614 | 606 | 634 | 638 | 658 | 660 | 672 |
| TNCJINM | 600 | 600 | 600 | 610 | 614 | 634 | 634 | 634 | 630 | 658 | 658 |
| BPP | 352 | 356 | 356 | 356 | 356 | 370 | 406 | 406 | 402 | 422 | 422 |
| PALAPES | 260 | 260 | 260 | 260 | 288 | 292 | 292 | 712 | 292 | 292 | 292 |
| PURATA | 1,341 | 1,353 | 1,363 | 1,380 | 1,389 | 1,404 | 1,408 | 1,428 | 1,437 | 1,453 | 1,464 |

JADUAL 2.4: Data Saiz Pejabat / Jabatan / Bahagian



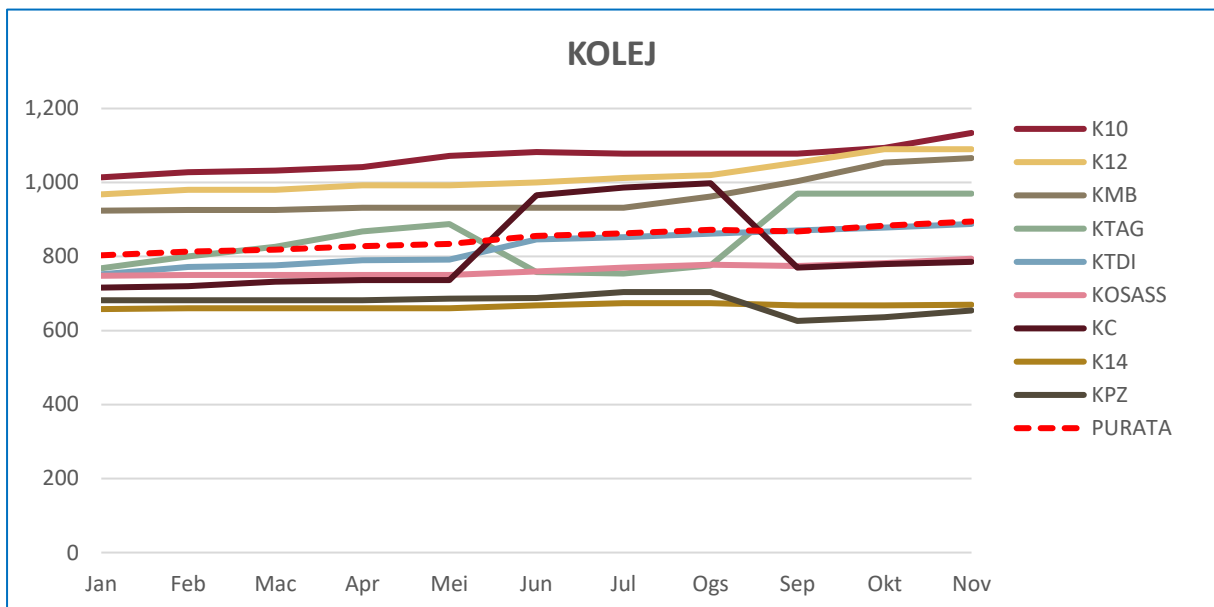
RAJAH 2.4: Data Saiz Pejabat / Jabatan / Bahagian

DATA SAIZ: KOLEJ

■ Tertinggi dalam bulan semasa

| ALAMAT URL | Jan | Feb | Mac | Apr | Mei | Jun | Jul | Ogs | Sep | Okt | Nov |
|------------|-------|-------|-------|-------|-------|-------|-------|-------|-------|-------|-------|
| 1 K10 | 1,014 | 1,028 | 1,032 | 1,042 | 1,072 | 1,082 | 1,078 | 1,078 | 1,078 | 1,094 | 1,134 |
| 2 K12 | 968 | 980 | 980 | 992 | 992 | 1,000 | 1,012 | 1,020 | 1,054 | 1,090 | 1,090 |
| 3 KMB | 924 | 926 | 926 | 932 | 932 | 932 | 932 | 962 | 1,004 | 1,054 | 1,066 |
| 4 KTAG | 768 | 800 | 826 | 868 | 888 | 758 | 754 | 776 | 970 | 970 | 970 |
| 5 KTDI | 752 | 772 | 776 | 790 | 792 | 846 | 852 | 862 | 870 | 878 | 888 |
| 6 KOSASS | 748 | 750 | 750 | 750 | 750 | 760 | 770 | 778 | 774 | 782 | 794 |
| 7 KC | 716 | 720 | 732 | 736 | 736 | 966 | 986 | 998 | 770 | 780 | 786 |
| 8 K14 | 658 | 660 | 660 | 660 | 660 | 668 | 674 | 674 | 668 | 668 | 670 |
| 9 KPZ | 682 | 682 | 682 | 682 | 686 | 688 | 704 | 704 | 626 | 636 | 654 |
| PURATA | 803 | 813 | 818 | 828 | 834 | 856 | 862 | 872 | 868 | 884 | 895 |

JADUAL 2.5: Data Saiz Kolej



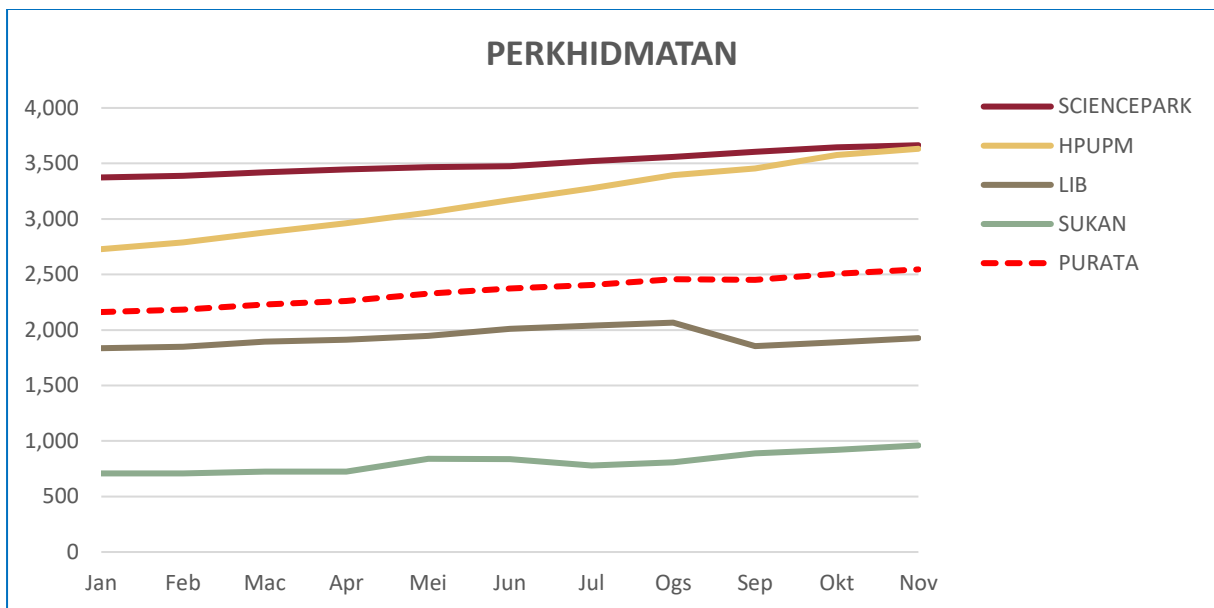
RAJAH 2.5: Data Saiz Kolej

DATA SAIZ: PERKHIDMATAN

■ Tertinggi dalam bulan semasa

| ALAMAT URL | Jan | Feb | Mac | Apr | Mei | Jun | Jul | Ogs | Sep | Okt | Nov |
|---------------|-------|-------|-------|-------|-------|-------|-------|-------|-------|-------|-------|
| 1 SCIENCEPARK | 3,374 | 3,390 | 3,420 | 3,446 | 3,466 | 3,476 | 3,522 | 3,558 | 3,606 | 3,644 | 3,664 |
| 2 HPUPM | 2,728 | 2,788 | 2,878 | 2,962 | 3,058 | 3,170 | 3,276 | 3,394 | 3,454 | 3,576 | 3,632 |
| 3 LIB | 1,836 | 1,848 | 1,896 | 1,912 | 1,946 | 2,010 | 2,040 | 2,066 | 1,856 | 1,888 | 1,926 |
| 4 SUKAN | 708 | 708 | 724 | 724 | 840 | 838 | 778 | 808 | 890 | 920 | 960 |
| PURATA | 2,162 | 2,184 | 2,230 | 2,261 | 2,328 | 2,374 | 2,404 | 2,457 | 2,452 | 2,507 | 2,546 |

JADUAL 2.6: Data Saiz Perkhidmatan



RAJAH 2.6: Data Saiz Perkhidmatan

3.0

DATA LAMAN WEB PTJ: PAUTAN MASUK (BACKLINK)

| | |
|-----------------------------------------|-------------------|
| | JUMLAH |
| DATA LAMAN WEB UPM: PAUTAN MASUK | 11,969,286 |

MUKA SURAT

| | | |
|-----|--------------------------------------------------------|----|
| 3.1 | Data PAUTAN MASUK: FAKULTI | 10 |
| 3.2 | Data PAUTAN MASUK: INSTITUT | 11 |
| 3.3 | Data PAUTAN MASUK: PUSAT | 12 |
| 3.4 | Data PAUTAN MASUK: PEJABAT / JABATAN / BAHAGIAN | 13 |
| 3.5 | Data PAUTAN MASUK: KOLEJ | 14 |
| 3.6 | Data PAUTAN MASUK : PERKHIDMATAN | 15 |

DEFINISI Jumlah pautan masuk yang diterima laman web PTJ dari laman web luar UPM.

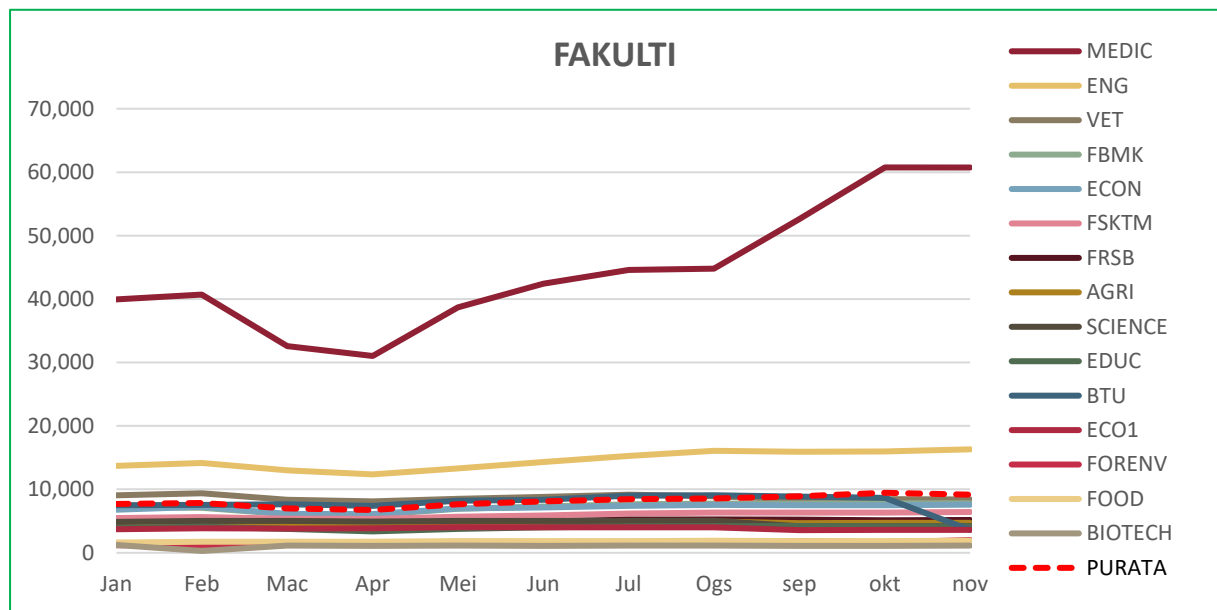
SUMBER DATA <https://www.ahrefs.com>

DATA PAUTAN MASUK: FAKULTI

■ Tertinggi dalam bulan semasa

| ALAMAT URL | Jan | Feb | Mac | Apr | Mei | Jun | Jul | Ogs | Sep | Okt | Nov |
|------------|--------|--------|--------|--------|--------|--------|--------|--------|--------|--------|--------|
| MEDIC | 39,938 | 40,718 | 32,575 | 31,029 | 38,676 | 42,438 | 44,570 | 44,794 | 52,613 | 60,747 | 60,744 |
| ENG | 13,719 | 14,156 | 12,994 | 12,361 | 13,296 | 14,320 | 15,270 | 16,102 | 15,945 | 15,964 | 16,308 |
| VET | 9,060 | 9,385 | 8,348 | 8,107 | 8,524 | 8,813 | 9,154 | 8,925 | 8,404 | 8,445 | 8,427 |
| FBMK | 7,235 | 7,071 | 6,074 | 5,981 | 6,955 | 7,273 | 7,640 | 7,747 | 7,747 | 7,800 | 7,785 |
| ECON | 6,793 | 7,249 | 6,142 | 6,112 | 6,994 | 7,122 | 7,420 | 7,564 | 7,486 | 7,496 | 7,588 |
| FSKTM | 5,494 | 5,629 | 5,380 | 5,341 | 5,662 | 5,862 | 6,179 | 6,363 | 6,344 | 6,363 | 6,433 |
| FRSB | 4,745 | 4,882 | 4,392 | 4,456 | 4,854 | 4,927 | 5,205 | 5,263 | 5,254 | 5,145 | 5,158 |
| AGRI | 4,344 | 4,572 | 4,283 | 4,211 | 4,605 | 4,735 | 4,930 | 4,916 | 4,670 | 4,715 | 4,739 |
| SCIENCE | 4,883 | 5,045 | 5,022 | 4,905 | 5,035 | 5,019 | 5,020 | 5,051 | 4,186 | 4,194 | 4,200 |
| EDUC | 3,934 | 4,123 | 3,764 | 3,376 | 3,766 | 3,995 | 4,158 | 4,225 | 4,195 | 4,172 | 4,192 |
| BTU | 7,509 | 7,533 | 7,634 | 7,406 | 8,190 | 8,343 | 9,015 | 9,072 | 8,847 | 8,682 | 3,616 |
| ECO1 | 3,700 | 3,887 | 3,836 | 3,871 | 4,037 | 4,012 | 4,020 | 4,019 | 3,570 | 3,612 | 3,613 |
| FORENV | 1,189 | 1,243 | 1,248 | 1,267 | 1,329 | 1,409 | 1,635 | 1,630 | 1,827 | 1,630 | 2,000 |
| FOOD | 1,623 | 1,739 | 1,724 | 1,765 | 1,846 | 1,847 | 1,861 | 1,889 | 1,843 | 1,837 | 1,901 |
| BIOTECH | 1,240 | 294 | 1,164 | 1,107 | 1,136 | 1,092 | 1,118 | 1,129 | 1,095 | 1,103 | 1,120 |
| PURATA | 7,694 | 7,835 | 6,972 | 6,753 | 7,660 | 8,080 | 8,480 | 8,579 | 8,935 | 9,460 | 9,188 |

JADUAL 3.1: Data Pautan Masuk Fakulti



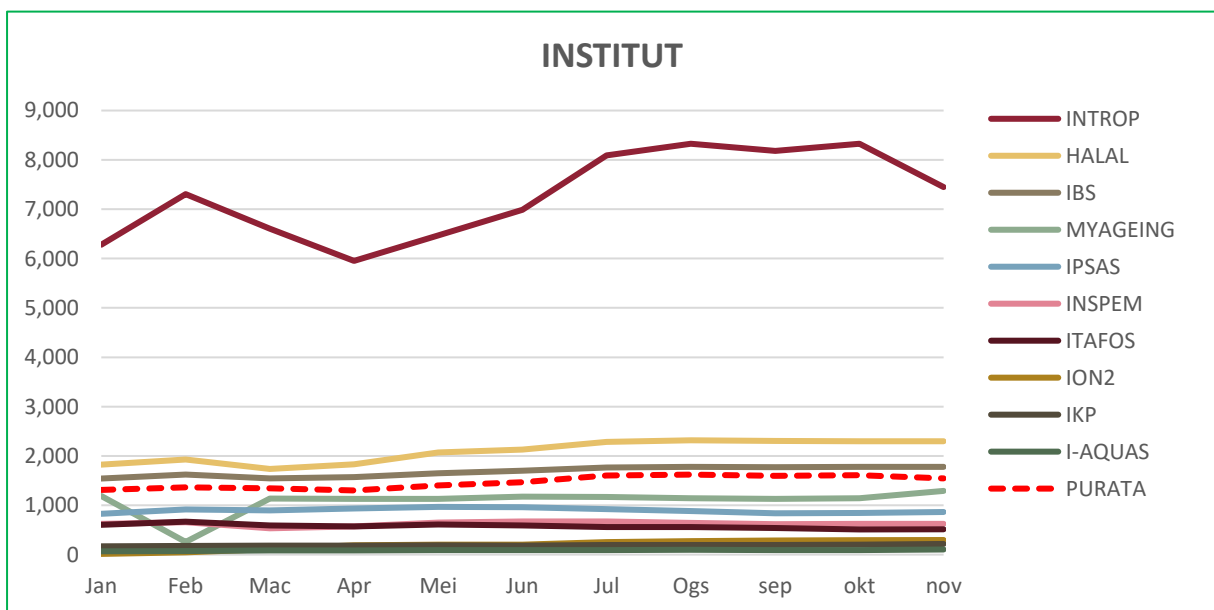
RAJAH 3.1: Data Pautan Masuk Fakulti

DATA PAUTAN MASUK: INSTITUT

■ Tertinggi dalam bulan semasa

| ALAMAT URL | Jan | Feb | Mac | Apr | Mei | Jun | Jul | Ogs | Sep | Okt | Nov |
|------------|-------|-------|-------|-------|-------|-------|-------|-------|-------|-------|-------|
| 1 INTROP | 6,280 | 7,309 | 6,606 | 5,953 | 6,468 | 6,987 | 8,092 | 8,327 | 8,180 | 8,327 | 7,451 |
| 2 HALAL | 1,824 | 1,925 | 1,736 | 1,827 | 2,068 | 2,130 | 2,284 | 2,317 | 2,303 | 2,295 | 2,295 |
| 3 IBS | 1,542 | 1,620 | 1,546 | 1,568 | 1,648 | 1,699 | 1,767 | 1,778 | 1,772 | 1,776 | 1,776 |
| 4 MYAGEING | 1,185 | 257 | 1,138 | 1,127 | 1,129 | 1,173 | 1,168 | 1,145 | 1,130 | 1,145 | 1,291 |
| 5 IPSAS | 827 | 913 | 893 | 932 | 967 | 959 | 921 | 881 | 839 | 844 | 863 |
| 6 INSPERM | 624 | 655 | 533 | 571 | 652 | 672 | 672 | 640 | 615 | 624 | 626 |
| 7 ITAFOS | 605 | 668 | 590 | 571 | 609 | 588 | 561 | 556 | 539 | 510 | 515 |
| 8 ION2 | 14 | 45 | 113 | 187 | 199 | 203 | 253 | 275 | 288 | 293 | 296 |
| 9 IKP | 168 | 173 | 179 | 184 | 186 | 183 | 192 | 196 | 197 | 204 | 216 |
| 10 I-AQUAS | 67 | 73 | 82 | 84 | 92 | 91 | 94 | 97 | 91 | 92 | 104 |
| PURATA | 1,314 | 1,364 | 1,342 | 1,300 | 1,402 | 1,469 | 1,600 | 1,621 | 1,595 | 1,611 | 1,543 |

JADUAL 3.2: Data Pautan Masuk Institut



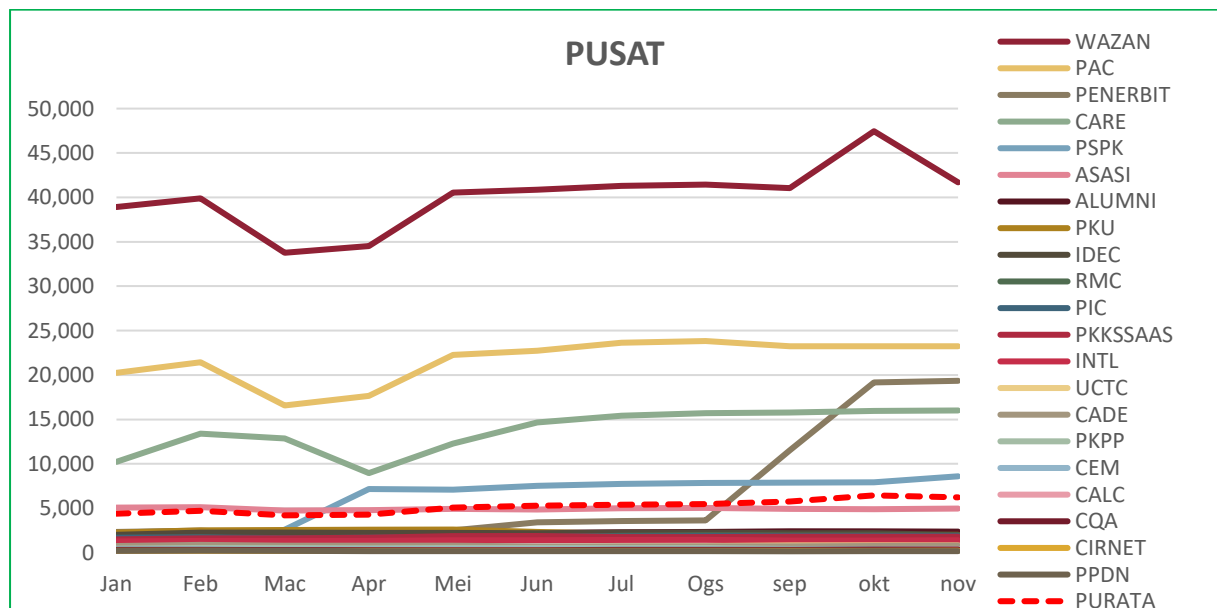
RAJAH 3.2: Data Pautan Masuk Institut

DATA PAUTAN MASUK: PUSAT

■ Tertinggi dalam bulan semasa

| ALAMAT URL | Jan | Feb | Mac | Apr | Mei | Jun | Jul | Ogs | Sep | Okt | Nov |
|-------------|--------|--------|--------|--------|--------|--------|--------|--------|--------|--------|--------|
| 1 WAZAN | 38,908 | 39,877 | 33,768 | 34,530 | 40,533 | 40,866 | 41,297 | 41,444 | 41,040 | 47,453 | 41,700 |
| 2 PAC | 20,256 | 21,431 | 16,574 | 17,648 | 22,277 | 22,752 | 23,636 | 23,829 | 23,243 | 23,251 | 23,250 |
| 3 PENERBIT | 2,335 | 2,486 | 2,028 | 1,960 | 2,519 | 3,421 | 3,550 | 3,640 | 11,537 | 19,172 | 19,349 |
| 4 CARE | 10,231 | 13,385 | 12,875 | 8,957 | 12,276 | 14,653 | 15,408 | 15,715 | 15,782 | 15,943 | 16,009 |
| 5 PSPK | 280 | 304 | 2,582 | 7,149 | 7,102 | 7,521 | 7,742 | 7,831 | 7,883 | 7,913 | 8,596 |
| 6 ASASI | 5,077 | 5,120 | 4,741 | 4,773 | 4,922 | 4,866 | 5,004 | 5,048 | 4,912 | 4,891 | 4,963 |
| 7 ALUMNI | 1,958 | 1,901 | 1,629 | 1,127 | 2,132 | 2,208 | 2,314 | 2,350 | 2,393 | 2,399 | 2,374 |
| 8 PKU | 2,273 | 2,505 | 2,552 | 2,575 | 2,600 | 2,321 | 2,121 | 2,140 | 1,913 | 1,956 | 1,996 |
| 9 IDEC | 2,024 | 2,256 | 2,244 | 2,236 | 2,236 | 2,207 | 2,245 | 2,244 | 2,199 | 2,194 | 1,992 |
| 10 RMC | 1,650 | 1,708 | 1,499 | 1,529 | 1,681 | 1,730 | 1,907 | 1,960 | 1,929 | 1,936 | 1,947 |
| 11 PIC | 1,669 | 1,712 | 1,636 | 1,681 | 1,767 | 1,788 | 1,841 | 1,859 | 1,850 | 1,857 | 1,864 |
| 12 PKKSSAAS | 1,499 | 1,602 | 1,606 | 1,670 | 1,853 | 1,878 | 1,762 | 1,774 | 1,783 | 1,788 | 1,785 |
| 13 INTL | 1,268 | 1,332 | 1,324 | 1,311 | 1,386 | 1,404 | 1,428 | 1,445 | 1,358 | 1,353 | 1,401 |
| 14 UCTC | 535 | 540 | 513 | 507 | 556 | 625 | 712 | 733 | 817 | 830 | 824 |
| 15 CADE | 755 | 877 | 781 | 768 | 775 | 700 | 726 | 719 | 717 | 733 | 795 |
| 16 PKPP | 477 | 518 | 518 | 512 | 533 | 523 | 536 | 519 | 427 | 418 | 425 |
| 17 CEM | 370 | 374 | 365 | 370 | 389 | 382 | 388 | 389 | 363 | 371 | 387 |
| 18 CALC | 212 | 256 | 245 | 258 | 280 | 277 | 292 | 293 | 290 | 299 | 357 |
| 19 CQA | 314 | 331 | 288 | 288 | 292 | 293 | 320 | 333 | 332 | 336 | 347 |
| 20 CIRNET | 191 | 200 | 188 | 194 | 207 | 206 | 205 | 208 | 196 | 197 | 226 |
| 21 PPDN | 219 | 235 | 206 | 166 | 175 | 172 | 172 | 165 | 152 | 158 | 180 |
| PURATA | 4,405 | 4,712 | 4,198 | 4,296 | 5,071 | 5,276 | 5,410 | 5,459 | 5,767 | 6,450 | 6,227 |

JADUAL 3.3: Data Pautan Masuk Pusat



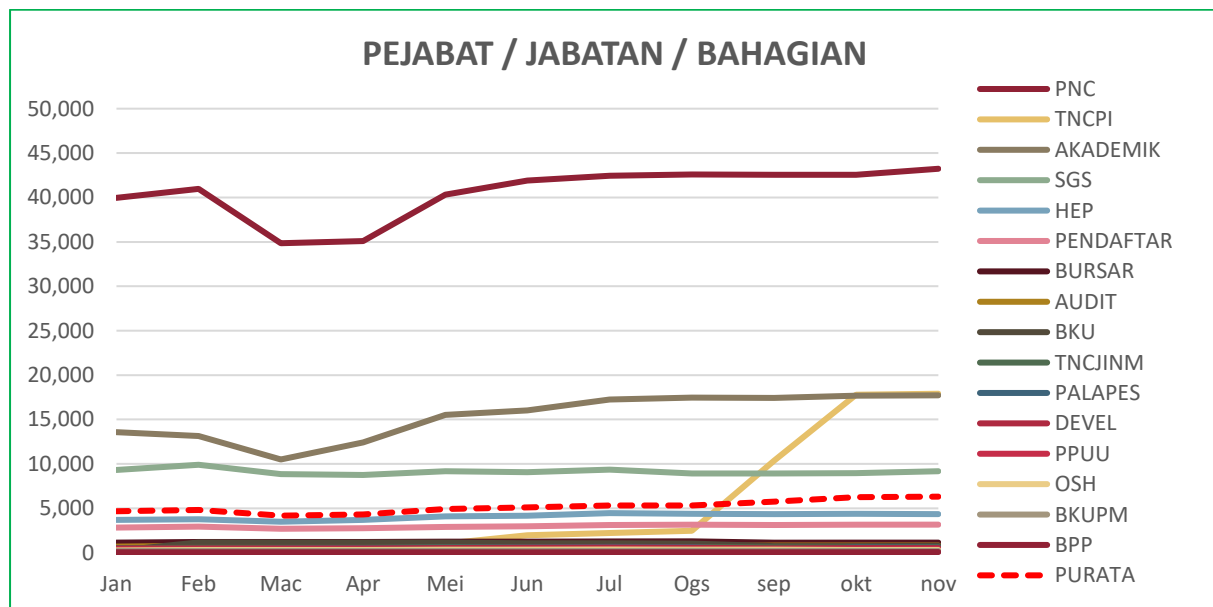
RAJAH 3.3: Data Pautan Masuk Pusat

DATA PAUTAN MASUK: PEJABAT / JABATAN / BAHAGIAN

■ Tertinggi dalam bulan semasa

| ALAMAT URL | Jan | Feb | Mac | Apr | Mei | Jun | Jul | Ogs | Sep | Okt | Nov |
|------------|--------|--------|--------|--------|--------|--------|--------|--------|--------|--------|--------|
| PNC | 39,945 | 40,951 | 34,849 | 35,075 | 40,329 | 41,913 | 42,455 | 42,577 | 42,563 | 42,565 | 43,231 |
| TNCPI | 797 | 868 | 857 | 916 | 1,037 | 1,950 | 2,228 | 2,467 | 10,353 | 17,803 | 17,903 |
| AKADEMIK | 13,586 | 13,132 | 10,501 | 12,426 | 15,537 | 16,023 | 17,266 | 17,474 | 17,435 | 17,671 | 17,722 |
| SGS | 9,304 | 9,903 | 8,868 | 8,756 | 9,169 | 9,063 | 9,364 | 8,919 | 8,918 | 8,969 | 9,185 |
| HEP | 3,685 | 3,760 | 3,490 | 3,681 | 4,107 | 4,155 | 4,462 | 4,397 | 4,334 | 4,393 | 4,339 |
| PENDAFTAR | 2,833 | 2,927 | 2,696 | 2,744 | 2,911 | 2,976 | 3,133 | 3,153 | 3,136 | 3,158 | 3,164 |
| BURSAR | 1,146 | 1,206 | 1,196 | 1,206 | 1,251 | 1,233 | 1,270 | 1,268 | 1,134 | 1,138 | 1,153 |
| AUDIT | 694 | 779 | 748 | 763 | 780 | 755 | 762 | 741 | 806 | 805 | 817 |
| BKU | 218 | 1,159 | 1,134 | 1,133 | 1,140 | 1,067 | 1,069 | 1,048 | 751 | 760 | 785 |
| TNCJINM | 526 | 567 | 556 | 564 | 616 | 610 | 638 | 642 | 611 | 613 | 629 |
| PALAPES | 470 | 229 | 497 | 526 | 555 | 598 | 661 | 642 | 244 | 582 | 555 |
| DEVEL | 481 | 496 | 482 | 499 | 528 | 549 | 582 | 569 | 502 | 508 | 527 |
| PPUU | 378 | 395 | 384 | 389 | 217 | 380 | 409 | 399 | 387 | 389 | 430 |
| OSH | 264 | 297 | 302 | 309 | 334 | 341 | 362 | 357 | 328 | 318 | 320 |
| BKUPM | 189 | 201 | 191 | 190 | 205 | 194 | 209 | 212 | 210 | 196 | 210 |
| BPP | 62 | 64 | 52 | 51 | 46 | 45 | 54 | 54 | 50 | 52 | 74 |
| PURATA | 4,661 | 4,808 | 4,175 | 4,327 | 4,923 | 5,116 | 5,308 | 5,307 | 5,735 | 6,245 | 6,315 |

JADUAL 3.4: Data Pautan Masuk Pejabat / Jabatan / Bahagian



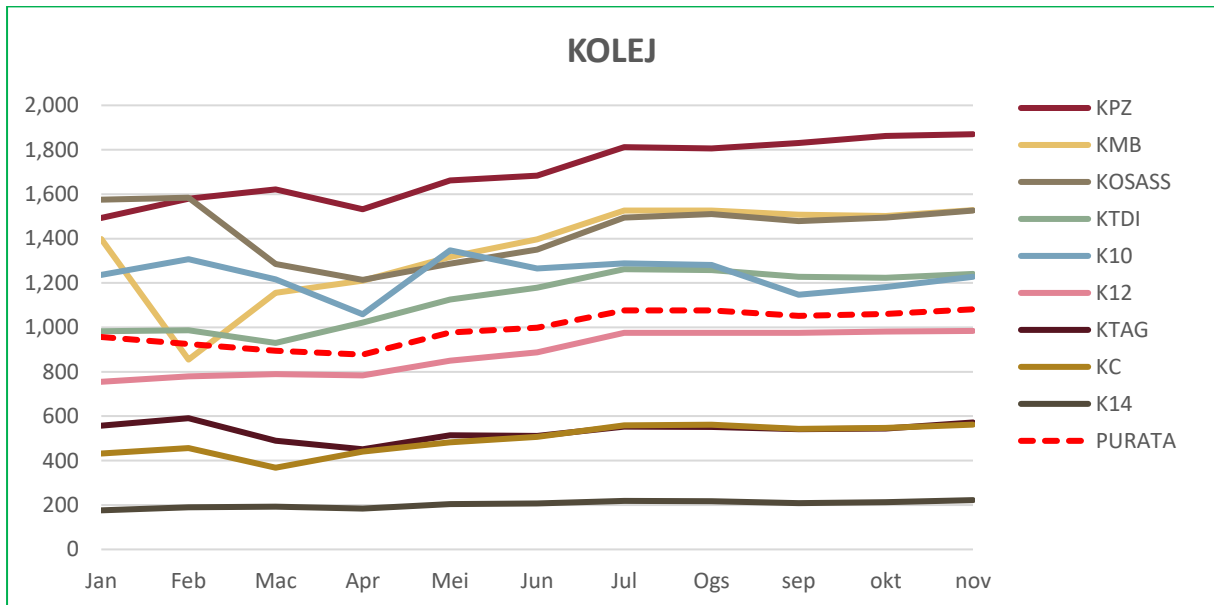
RAJAH 3.4: Data Pautan Masuk Pejabat / Jabatan / Bahagian

DATA PAUTAN MASUK: KOLEJ

■ Tertinggi dalam bulan semasa

| ALAMAT URL | Jan | Feb | Mac | Apr | Mei | Jun | Jul | Ogs | Sep | Okt | Nov |
|------------|-------|-------|-------|-------|-------|-------|-------|-------|-------|-------|-------|
| 1 KPZ | 1,493 | 1,579 | 1,621 | 1,532 | 1,662 | 1,684 | 1,811 | 1,806 | 1,831 | 1,862 | 1,870 |
| 2 KMB | 1,398 | 855 | 1,156 | 1,210 | 1,317 | 1,397 | 1,526 | 1,526 | 1,508 | 1,502 | 1,528 |
| 3 KOSASS | 1,575 | 1,584 | 1,286 | 1,214 | 1,287 | 1,350 | 1,495 | 1,510 | 1,479 | 1,494 | 1,526 |
| 4 KTDI | 982 | 987 | 930 | 1,022 | 1,125 | 1,179 | 1,262 | 1,258 | 1,228 | 1,223 | 1,241 |
| 5 K10 | 1,237 | 1,307 | 1,216 | 1,059 | 1,347 | 1,265 | 1,288 | 1,281 | 1,147 | 1,181 | 1,228 |
| 6 K12 | 755 | 779 | 789 | 784 | 850 | 888 | 975 | 975 | 975 | 981 | 984 |
| 7 KTAG | 558 | 591 | 490 | 451 | 514 | 511 | 553 | 551 | 541 | 545 | 572 |
| 8 KC | 432 | 456 | 368 | 441 | 483 | 507 | 559 | 561 | 543 | 548 | 562 |
| 9 K14 | 176 | 190 | 192 | 184 | 204 | 207 | 219 | 217 | 209 | 213 | 222 |
| PURATA | 956 | 925 | 894 | 877 | 977 | 999 | 1,076 | 1,076 | 1,051 | 1,061 | 1,081 |

JADUAL 3.5: Data Pautan Masuk Kolej



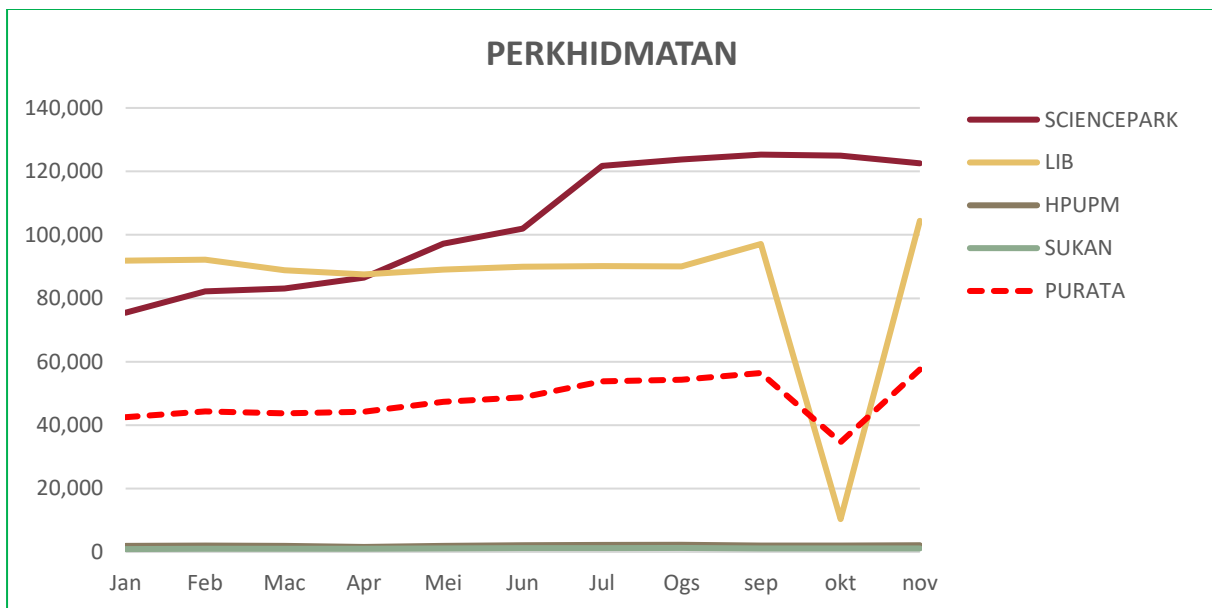
RAJAH 3.5: Data Pautan Masuk Kolej

DATA PAUTAN MASUK: PERKHIDMATAN

■ Tertinggi dalam bulan semasa

| ALAMAT URL | Jan | Feb | Mac | Apr | Mei | Jun | Jul | Ogs | Sep | Okt | Nov |
|---------------|--------|--------|--------|--------|--------|---------|---------|---------|---------|---------|---------|
| 1 SCIENCEPARK | 75,449 | 82,184 | 83,102 | 86,545 | 97,244 | 101,990 | 121,689 | 123,751 | 125,290 | 125,006 | 122,575 |
| 2 LIB | 91,816 | 92,178 | 88,871 | 87,551 | 89,079 | 89,916 | 90,149 | 90,070 | 97,157 | 10,375 | 104,414 |
| 3 HPUPM | 1,897 | 2,007 | 1,928 | 1,595 | 1,949 | 2,107 | 2,272 | 2,278 | 2,059 | 2,048 | 2,092 |
| 4 SUKAN | 927 | 991 | 984 | 1,011 | 1,119 | 1,197 | 1,277 | 1,280 | 1,094 | 1,078 | 1,084 |
| PURATA | 42,522 | 44,340 | 43,721 | 44,176 | 47,348 | 48,803 | 53,847 | 54,345 | 56,400 | 34,627 | 57,541 |

JADUAL 3.6: Data Pautan Masuk Perkhidmatan



RAJAH 3.6: Data Pautan Masuk Perkhidmatan

4.0

DATA LAMAN WEB PTJ: DOMAIN

| | |
|----------------------------|--------|
| | JUMLAH |
| DATA LAMAN WEB UPM: DOMAIN | 52,362 |

MUKA SURAT

| | | |
|-----|-----------------------------------------|----|
| 4.1 | Data DOMAIN: FAKULTI | 17 |
| 4.2 | Data DOMAIN: INSTITUT | 19 |
| 4.3 | Data DOMAIN: PUSAT | 21 |
| 4.4 | Data DOMAIN: PEJABAT/ JABATAN/ BAHAGIAN | 23 |
| 4.5 | Data DOMAIN: KOLEJ | 25 |
| 4.6 | Data DOMAIN: PERKHIDMATAN | 26 |

DEFINISI Jumlah domain luar yang membuat pautan masuk ke laman web PTJ.

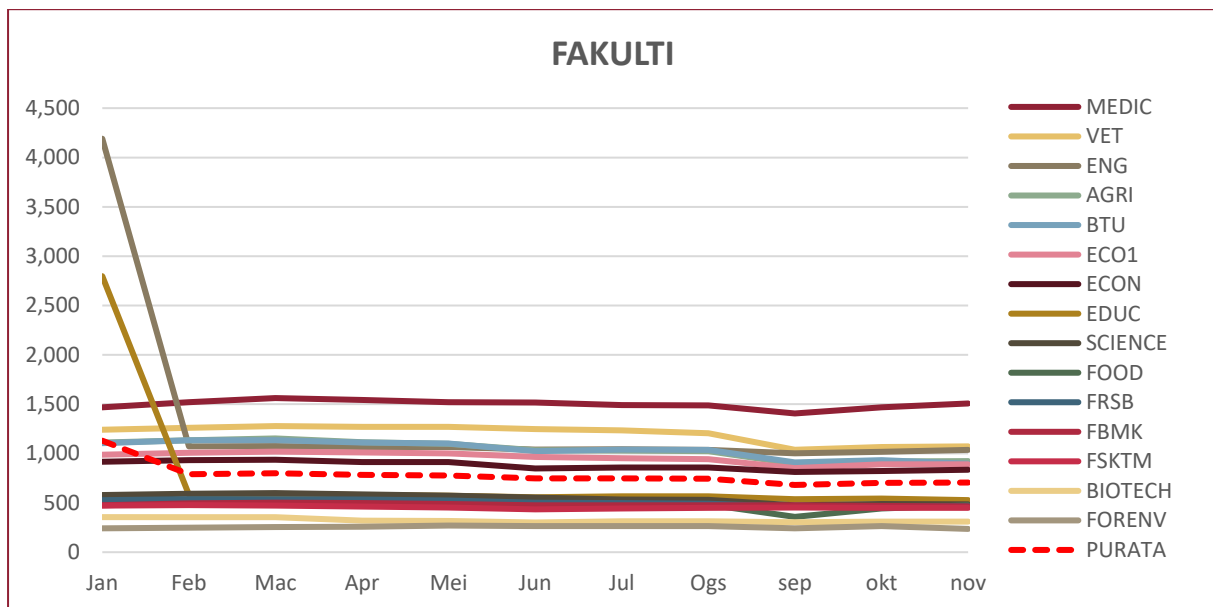
SUMBER DATA <https://www.ahrefs.com>

DATA DOMAIN: FAKULTI

■ Tertinggi dalam bulan semasa

| ALAMAT URL | Jan | Feb | Mac | Apr | Mei | Jun | Jul | Ogs | Sep | Okt | Nov |
|------------|-------|-------|-------|-------|-------|-------|-------|-------|-------|-------|-------|
| 1 MEDIC | 1,467 | 1,519 | 1,562 | 1,542 | 1,521 | 1,516 | 1,492 | 1,487 | 1,406 | 1,467 | 1,508 |
| 2 VET | 1,242 | 1,259 | 1,278 | 1,271 | 1,271 | 1,246 | 1,235 | 1,205 | 1,038 | 1,067 | 1,071 |
| 3 ENG | 4,190 | 1,072 | 1,075 | 1,065 | 1,066 | 1,040 | 1,044 | 1,036 | 1,002 | 1,016 | 1,036 |
| 4 AGRI | 1,111 | 1,135 | 1,153 | 1,114 | 1,097 | 1,034 | 1,030 | 1,023 | 896 | 920 | 923 |
| 5 BTU | 1,106 | 1,134 | 1,135 | 1,111 | 1,103 | 1,023 | 1,040 | 1,038 | 910 | 933 | 897 |
| 6 ECO1 | 989 | 1,009 | 1,019 | 1,010 | 1,000 | 965 | 951 | 943 | 852 | 891 | 891 |
| 7 ECON | 916 | 933 | 937 | 914 | 914 | 849 | 859 | 859 | 813 | 822 | 836 |
| 8 EDUC | 2,797 | 582 | 587 | 579 | 572 | 555 | 566 | 565 | 538 | 543 | 528 |
| 9 SCIENCE | 578 | 591 | 599 | 587 | 574 | 554 | 533 | 529 | 475 | 487 | 485 |
| 10 FOOD | 488 | 509 | 509 | 508 | 506 | 483 | 483 | 483 | 358 | 444 | 477 |
| 11 FRSB | 526 | 536 | 537 | 535 | 524 | 500 | 497 | 491 | 460 | 466 | 468 |
| 12 FBMK | 477 | 494 | 502 | 498 | 488 | 475 | 474 | 475 | 475 | 469 | 465 |
| 13 FSKTM | 472 | 477 | 472 | 464 | 454 | 434 | 443 | 451 | 454 | 451 | 450 |
| 14 BIOTECH | 354 | 355 | 355 | 320 | 317 | 301 | 314 | 314 | 303 | 310 | 311 |
| 15 FORENV | 242 | 250 | 254 | 257 | 270 | 265 | 264 | 264 | 241 | 264 | 236 |
| PURATA | 1,130 | 790 | 798 | 785 | 778 | 749 | 748 | 744 | 681 | 703 | 705 |

JADUAL 4.1 (a): Data Domain Fakulti



RAJAH 4.1: Data Domain Fakulti

UNTUK RUJUKAN

JUMLAH KUMPULAN DOMAIN: FAKULTI

| | ALAMAT URL | GOV | EDU |
|----|------------|-----|-----|
| 1 | MEDIC | 3 | 73 |
| 2 | VET | 0 | 17 |
| 3 | ENG | 2 | 25 |
| 4 | AGRI | 3 | 28 |
| 5 | BTU | 2 | 6 |
| 6 | ECO1 | 0 | 8 |
| 7 | ECON | 1 | 46 |
| 8 | EDUC | 0 | 7 |
| 9 | SCIENCE | 0 | 14 |
| 10 | FOOD | 0 | 4 |
| 11 | FRSB | 1 | 18 |
| 12 | FBMK | 1 | 19 |
| 13 | FSKTM | 0 | 15 |
| 14 | BIOTECH | 0 | 2 |
| 15 | FORENV | 0 | 1 |

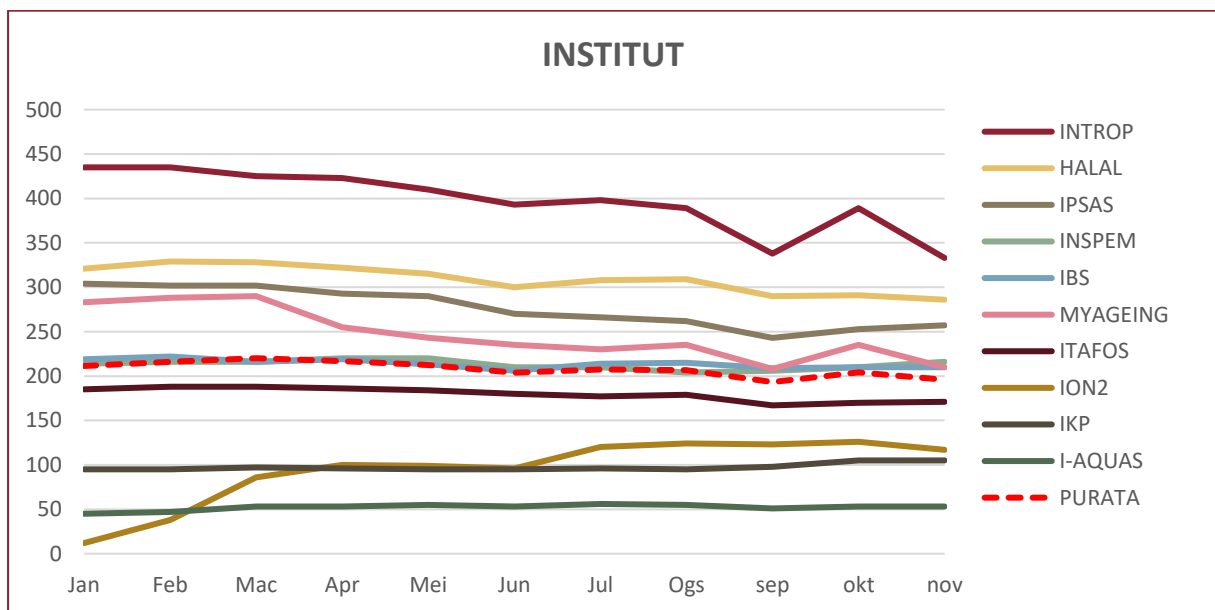
JADUAL 4.1 (b): Data Kumpulan Domain Fakulti

DATA DOMAIN: INSTITUT

■ Tertinggi dalam bulan semasa

| ALAMAT URL | Jan | Feb | Mac | Apr | Mei | Jun | Jul | Ogs | Sep | Okt | Nov |
|------------|-----|-----|-----|-----|-----|-----|-----|-----|-----|-----|-----|
| 1 INTROP | 435 | 435 | 425 | 423 | 410 | 393 | 398 | 389 | 338 | 389 | 333 |
| 2 HALAL | 321 | 329 | 328 | 322 | 315 | 300 | 308 | 309 | 290 | 291 | 286 |
| 3 IPSAS | 304 | 302 | 302 | 293 | 290 | 270 | 266 | 262 | 243 | 253 | 257 |
| 4 INSPEM | 214 | 216 | 216 | 220 | 220 | 210 | 210 | 204 | 206 | 210 | 216 |
| 5 IBS | 219 | 222 | 216 | 219 | 213 | 206 | 214 | 215 | 209 | 210 | 210 |
| 6 MYAGEING | 283 | 288 | 290 | 255 | 243 | 235 | 230 | 235 | 208 | 235 | 210 |
| 7 ITAFOS | 185 | 188 | 188 | 186 | 184 | 180 | 177 | 179 | 167 | 170 | 171 |
| 8 ION2 | 12 | 38 | 86 | 100 | 99 | 96 | 120 | 124 | 123 | 126 | 117 |
| 9 IKP | 95 | 95 | 97 | 96 | 95 | 95 | 96 | 95 | 98 | 105 | 105 |
| 10 I-AQUAS | 45 | 47 | 53 | 53 | 55 | 53 | 56 | 55 | 51 | 53 | 53 |
| PURATA | 211 | 216 | 220 | 217 | 212 | 204 | 208 | 207 | 193 | 204 | 196 |

JADUAL 4.2 (a): Data Domain Institut



RAJAH 4.2: Data Domain Institut

UNTUK RUJUKAN

JUMLAH KUMPULAN DOMAIN: INSTITUT

| | ALAMAT URL | GOV | EDU |
|----|------------|-----|-----|
| 1 | INTROP | 0 | 4 |
| 2 | HALAL | 0 | 4 |
| 3 | IPSAS | 2 | 2 |
| 4 | INSPEM | 0 | 6 |
| 5 | IBS | 0 | 8 |
| 6 | MYAGEING | 1 | 5 |
| 7 | ITAFOS | 0 | 3 |
| 8 | ION2 | 0 | 1 |
| 9 | IKP | 0 | 2 |
| 10 | I-AQUAS | 0 | 1 |

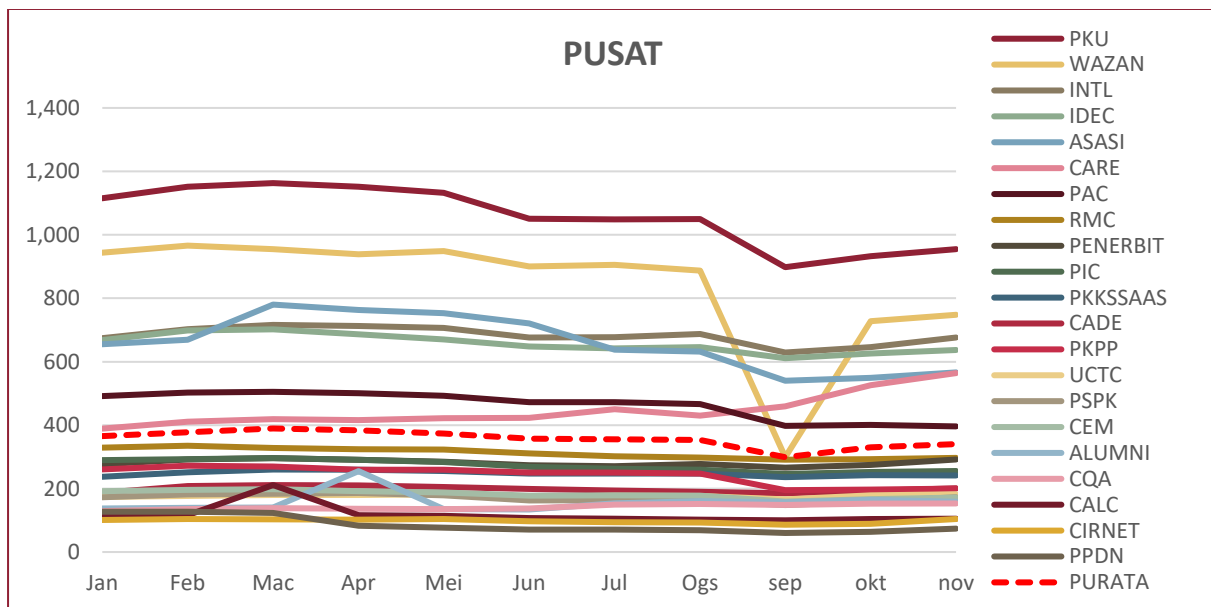
JADUAL 4.2 (b): Data Kumpulan Domain Institut

DATA DOMAIN: PUSAT

■ Tertinggi dalam bulan semasa

| ALAMAT URL | Jan | Feb | Mac | Apr | Mei | Jun | Jul | Ogs | Sep | Okt | Nov |
|-------------|-------|-------|-------|-------|-------|-------|-------|-------|-----|-----|-----|
| 1 PKU | 1,115 | 1,152 | 1,163 | 1,152 | 1,132 | 1,051 | 1,049 | 1,050 | 898 | 933 | 955 |
| 2 WAZAN | 944 | 966 | 955 | 939 | 949 | 900 | 905 | 887 | 299 | 728 | 748 |
| 3 INTL | 674 | 702 | 716 | 713 | 707 | 676 | 677 | 687 | 629 | 646 | 676 |
| 4 IDEC | 668 | 698 | 702 | 686 | 670 | 648 | 642 | 646 | 611 | 626 | 637 |
| 5 ASASI | 655 | 669 | 780 | 763 | 753 | 721 | 638 | 632 | 540 | 549 | 566 |
| 6 CARE | 389 | 411 | 419 | 416 | 422 | 423 | 450 | 430 | 459 | 526 | 564 |
| 7 PAC | 492 | 503 | 505 | 501 | 493 | 472 | 472 | 466 | 398 | 401 | 396 |
| 8 RMC | 329 | 335 | 328 | 324 | 323 | 311 | 302 | 298 | 291 | 293 | 297 |
| 9 PENERBIT | 277 | 292 | 296 | 291 | 285 | 274 | 271 | 278 | 266 | 275 | 292 |
| 10 PIC | 290 | 293 | 296 | 291 | 284 | 268 | 262 | 259 | 246 | 252 | 255 |
| 11 PKKSSAAS | 237 | 251 | 260 | 259 | 255 | 247 | 247 | 247 | 236 | 242 | 241 |
| 12 CADE | 187 | 208 | 211 | 210 | 205 | 199 | 194 | 190 | 185 | 193 | 201 |
| 13 PKPP | 260 | 272 | 270 | 259 | 259 | 250 | 250 | 247 | 195 | 197 | 200 |
| 14 UCTC | 174 | 177 | 180 | 180 | 182 | 174 | 178 | 177 | 166 | 179 | 182 |
| 15 PSPK | 173 | 182 | 184 | 186 | 179 | 163 | 164 | 163 | 148 | 160 | 173 |
| 16 CEM | 192 | 196 | 198 | 192 | 188 | 178 | 179 | 178 | 159 | 167 | 172 |
| 17 ALUMNI | 137 | 139 | 140 | 255 | 135 | 134 | 153 | 161 | 156 | 165 | 158 |
| 18 CQA | 129 | 135 | 138 | 136 | 135 | 137 | 149 | 151 | 148 | 152 | 153 |
| 19 CALC | 118 | 116 | 211 | 116 | 114 | 107 | 105 | 102 | 100 | 104 | 105 |
| 20 CIRNET | 101 | 104 | 103 | 102 | 104 | 97 | 94 | 93 | 86 | 89 | 104 |
| 21 PPDN | 127 | 127 | 123 | 83 | 77 | 71 | 71 | 69 | 60 | 64 | 74 |
| PURATA | 365 | 378 | 389 | 384 | 374 | 357 | 355 | 353 | 299 | 331 | 340 |

JADUAL 4.3 (a): Data Domain Pusat



RAJAH 4.3: Data Domain Pusat

UNTUK RUJUKAN

JUMLAH KUMPULAN DOMAIN: PUSAT

| | ALAMAT URL | GOV | EDU |
|----|------------|-----|-----|
| 1 | PKU | 1 | 2 |
| 2 | WAZAN | 0 | 1 |
| 3 | INTL | 19 | 1 |
| 4 | IDEC | 0 | 3 |
| 5 | ASASI | 0 | 1 |
| 6 | CARE | 0 | 1 |
| 7 | PAC | 0 | 0 |
| 8 | RMC | 1 | 3 |
| 9 | PENERBIT | 0 | 8 |
| 10 | PIC | 0 | 6 |
| 11 | PKKSSAAS | 0 | 0 |
| 12 | CADE | 0 | 9 |
| 13 | PKPP | 0 | 1 |
| 14 | UCTC | 0 | 3 |
| 15 | PSPK | 0 | 0 |
| 16 | CEM | 0 | 3 |
| 17 | ALUMNI | 0 | 3 |
| 18 | CQA | 0 | 0 |
| 19 | CALC | 0 | 0 |
| 20 | CIRNET | 0 | 0 |
| 21 | PPDN | 0 | 0 |

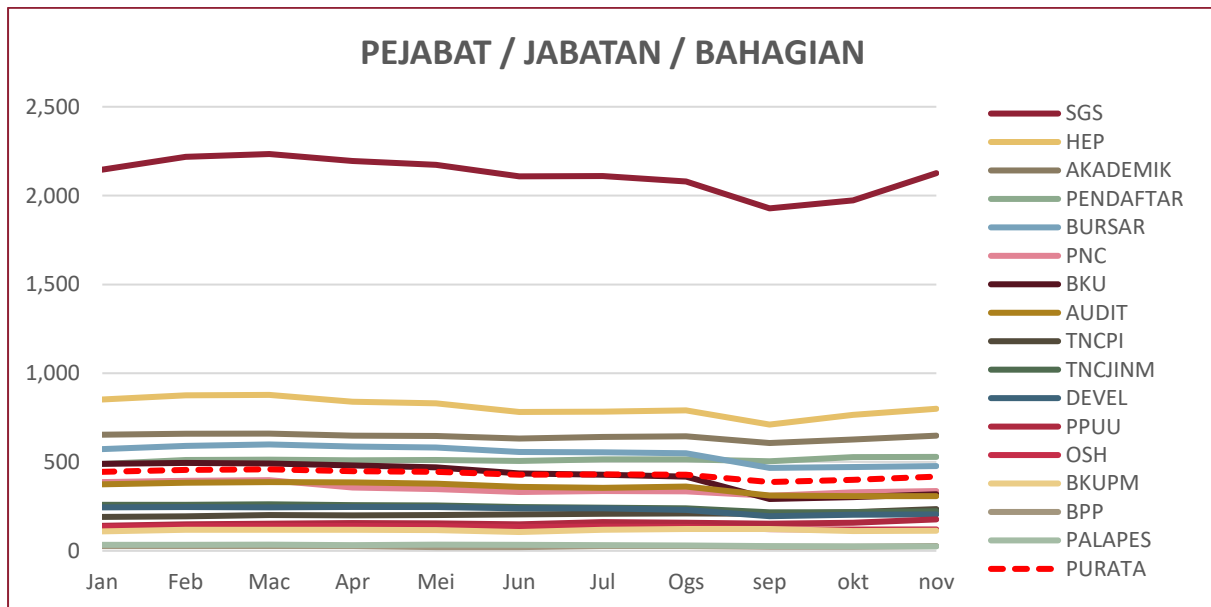
JADUAL 4.3 (b): Data Kumpulan Domain Pusat

DATA DOMAIN: PEJABAT / JABATAN / BAHAGIAN

■ Tertinggi dalam bulan semasa

| ALAMAT URL | Jan | Feb | Mac | Apr | Mei | Jun | Jul | Ogs | Sep | Okt | Nov |
|-------------|-------|-------|-------|-------|-------|-------|-------|-------|-------|-------|-------|
| 1 SGS | 2,146 | 2,219 | 2,234 | 2,195 | 2,174 | 2,109 | 2,110 | 2,079 | 1,928 | 1,973 | 2,126 |
| 2 HEP | 852 | 875 | 878 | 839 | 830 | 782 | 784 | 790 | 711 | 766 | 799 |
| 3 AKADEMIK | 654 | 659 | 660 | 649 | 647 | 633 | 642 | 644 | 607 | 626 | 649 |
| 4 PENDAFTAR | 489 | 512 | 514 | 509 | 512 | 507 | 515 | 515 | 504 | 528 | 529 |
| 5 BURSAR | 573 | 591 | 599 | 587 | 581 | 556 | 555 | 550 | 467 | 471 | 477 |
| 6 PNC | 387 | 395 | 398 | 356 | 347 | 332 | 336 | 334 | 310 | 329 | 337 |
| 7 BKU | 490 | 495 | 491 | 480 | 470 | 436 | 428 | 417 | 292 | 303 | 319 |
| 8 AUDIT | 374 | 384 | 387 | 385 | 379 | 361 | 355 | 362 | 311 | 308 | 308 |
| 9 TNCPI | 191 | 195 | 202 | 200 | 201 | 205 | 209 | 210 | 209 | 218 | 235 |
| 10 TNCJINM | 259 | 260 | 262 | 257 | 256 | 246 | 243 | 240 | 217 | 218 | 224 |
| 11 DEVEL | 245 | 246 | 244 | 247 | 246 | 240 | 240 | 231 | 195 | 204 | 206 |
| 12 PPUU | 141 | 149 | 152 | 157 | 155 | 150 | 162 | 159 | 153 | 159 | 177 |
| 13 OSH | 135 | 140 | 141 | 140 | 139 | 135 | 136 | 135 | 122 | 120 | 121 |
| 14 BKUPM | 110 | 118 | 119 | 118 | 117 | 106 | 119 | 123 | 123 | 111 | 114 |
| 15 BPP | 26 | 26 | 27 | 26 | 21 | 21 | 27 | 27 | 24 | 24 | 27 |
| 16 PALAPES | 34 | 34 | 35 | 32 | 35 | 34 | 33 | 31 | 26 | 25 | 25 |
| PURATA | 444 | 456 | 459 | 449 | 444 | 428 | 431 | 428 | 387 | 399 | 417 |

JADUAL 4.4 (a): Data Domain Pejabat / Jabatan / Bahagian



RAJAH 4.4: Data Domain Pejabat / Jabatan / Bahagian

UNTUK RUJUKAN

JUMLAH KUMPULAN DOMAIN: PEJABAT / JABATAN / BAHAGIAN

| | ALAMAT URL | GOV | EDU |
|----|------------|-----|-----|
| 1 | SGS | 1 | 13 |
| 2 | HEP | 0 | 2 |
| 3 | AKADEMIK | 0 | 3 |
| 4 | PENDAFTAR | 2 | 1 |
| 5 | BURSAR | 0 | 1 |
| 6 | PNC | 0 | 6 |
| 7 | BKU | 0 | 2 |
| 8 | AUDIT | 0 | 3 |
| 9 | TNCPI | 0 | 2 |
| 10 | TNCJINM | 0 | 0 |
| 11 | DEVEL | 0 | 1 |
| 12 | PPUU | 0 | 4 |
| 13 | OSH | 0 | 0 |
| 14 | BKUPM | 0 | 0 |
| 15 | BPP | 0 | 1 |
| 16 | PALAPES | 0 | 0 |

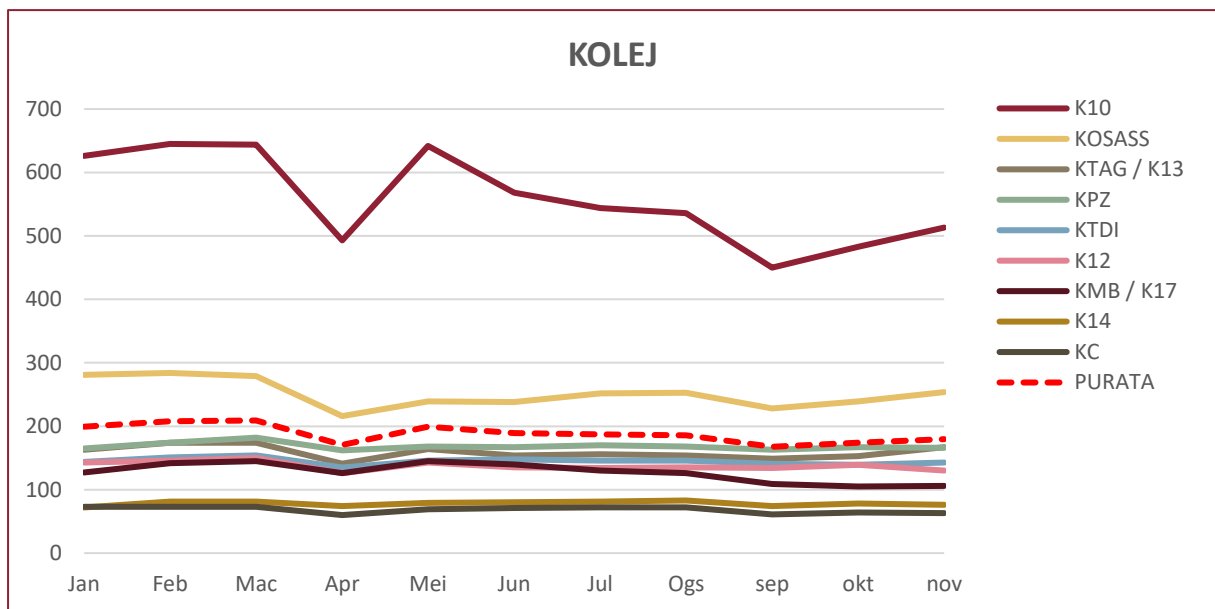
JADUAL 4.4 (b): Data Kumpulan Domain Pejabat / Jabatan / Bahagian

DATA DOMAIN: KOLEJ

■ Tertinggi dalam bulan semasa

| ALAMAT URL | Jan | Feb | Mac | Apr | Mei | Jun | Jul | Ogs | Sep | Okt | Nov |
|------------|-----|-----|-----|-----|-----|-----|-----|-----|-----|-----|-----|
| K10 | 626 | 645 | 644 | 493 | 642 | 568 | 544 | 536 | 450 | 483 | 513 |
| KOSASS | 281 | 284 | 279 | 216 | 239 | 238 | 252 | 253 | 228 | 239 | 254 |
| KTAG | 163 | 174 | 174 | 141 | 164 | 154 | 156 | 154 | 149 | 153 | 167 |
| KPZ | 165 | 174 | 182 | 162 | 168 | 167 | 170 | 168 | 163 | 167 | 166 |
| KTDI | 144 | 151 | 154 | 135 | 146 | 148 | 146 | 146 | 141 | 139 | 143 |
| K12 | 143 | 146 | 150 | 126 | 143 | 135 | 134 | 135 | 134 | 139 | 130 |
| KMB | 127 | 142 | 145 | 126 | 145 | 140 | 130 | 126 | 109 | 105 | 106 |
| K14 | 72 | 81 | 81 | 74 | 79 | 80 | 81 | 83 | 74 | 78 | 76 |
| KC | 73 | 73 | 73 | 60 | 69 | 71 | 72 | 72 | 61 | 64 | 63 |
| PURATA | 199 | 208 | 209 | 170 | 199 | 189 | 187 | 186 | 168 | 174 | 180 |

JADUAL 4.5 (a): Data Domain Kolej



RAJAH 4.5: Data Domain Kolej

UNTUK RUJUKAN

JUMLAH KUMPULAN DOMAIN: KOLEJ

| ALAMAT URL | GOV | EDU |
|------------|-----|-----|
| K10 | 0 | 1 |
| KOSASS | 0 | 1 |
| KTAG | 0 | 0 |
| KPZ | 0 | 0 |
| KTDI | 0 | 0 |
| K12 | 0 | 1 |
| KMB | 0 | 0 |
| K14 | 0 | 0 |
| KC | 0 | 1 |

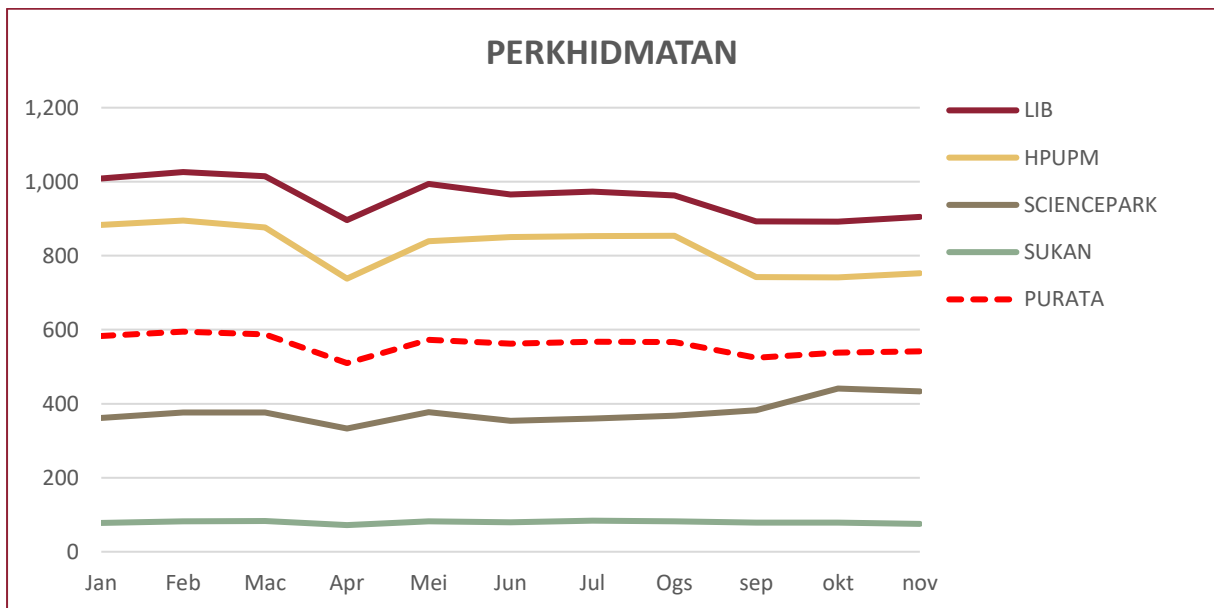
JADUAL 4.5 (b): Data Kumpulan Domain Kolej

DATA DOMAIN: PERKHIDMATAN

■ Tertinggi dalam bulan semasa

| ALAMAT URL | Jan | Feb | Mac | Apr | Mei | Jun | Jul | Ogs | Sep | Okt | Nov |
|---------------|-------|-------|-------|-----|-----|-----|-----|-----|-----|-----|-----|
| 1 LIB | 1,009 | 1,026 | 1,015 | 896 | 994 | 965 | 973 | 963 | 893 | 892 | 905 |
| 2 HPUPM | 883 | 895 | 876 | 738 | 839 | 850 | 853 | 854 | 742 | 741 | 753 |
| 3 SCIENCEPARK | 362 | 376 | 376 | 333 | 377 | 354 | 360 | 368 | 382 | 441 | 433 |
| 4 SUKAN | 78 | 82 | 83 | 72 | 82 | 80 | 84 | 82 | 79 | 79 | 75 |
| PURATA | 583 | 595 | 588 | 510 | 573 | 562 | 568 | 567 | 524 | 538 | 542 |

JADUAL 4.6 (a): Data Domain Perkhidmatan



RAJAH 4.6: Data Domain Perkhidmatan

UNTUK RUJUKAN

JUMLAH KUMPULAN DOMAIN: PERKHIDMATAN

| ALAMAT URL | GOV | EDU |
|---------------|-----|-----|
| 1 LIB | 5 | 49 |
| 2 HPUPM | 0 | 2 |
| 3 SCIENCEPARK | 1 | 24 |
| 4 SUKAN | 0 | 0 |

JADUAL 4.6 (b): Data Kumpulan Domain Perkhidmatan

5.0

DATA LAMAN WEB PTJ: ARTIKEL & BERITA

| | JUMLAH |
|-----------------------------|--------|
| DATA LAMAN WEB UPM: ARTIKEL | 172 |
| DATA LAMAN WEB UPM: BERITA | 3,804 |

| | | MUKA SURAT |
|-----|-----------------------------------------------------|------------|
| 5.1 | Data ARTIKEL & BERITA: FAKULTI | 28 |
| 5.2 | Data ARTIKEL & BERITA: INSTITUT | 29 |
| 5.3 | Data ARTIKEL & BERITA: PUSAT | 30 |
| 5.4 | Data ARTIKEL & BERITA: PEJABAT / JABATAN / BAHAGIAN | 31 |
| 5.5 | Data ARTIKEL & BERITA: KOLEJ | 32 |
| 5.6 | Data ARTIKEL & BERITA: PERKHIDMATAN | 33 |

DEFINISI JUMLAH artikel dan berita yang dihasilkan dan dipaparkan di laman web PTJ.

SUMBER DATA <https://www.upm.edu.my/info4web>

DATA ARTIKEL & BERITA: FAKULTI

■ Tertinggi dalam bulan semasa

ARTIKEL

| | ALAMAT URL | Jan | Feb | Mac | Apr | Mei | Jun | Jul | Ogs | Sep | Okt | Nov |
|----|------------|-----|-----|-----|-----|-----|-----|-----|-----|-----|-----|-----|
| 1 | BTU | 402 | 406 | 416 | 422 | 428 | 436 | 450 | 458 | 482 | 482 | 500 |
| 2 | ECO1 | 286 | 286 | 286 | 286 | 286 | 286 | 286 | 286 | 286 | 286 | 288 |
| 3 | ECON | 88 | 90 | 130 | 140 | 140 | 120 | 124 | 124 | 124 | 124 | 124 |
| 4 | AGRI | 78 | 80 | 84 | 84 | 84 | 84 | 84 | 84 | 86 | 86 | 86 |
| 5 | FBMK | 56 | 56 | 58 | 60 | 60 | 64 | 66 | 76 | 78 | 78 | 78 |
| 6 | FORENV | 4 | 4 | 4 | 4 | 4 | 4 | 30 | 42 | 52 | 58 | 70 |
| 7 | FRSB | 44 | 46 | 46 | 46 | 52 | 58 | 58 | 60 | 62 | 64 | 66 |
| 8 | EDUC | 46 | 46 | 46 | 46 | 46 | 46 | 48 | 48 | 48 | 56 | 56 |
| 9 | ENG | 42 | 42 | 42 | 44 | 44 | 46 | 46 | 54 | 54 | 54 | 56 |
| 10 | FSKTM | 38 | 42 | 44 | 46 | 46 | 50 | 52 | 56 | 56 | 56 | 56 |
| 11 | MEDIC | 38 | 38 | 38 | 42 | 46 | 46 | 46 | 48 | 48 | 48 | 48 |
| 12 | FOOD | 36 | 36 | 36 | 40 | 42 | 42 | 42 | 42 | 42 | 42 | 42 |
| 13 | VET | 14 | 14 | 18 | 20 | 24 | 28 | 30 | 30 | 30 | 32 | 32 |
| 14 | SCIENCE | 16 | 16 | 18 | 18 | 18 | 18 | 20 | 22 | 26 | 26 | 26 |
| 15 | BIOTECH | 22 | 22 | 22 | 22 | 22 | 22 | 24 | 24 | 24 | 24 | 24 |
| | PURATA | 81 | 82 | 86 | 88 | 89 | 90 | 94 | 97 | 100 | 101 | 103 |

JADUAL 5.1 (a): Jumlah Artikel Fakulti

BERITA

| | ALAMAT URL | Jan | Feb | Mac | Apr | Mei | Jun | Jul | Ogs | Sep | Okt | Nov |
|----|------------|-----|-----|-----|-----|-----|-----|-----|-------|-------|-------|-------|
| 1 | BTU | 854 | 870 | 902 | 920 | 932 | 962 | 994 | 1,050 | 1,104 | 1,134 | 1,230 |
| 2 | ECO1 | 484 | 484 | 484 | 484 | 486 | 486 | 510 | 516 | 522 | 522 | 530 |
| 3 | ENG | 398 | 398 | 400 | 404 | 408 | 414 | 416 | 422 | 434 | 440 | 446 |
| 4 | VET | 374 | 378 | 384 | 398 | 404 | 416 | 422 | 430 | 430 | 430 | 432 |
| 5 | MEDIC | 324 | 324 | 330 | 336 | 340 | 344 | 346 | 346 | 346 | 348 | 348 |
| 6 | SCIENCE | 250 | 250 | 258 | 260 | 260 | 258 | 264 | 270 | 274 | 274 | 278 |
| 7 | BIOTECH | 232 | 232 | 238 | 238 | 238 | 238 | 240 | 240 | 240 | 248 | 248 |
| 8 | AGRI | 204 | 212 | 218 | 220 | 220 | 220 | 220 | 220 | 222 | 222 | 224 |
| 9 | FBMK | 166 | 166 | 168 | 176 | 184 | 188 | 204 | 218 | 222 | 222 | 222 |
| 10 | ECON | 134 | 136 | 174 | 176 | 176 | 188 | 196 | 198 | 204 | 206 | 210 |
| 11 | FORENV | 108 | 118 | 120 | 124 | 124 | 128 | 142 | 160 | 172 | 180 | 184 |
| 12 | EDUC | 158 | 160 | 160 | 162 | 162 | 164 | 170 | 170 | 170 | 174 | 174 |
| 13 | FSKTM | 134 | 136 | 140 | 148 | 150 | 152 | 154 | 156 | 158 | 160 | 160 |
| 14 | FRSB | 116 | 118 | 120 | 120 | 132 | 138 | 138 | 146 | 154 | 154 | 154 |
| 15 | FOOD | 118 | 118 | 118 | 124 | 124 | 126 | 130 | 130 | 130 | 130 | 130 |
| | PURATA | 270 | 273 | 281 | 286 | 289 | 295 | 303 | 311 | 319 | 323 | 331 |

JADUAL 5.1 (b): Jumlah Berita Fakulti

DATA ARTIKEL & BERITA: INSTITUT

■ Tertinggi dalam bulan semasa

ARTIKEL

| | ALAMAT URL | Jan | Feb | Mac | Apr | Mei | Jun | Jul | Ogs | Sep | Okt | Nov |
|----|------------|-----|-----|-----|-----|-----|-----|-----|-----|-----|-----|-----|
| 1 | IPSAS | 86 | 86 | 90 | 92 | 92 | 98 | 106 | 114 | 120 | 126 | 130 |
| 2 | I-AQUAS | 84 | 88 | 88 | 100 | 106 | 112 | 114 | 114 | 118 | 118 | 122 |
| 3 | INTROP | 88 | 88 | 88 | 88 | 88 | 88 | 88 | 88 | 88 | 100 | 100 |
| 4 | ION2 | 52 | 70 | 74 | 74 | 74 | 82 | 86 | 92 | 94 | 98 | 98 |
| 5 | IBS | 28 | 28 | 30 | 30 | 30 | 30 | 30 | 30 | 42 | 44 | 46 |
| 6 | IKP | 16 | 16 | 16 | 18 | 18 | 18 | 22 | 26 | 30 | 32 | 42 |
| 7 | MYAGEING | 16 | 18 | 18 | 18 | 18 | 24 | 28 | 28 | 28 | 30 | 40 |
| 8 | INSPEM | 34 | 34 | 34 | 34 | 34 | 34 | 34 | 34 | 34 | 34 | 34 |
| 9 | ITAFOS | 26 | 26 | 26 | 26 | 26 | 28 | 30 | 30 | 32 | 32 | 34 |
| 10 | HALAL | 24 | 24 | 24 | 24 | 24 | 24 | 24 | 24 | 24 | 24 | 24 |
| | PURATA | 45 | 48 | 49 | 50 | 51 | 54 | 56 | 58 | 61 | 64 | 67 |

JADUAL 5.2 (a): Jumlah Artikel Institut

BERITA

| | ALAMAT URL | Jan | Feb | Mac | Apr | Mei | Jun | Jul | Ogs | Sep | Okt | Nov |
|----|------------|-----|-----|-----|-----|-----|-----|-----|-----|-----|-----|-----|
| 1 | IBS | 274 | 274 | 274 | 290 | 294 | 294 | 296 | 296 | 304 | 304 | 310 |
| 2 | ION2 | 212 | 216 | 218 | 222 | 222 | 226 | 234 | 240 | 242 | 256 | 258 |
| 3 | IKP | 132 | 132 | 146 | 156 | 162 | 174 | 180 | 192 | 198 | 206 | 212 |
| 4 | INSPEM | 190 | 194 | 194 | 196 | 202 | 202 | 204 | 204 | 204 | 206 | 206 |
| 5 | IPSAS | 124 | 132 | 132 | 138 | 142 | 144 | 150 | 158 | 160 | 162 | 166 |
| 6 | INTROP | 120 | 120 | 120 | 120 | 122 | 126 | 126 | 128 | 128 | 154 | 154 |
| 7 | MYAGEING | 72 | 90 | 98 | 110 | 112 | 124 | 134 | 140 | 144 | 150 | 154 |
| 8 | ITAFOS | 102 | 102 | 110 | 110 | 110 | 116 | 118 | 118 | 124 | 128 | 130 |
| 9 | HALAL | 58 | 58 | 58 | 58 | 58 | 58 | 58 | 60 | 62 | 62 | 62 |
| 10 | I-AQUAS | 34 | 34 | 34 | 34 | 34 | 34 | 34 | 34 | 36 | 36 | 36 |
| | PURATA | 132 | 135 | 138 | 143 | 146 | 150 | 153 | 157 | 160 | 166 | 169 |

JADUAL 5.2 (b): Jumlah Berita Institut

DATA ARTIKEL & BERITA: PUSAT

■ Tertinggi dalam bulan semasa

ARTIKEL

| ALAMAT URL | Jan | Feb | Mac | Apr | Mei | Jun | Jul | Ogs | Sep | Okt | Nov |
|-------------|-----|-----|-----|-----|-----|-----|-----|-----|-----|-----|-----|
| 1 WAZAN | 178 | 192 | 200 | 218 | 222 | 230 | 246 | 246 | 258 | 262 | 268 |
| 2 PIC | 72 | 94 | 124 | 134 | 138 | 156 | 184 | 208 | 218 | 228 | 240 |
| 3 RMC | 184 | 190 | 194 | 198 | 200 | 204 | 206 | 208 | 210 | 210 | 216 |
| 4 INTL | 146 | 148 | 148 | 152 | 152 | 160 | 160 | 164 | 170 | 176 | 180 |
| 5 PKPP | 178 | 178 | 178 | 178 | 178 | 178 | 178 | 178 | 178 | 178 | 178 |
| 6 IDEC | 118 | 118 | 120 | 120 | 120 | 120 | 132 | 136 | 142 | 142 | 144 |
| 7 ALUMNI | 102 | 102 | 102 | 104 | 106 | 118 | 120 | 128 | 136 | 136 | 138 |
| 8 CARE | 98 | 98 | 100 | 102 | 102 | 104 | 96 | 100 | 106 | 112 | 118 |
| 9 PKKSSAAS | 44 | 44 | 44 | 44 | 78 | 116 | 116 | 116 | 116 | 116 | 116 |
| 10 PKU | 92 | 92 | 96 | 100 | 104 | 104 | 106 | 106 | 108 | 108 | 108 |
| 11 ASASI | 54 | 60 | 64 | 66 | 68 | 74 | 82 | 82 | 86 | 92 | 98 |
| 12 CQA | 30 | 32 | 32 | 34 | 34 | 34 | 34 | 38 | 40 | 54 | 54 |
| 13 CEM | 46 | 46 | 46 | 46 | 46 | 46 | 48 | 52 | 52 | 52 | 52 |
| 14 CIRNET | 38 | 50 | 50 | 50 | 50 | 50 | 50 | 50 | 50 | 50 | 50 |
| 15 PAC | 42 | 42 | 44 | 44 | 44 | 44 | 44 | 46 | 46 | 48 | 48 |
| 16 PSPK | 28 | 28 | 44 | 44 | 44 | 44 | 46 | 46 | 46 | 46 | 46 |
| 17 UCTC | 32 | 38 | 40 | 40 | 42 | 42 | 44 | 44 | 44 | 44 | 44 |
| 18 PENERBIT | 22 | 22 | 22 | 22 | 22 | 22 | 22 | 28 | 30 | 32 | 34 |
| 19 CALC | 18 | 18 | 18 | 18 | 18 | 18 | 18 | 18 | 18 | 18 | 18 |
| 20 PPDN | 14 | 14 | 14 | 14 | 14 | 14 | 14 | 14 | 14 | 14 | 14 |
| 21 CADE | 0 | 2 | 2 | 2 | 2 | 2 | 8 | 12 | 12 | 12 | 12 |
| PURATA | 73 | 77 | 80 | 82 | 85 | 90 | 93 | 96 | 99 | 101 | 104 |

JADUAL 5.3 (a): Jumlah Artikel Pusat

BERITA

| ALAMAT URL | Jan | Feb | Mac | Apr | Mei | Jun | Jul | Ogs | Sep | Okt | Nov |
|-------------|-----|-----|-----|-----|-----|-----|-----|-----|-----|-----|-----|
| 1 ALUMNI | 342 | 348 | 394 | 436 | 454 | 494 | 528 | 568 | 592 | 620 | 658 |
| 2 WAZAN | 492 | 502 | 524 | 540 | 544 | 562 | 572 | 582 | 554 | 556 | 574 |
| 3 CIRNET | 132 | 342 | 342 | 342 | 342 | 392 | 392 | 392 | 392 | 392 | 392 |
| 4 IDEC | 338 | 344 | 344 | 344 | 344 | 348 | 356 | 366 | 368 | 374 | 380 |
| 5 UCTC | 248 | 260 | 286 | 300 | 312 | 308 | 336 | 336 | 332 | 344 | 350 |
| 6 ASASI | 240 | 244 | 256 | 264 | 264 | 264 | 264 | 280 | 290 | 298 | 304 |
| 7 PIC | 92 | 114 | 136 | 146 | 146 | 162 | 174 | 190 | 196 | 202 | 212 |
| 8 PKU | 182 | 184 | 186 | 188 | 188 | 196 | 196 | 196 | 204 | 204 | 204 |
| 9 PKPP | 200 | 200 | 200 | 200 | 200 | 190 | 190 | 192 | 192 | 194 | 196 |
| 10 CALC | 140 | 142 | 146 | 148 | 150 | 156 | 156 | 168 | 172 | 174 | 178 |
| 11 RMC | 156 | 156 | 156 | 156 | 156 | 154 | 154 | 154 | 154 | 154 | 154 |
| 12 PAC | 142 | 142 | 142 | 142 | 142 | 142 | 142 | 146 | 146 | 152 | 152 |
| 13 CEM | 104 | 108 | 114 | 120 | 122 | 124 | 130 | 144 | 146 | 150 | 150 |
| 14 PENERBIT | 120 | 120 | 122 | 122 | 122 | 122 | 122 | 126 | 134 | 142 | 150 |
| 15 CARE | 104 | 104 | 106 | 106 | 106 | 108 | 110 | 116 | 122 | 126 | 128 |
| 16 CQA | 92 | 92 | 92 | 92 | 94 | 96 | 100 | 106 | 112 | 112 | 118 |
| 17 PSPK | 98 | 98 | 100 | 102 | 102 | 102 | 106 | 110 | 110 | 110 | 110 |
| 18 INTL | 6 | 8 | 10 | 10 | 14 | 18 | 28 | 50 | 60 | 68 | 76 |
| 19 CADE | 50 | 50 | 58 | 60 | 60 | 60 | 64 | 66 | 66 | 72 | 72 |
| 20 PKKSSAAS | 244 | 244 | 248 | 258 | 258 | 262 | 264 | 264 | 48 | 48 | 48 |
| 21 PPDN | 14 | 14 | 14 | 16 | 16 | 22 | 24 | 26 | 28 | 32 | 34 |
| PURATA | 168 | 182 | 189 | 195 | 197 | 204 | 210 | 218 | 210 | 215 | 221 |

JADUAL 5.3 (b): Jumlah Berita Pusat

DATA ARTIKEL & BERITA: PEJABAT / JABATAN / BAHAGIAN

■ Tertinggi dalam bulan semasa

ARTIKEL

| ALAMAT URL | Jan | Feb | Mac | Apr | Mei | Jun | Jul | Ogs | Sep | Okt | Nov |
|------------|-----|-----|-----|-----|-----|-----|-----|-----|-----|-----|-----|
| HEP | 164 | 172 | 174 | 186 | 194 | 200 | 204 | 204 | 204 | 204 | 204 |
| AUDIT | 146 | 152 | 154 | 164 | 170 | 166 | 166 | 172 | 174 | 180 | 180 |
| SGS | 110 | 116 | 116 | 116 | 116 | 136 | 144 | 148 | 158 | 166 | 174 |
| BKUPM | 84 | 86 | 88 | 88 | 88 | 92 | 106 | 120 | 144 | 154 | 164 |
| BURSAR | 54 | 54 | 54 | 54 | 54 | 54 | 54 | 62 | 70 | 72 | 78 |
| PNC | 74 | 74 | 74 | 74 | 74 | 72 | 74 | 74 | 74 | 74 | 74 |
| PENDAFTAR | 52 | 52 | 52 | 54 | 54 | 54 | 58 | 62 | 62 | 64 | 66 |
| TNCPI | 54 | 56 | 56 | 56 | 56 | 56 | 58 | 60 | 60 | 60 | 60 |
| TNCJINM | 38 | 38 | 38 | 38 | 38 | 38 | 38 | 38 | 38 | 48 | 48 |
| BKU | 34 | 34 | 34 | 34 | 34 | 34 | 40 | 40 | 46 | 46 | 46 |
| OSH | 20 | 20 | 20 | 20 | 20 | 20 | 20 | 20 | 20 | 22 | 22 |
| AKADEMIK | 14 | 14 | 14 | 14 | 14 | 14 | 14 | 14 | 16 | 16 | 16 |
| DEVEL | 12 | 12 | 12 | 12 | 12 | 12 | 12 | 12 | 12 | 12 | 12 |
| BPP | 6 | 8 | 8 | 8 | 8 | 8 | 8 | 8 | 8 | 8 | 8 |
| PPUU | 8 | 8 | 8 | 8 | 8 | 8 | 8 | 8 | 8 | 8 | 8 |
| PALAPES | 0 | 0 | 0 | 0 | 6 | 6 | 6 | 6 | 6 | 6 | 6 |
| PURATA | 54 | 56 | 56 | 58 | 59 | 61 | 63 | 66 | 69 | 71 | 73 |

JADUAL 5.4 (a): Jumlah Artikel Pejabat / Jabatan / Bahagian

BERITA

| ALAMAT URL | Jan | Feb | Mac | Apr | Mei | Jun | Jul | Ogs | Sep | Okt | Nov |
|------------|-----|-----|-----|-----|-----|-----|-----|-----|-----|-----|-----|
| HEP | 362 | 378 | 392 | 420 | 432 | 464 | 482 | 490 | 512 | 520 | 542 |
| SGS | 384 | 392 | 400 | 410 | 414 | 422 | 432 | 440 | 448 | 460 | 468 |
| PENDAFTAR | 234 | 242 | 242 | 248 | 250 | 294 | 300 | 310 | 322 | 324 | 326 |
| PNC | 238 | 238 | 238 | 238 | 238 | 238 | 242 | 242 | 244 | 244 | 244 |
| AUDIT | 180 | 184 | 188 | 192 | 194 | 200 | 206 | 214 | 218 | 226 | 226 |
| AKADEMIK | 98 | 98 | 98 | 98 | 98 | 104 | 104 | 116 | 124 | 132 | 132 |
| TNCJINM | 100 | 100 | 100 | 100 | 104 | 104 | 104 | 104 | 104 | 118 | 118 |
| BKU | 82 | 82 | 84 | 84 | 84 | 84 | 92 | 94 | 104 | 104 | 116 |
| BURSAR | 60 | 64 | 66 | 68 | 68 | 72 | 76 | 82 | 88 | 92 | 94 |
| BKUPM | 56 | 58 | 58 | 60 | 60 | 62 | 66 | 74 | 86 | 88 | 92 |
| DEVEL | 92 | 92 | 92 | 92 | 92 | 92 | 92 | 92 | 92 | 92 | 92 |
| TNCPI | 82 | 82 | 86 | 86 | 86 | 86 | 88 | 92 | 92 | 92 | 92 |
| OSH | 36 | 36 | 36 | 36 | 36 | 38 | 44 | 44 | 48 | 50 | 52 |
| BPP | 14 | 14 | 14 | 14 | 14 | 14 | 14 | 14 | 14 | 14 | 14 |
| PALAPES | 2 | 2 | 2 | 2 | 10 | 14 | 14 | 14 | 14 | 14 | 14 |
| PPUU | 2 | 2 | 2 | 2 | 2 | 2 | 2 | 2 | 2 | 2 | 2 |
| PURATA | 126 | 129 | 131 | 134 | 136 | 143 | 147 | 152 | 157 | 161 | 164 |

JADUAL 5.4 (b): Jumlah Berita Pejabat / Jabatan / Bahagian

DATA ARTIKEL & BERITA: KOLEJ

■ Tertinggi dalam bulan semasa

ARTIKEL

| | ALAMAT URL | Jan | Feb | Mac | Apr | Mei | Jun | Jul | Ogs | Sep | Okt | Nov |
|---|------------|-----|-----|-----|-----|-----|-----|-----|-----|-----|-----|-----|
| 1 | KOSASS | 78 | 78 | 78 | 78 | 78 | 78 | 84 | 86 | 94 | 96 | 102 |
| 2 | KTAG | 14 | 14 | 14 | 14 | 14 | 14 | 14 | 14 | 74 | 82 | 82 |
| 3 | K10 | 72 | 72 | 72 | 72 | 72 | 72 | 72 | 72 | 72 | 72 | 72 |
| 4 | K12 | 24 | 26 | 26 | 26 | 26 | 26 | 26 | 28 | 42 | 42 | 42 |
| 5 | KC | 24 | 24 | 24 | 24 | 24 | 64 | 68 | 72 | 24 | 24 | 24 |
| 6 | KTDI | 14 | 14 | 14 | 14 | 14 | 16 | 16 | 16 | 16 | 16 | 16 |
| 7 | KMB | 24 | 36 | 46 | 52 | 54 | 24 | 24 | 24 | 14 | 14 | 14 |
| 8 | K14 | 6 | 6 | 6 | 6 | 6 | 6 | 6 | 6 | 6 | 6 | 6 |
| 9 | KPZ | 34 | 34 | 34 | 34 | 34 | 34 | 34 | 34 | 6 | 6 | 6 |
| | PURATA | 32 | 34 | 35 | 36 | 36 | 37 | 38 | 39 | 39 | 40 | 40 |

JADUAL 5.5 (a): Jumlah Artikel Kolej

BERITA

| | ALAMAT URL | Jan | Feb | Mac | Apr | Mei | Jun | Jul | Ogs | Sep | Okt | Nov |
|---|------------|-----|-----|-----|-----|-----|-----|-----|-----|-----|-----|-----|
| 1 | K10 | 322 | 328 | 332 | 342 | 344 | 346 | 346 | 346 | 348 | 354 | 370 |
| 2 | K12 | 222 | 228 | 228 | 228 | 228 | 228 | 240 | 244 | 254 | 258 | 258 |
| 3 | KTDI | 108 | 126 | 128 | 140 | 140 | 162 | 168 | 174 | 174 | 180 | 190 |
| 4 | K14 | 162 | 164 | 164 | 164 | 164 | 164 | 170 | 170 | 170 | 170 | 170 |
| 5 | KOSASS | 146 | 148 | 148 | 148 | 148 | 152 | 158 | 158 | 162 | 166 | 170 |
| 6 | KTAG | 74 | 76 | 76 | 76 | 76 | 76 | 76 | 78 | 118 | 134 | 144 |
| 7 | KMB | 72 | 80 | 86 | 92 | 98 | 32 | 32 | 32 | 78 | 78 | 78 |
| 8 | KPZ | 54 | 54 | 54 | 54 | 54 | 56 | 58 | 58 | 50 | 50 | 50 |
| 9 | KC | 32 | 32 | 32 | 32 | 32 | 104 | 112 | 118 | 32 | 32 | 32 |
| | PURATA | 132 | 137 | 139 | 142 | 143 | 147 | 151 | 153 | 154 | 158 | 162 |

JADUAL 5.5 (b): Jumlah Berita Kolej

DATA ARTIKEL & BERITA: PERKHIDMATAN

■ Tertinggi dalam bulan semasa

ARTIKEL

| ALAMAT URL | Jan | Feb | Mac | Apr | Mei | Jun | Jul | Ogs | Sep | Okt | Nov |
|---------------|-----|-----|-----|-----|-----|-----|-----|-----|-----|-----|-----|
| 1 SCIENCEPARK | 242 | 256 | 262 | 268 | 274 | 274 | 292 | 302 | 310 | 312 | 312 |
| 2 HPUPM | 194 | 196 | 196 | 198 | 198 | 202 | 204 | 222 | 222 | 222 | 226 |
| 3 LIB | 70 | 76 | 76 | 76 | 76 | 76 | 76 | 80 | 80 | 80 | 80 |
| 4 SUKAN | 14 | 14 | 14 | 14 | 14 | 14 | 14 | 14 | 8 | 12 | 12 |
| PURATA | 130 | 136 | 137 | 139 | 141 | 142 | 147 | 155 | 155 | 157 | 158 |

JADUAL 5.6 (a): Jumlah Artikel Perkhidmatan

BERITA

| ALAMAT URL | Jan | Feb | Mac | Apr | Mei | Jun | Jul | Ogs | Sep | Okt | Nov |
|---------------|-----|-----|-----|-----|-----|-----|-----|-----|-----|-----|-----|
| 1 SCIENCEPARK | 288 | 290 | 300 | 308 | 314 | 318 | 340 | 356 | 364 | 372 | 376 |
| 2 LIB | 230 | 232 | 240 | 246 | 246 | 252 | 264 | 270 | 268 | 278 | 284 |
| 3 HPUPM | 120 | 120 | 132 | 140 | 140 | 140 | 144 | 146 | 174 | 178 | 186 |
| 4 SUKAN | 48 | 48 | 48 | 48 | 48 | 48 | 48 | 50 | 18 | 24 | 28 |
| PURATA | 172 | 173 | 180 | 186 | 187 | 190 | 199 | 206 | 206 | 213 | 219 |

JADUAL 5.6 (b): Jumlah Berita Perkhidmatan

6.0

DATA LAMAN WEB PTJ: MEDIA SOSIAL (*FOLLOWER*)

| DATA LAMAN WEB UPM: MEDIA SOSIAL | | JUMLAH |
|----------------------------------|-----------|----------------|
| | | 250,200 |
| FACEBOOK (FAN PAGE) | INSTAGRAM | TWITTER |
| 208,000 | 26,000 | 16,200 |

MUKA SURAT

| | | |
|-----|--------------------------------------------------------|----|
| 6.1 | Data MEDIA SOSIAL: FAKULTI | 35 |
| 6.2 | Data MEDIA SOSIAL: INSTITUT | 36 |
| 6.3 | Data MEDIA SOSIAL: PUSAT | 37 |
| 6.4 | Data MEDIA SOSIAL: PEJABAT / JABATAN / BAHAGIAN | 39 |
| 6.5 | Data MEDIA SOSIAL: KOLEJ | 40 |
| 6.6 | Data MEDIA SOSIAL: PERKHIDMATAN | 41 |

DEFINISI JUMLAH bilangan pengikut (follower) bagi media sosial rasmi PTJ.

SUMBER DATA **Facebook, Instagram, Twitter**

NOTA

1. Statistik hanya melibatkan bilangan *FOLLOWER* sahaja.
2. Bagi FACEBOOK, perlu diwujudkan menggunakan kategori FAN PAGE untuk dapatkan FOLLOWER.

DATA MEDIA SOSIAL (*FOLLOWER*): FAKULTI

■ Tertinggi dalam bulan semasa

■ Tertinggi dalam media sosial

(T) – Tiada

| ALAMAT URL | Jan | Feb | Mac | Apr | Mei | Jun | Jul | Ogs | Sep | Okt | Nov |
|------------|--------|--------|--------|--------|--------|--------|--------|--------|--------|--------|--------|
| 1 BTU | 16,639 | 16,870 | 17,020 | 17,096 | 17,205 | 17,424 | 17,905 | 18,193 | 18,193 | 18,851 | 18,959 |
| 2 AGRI | 6,235 | 6,286 | 6,351 | 6,402 | 6,437 | 6,718 | 6,808 | 6,856 | 6,856 | 7,485 | 7,604 |
| 3 ECON | 5,329 | 5,447 | 5,481 | 5,522 | 5,549 | 5,581 | 5,640 | 5,641 | 5,641 | 5,771 | 5,791 |
| 4 ENG | 4,818 | 4,863 | 4,907 | 4,941 | 4,964 | 5,005 | 5,061 | 5,115 | 5,115 | 5,136 | 5,138 |
| 5 MEDIC | 3,986 | 3,992 | 4,090 | 4,101 | 4,134 | 4,149 | 4,033 | 4,031 | 4,031 | 4,153 | 4,159 |
| 6 FOOD | 2,832 | 2,840 | 352 | 2,855 | 374 | 385 | 2,895 | 2,901 | 2,901 | 3,031 | 3,056 |
| 7 ECO1 | 2,837 | 2,847 | 223 | 2,527 | 233 | 234 | 2,837 | 2,838 | 2,838 | 2,851 | 2,956 |
| 8 FORENV | 2,565 | 2,579 | 2,608 | 2,608 | 2,635 | 2,680 | 2,693 | 2,696 | 2,696 | 2,699 | 2,697 |
| 9 FBMK | 1,775 | 1,859 | 2,016 | 2,021 | 2,064 | 2,113 | 2,224 | 2,288 | 2,288 | 2,434 | 2,468 |
| 10 BIOTECH | 1,904 | 1,952 | 1,980 | 1,999 | 2,004 | 2,023 | 2,055 | 2,000 | 2,000 | 2,000 | 2,100 |
| 11 VET | 1,614 | 1,679 | 2,860 | 1,809 | 1,844 | 1,897 | 1,940 | 1,900 | 1,900 | 2,000 | 2,100 |
| 12 FRSB | 1,506 | 1,541 | 1,574 | 1,634 | 1,639 | 1,658 | 1,699 | 1,700 | 1,700 | 1,900 | 1,900 |
| 13 FSKTM | 1,717 | 1,765 | 3,065 | 1,791 | 1,798 | 1,828 | 1,845 | 1,860 | 1,860 | 1,900 | 1,900 |
| 14 SCIENCE | 1,607 | 1,641 | 1,752 | 1,688 | 1,700 | 1,725 | 1,756 | 1,790 | 1,790 | 1,800 | 1,800 |
| 15 EDUC | 0 | 0 | 234 | 225 | 227 | 231 | 231 | 234 | 234 | 238 | 239 |
| PURATA | 3,691 | 3,744 | 3,634 | 3,815 | 3,520 | 3,577 | 3,975 | 4,003 | 4,003 | 4,150 | 4,191 |

JADUAL 6.1 (a): Jumlah Media Sosial (*Follower*) Fakulti

UNTUK RUJUKAN

JUMLAH MENGIKUT KATEGORI MEDIA SOSIAL: FAKULTI

| ALAMAT URL | FACEBOOK (FAN PAGE) | INSTAGRAM | TWITTER | JUMLAH |
|------------|---------------------|-----------|---------|--------|
| 1 BTU | 15,664 | 3,295 | T | 18,959 |
| 2 AGRI | 6,100 | 1,327 | 177 | 7,604 |
| 3 ECON | 5,000 | 791 | T | 5,791 |
| 4 ENG | 4,610 | 528 | T | 5,138 |
| 5 MEDIC | 3,500 | 659 | T | 4,159 |
| 6 FOOD | 2,600 | 456 | T | 3,056 |
| 7 ECO1 | 2,700 | 240 | 16 | 2,956 |
| 8 FORENV | 2,200 | 303 | 194 | 2,697 |
| 9 FBMK | 2,300 | 168 | T | 2,468 |
| 10 BIOTECH | 2,100 | T | T | 2,100 |
| 11 VET | 2,100 | T | T | 2,100 |
| 12 FRSB | 1,900 | T | T | 1,900 |
| 13 FSKTM | 1,900 | T | T | 1,900 |
| 14 SCIENCE | 1,800 | T | T | 1,800 |
| 15 EDUC | 239 | T | T | 239 |

JADUAL 6.1 (b): Jumlah Terperinci Media Sosial (*Follower*) Fakulti

DATA MEDIA SOSIAL (*FOLLOWER*): INSTITUT

■ Tertinggi dalam bulan semasa

■ Tertinggi dalam media sosial

(T) – Tiada

| ALAMAT URL | Jan | Feb | Mac | Apr | Mei | Jun | Jul | Ogs | Sep | Okt | Nov |
|------------|-------|-------|-------|-------|-------|-------|-------|-------|-------|-------|-------|
| INSPEM | 4,202 | 4,208 | 4,220 | 4,218 | 4,219 | 4,220 | 4,197 | 4,195 | 4,195 | 4,200 | 4,202 |
| MYAGEING | 3,191 | 3,204 | 3,218 | 3,225 | 3,234 | 3,244 | 3,297 | 3,329 | 3,329 | 3,393 | 3,414 |
| HALAL | 3,269 | 3,273 | 3,283 | 3,282 | 3,280 | 3,285 | 3,296 | 3,215 | 3,215 | 3,314 | 3,313 |
| IPSAS | 2,439 | 2,536 | 2,551 | 2,617 | 2,634 | 2,649 | 2,622 | 2,621 | 2,621 | 2,723 | 2,722 |
| ION2 | 1,132 | 1,167 | 1,203 | 1,221 | 1,237 | 1,270 | 1,293 | 1,317 | 1,317 | 1,352 | 1,380 |
| IBS | 1,209 | 1,219 | 1,246 | 1,259 | 1,279 | 1,296 | 1,318 | 1,319 | 1,319 | 1,350 | 1,353 |
| INTROP | 1,112 | 1,123 | 1,132 | 1,138 | 1,146 | 1,151 | 1,160 | 1,167 | 1,167 | 1,186 | 1,193 |
| I-AQUAS | 1,057 | 1,067 | 1,072 | 1,074 | 1,075 | 1,078 | 1,081 | 1,086 | 1,086 | 1,092 | 1,097 |
| ITAFOS | 979 | 991 | 1,001 | 1,012 | 1,016 | 1,017 | 1,022 | 1,037 | 1,037 | 1,038 | 1,039 |
| IKP | 211 | 215 | 219 | 230 | 235 | 238 | 248 | 288 | 288 | 307 | 313 |
| PURATA | 1,880 | 1,900 | 1,915 | 1,928 | 1,936 | 1,945 | 1,953 | 1,957 | 1,957 | 1,996 | 2,003 |

JADUAL 6.2 (a): Jumlah Media Sosial (*Follower*) Institut

UNTUK RUJUKAN

JUMLAH MENGIKUT KATEGORI MEDIA SOSIAL: INSTITUT

| ALAMAT URL | FACEBOOK (FAN PAGE) | INSTAGRAM | TWITTER | JUMLAH |
|------------|---------------------|-----------|---------|--------|
| INSPEM | 3,400 | 671 | 131 | 4,202 |
| MYAGEING | 1,710 | 1,704 | T | 3,414 |
| HALAL | 3,100 | 213 | T | 3,313 |
| IPSAS | 2,600 | 122 | T | 2,722 |
| ION2 | 1,000 | 380 | T | 1,380 |
| IBS | 1,200 | 153 | T | 1,353 |
| INTROP | 929 | 246 | 18 | 1,193 |
| I-AQUAS | 1,000 | 78 | 19 | 1,097 |
| ITAFOS | 1,000 | 39 | T | 1,039 |
| IKP | 304 | T | 9 | 313 |

JADUAL 6.2 (b): Jumlah Terperinci Media Sosial (*Follower*) Institut

DATA MEDIA SOSIAL (*FOLLOWER*): PUSAT

■ Tertinggi dalam bulan semasa

■ Tertinggi dalam media sosial

(T) – Tiada

| ALAMAT URL | Jan | Feb | Mac | Apr | Mei | Jun | Jul | Ogs | Sep | Okt | Nov |
|-------------|-------|-------|-------|-------|-------|-------|-------|-------|-------|-------|-------|
| 1 INSPEM | 4,202 | 4,208 | 4,220 | 4,218 | 4,219 | 4,220 | 4,197 | 4,195 | 4,195 | 4,200 | 4,202 |
| 2 MYAGEING | 3,191 | 3,204 | 3,218 | 3,225 | 3,234 | 3,244 | 3,297 | 3,329 | 3,329 | 3,393 | 3,414 |
| 3 HALAL | 3,269 | 3,273 | 3,283 | 3,282 | 3,280 | 3,285 | 3,296 | 3,215 | 3,215 | 3,314 | 3,313 |
| 4 IPSAS | 2,439 | 2,536 | 2,551 | 2,617 | 2,634 | 2,649 | 2,622 | 2,621 | 2,621 | 2,723 | 2,722 |
| 5 ION2 | 1,132 | 1,167 | 1,203 | 1,221 | 1,237 | 1,270 | 1,293 | 1,317 | 1,317 | 1,352 | 1,380 |
| 6 IBS | 1,209 | 1,219 | 1,246 | 1,259 | 1,279 | 1,296 | 1,318 | 1,319 | 1,319 | 1,350 | 1,353 |
| 7 INTROP | 1,112 | 1,123 | 1,132 | 1,138 | 1,146 | 1,151 | 1,160 | 1,167 | 1,167 | 1,186 | 1,193 |
| 8 I-AQUAS | 1,057 | 1,067 | 1,072 | 1,074 | 1,075 | 1,078 | 1,081 | 1,086 | 1,086 | 1,092 | 1,097 |
| 9 ITAFOS | 979 | 991 | 1,001 | 1,012 | 1,016 | 1,017 | 1,022 | 1,037 | 1,037 | 1,038 | 1,039 |
| 10 IKP | 211 | 215 | 219 | 230 | 235 | 238 | 248 | 288 | 288 | 307 | 313 |
| 11 PURATA | 1,880 | 1,900 | 1,915 | 1,928 | 1,936 | 1,945 | 1,953 | 1,957 | 1,957 | 1,996 | 2,003 |
| 12 INSPEM | 4,202 | 4,208 | 4,220 | 4,218 | 4,219 | 4,220 | 4,197 | 4,195 | 4,195 | 4,200 | 4,202 |
| 13 MYAGEING | 3,191 | 3,204 | 3,218 | 3,225 | 3,234 | 3,244 | 3,297 | 3,329 | 3,329 | 3,393 | 3,414 |
| 14 HALAL | 3,269 | 3,273 | 3,283 | 3,282 | 3,280 | 3,285 | 3,296 | 3,215 | 3,215 | 3,314 | 3,313 |
| 15 IPSAS | 2,439 | 2,536 | 2,551 | 2,617 | 2,634 | 2,649 | 2,622 | 2,621 | 2,621 | 2,723 | 2,722 |
| 16 ION2 | 1,132 | 1,167 | 1,203 | 1,221 | 1,237 | 1,270 | 1,293 | 1,317 | 1,317 | 1,352 | 1,380 |
| 17 IBS | 1,209 | 1,219 | 1,246 | 1,259 | 1,279 | 1,296 | 1,318 | 1,319 | 1,319 | 1,350 | 1,353 |
| 18 INTROP | 1,112 | 1,123 | 1,132 | 1,138 | 1,146 | 1,151 | 1,160 | 1,167 | 1,167 | 1,186 | 1,193 |
| 19 I-AQUAS | 1,057 | 1,067 | 1,072 | 1,074 | 1,075 | 1,078 | 1,081 | 1,086 | 1,086 | 1,092 | 1,097 |
| 20 ITAFOS | 979 | 991 | 1,001 | 1,012 | 1,016 | 1,017 | 1,022 | 1,037 | 1,037 | 1,038 | 1,039 |
| 21 IKP | 211 | 215 | 219 | 230 | 235 | 238 | 248 | 288 | 288 | 307 | 313 |
| PURATA | 1,880 | 1,900 | 1,915 | 1,928 | 1,936 | 1,945 | 1,953 | 1,957 | 1,957 | 1,996 | 2,003 |

JADUAL 6.3 (a): Jumlah Media Sosial (*Follower*) Pusat

UNTUK RUJUKAN

JUMLAH MENGIKUT KATEGORI MEDIA SOSIAL: PUSAT

| | ALAMAT URL | FACEBOOK (FAN PAGE) | INSTAGRAM | TWITTER | JUMLAH |
|----|------------|------------------------|-----------|---------|--------|
| 1 | ALUMNI | 18,894 | 3,873 | 535 | 23,302 |
| 2 | CEM | 4,786 | 8,503 | 1 | 13,290 |
| 3 | UCTC | 7,776 | 538 | T | 8,314 |
| 4 | PKPP | 6,800 | 1212 | 226 | 8,238 |
| 5 | ASASI | 4,837 | 2,742 | 140 | 7,719 |
| 6 | PIC | 7,000 | 511 | T | 7,511 |
| 7 | INTL | 3,500 | 3,393 | T | 6,893 |
| 8 | PAC | 5,200 | 1,088 | T | 6,288 |
| 9 | WAZAN | 4,900 | 918 | 35 | 5,853 |
| 10 | PKKSSAAS | 3,700 | 1,401 | 104 | 5,205 |
| 11 | PKU | 2,500 | 342 | 1,034 | 3,876 |
| 12 | CARE | 2,600 | T | T | 2,600 |
| 13 | CALC | 2,150 | T | 0 | 2,150 |
| 14 | RMC | 1,852 | 85 | T | 1,937 |
| 15 | PSPK | 1,629 | T | T | 1,629 |
| 16 | CADE | 1,600 | T | T | 1,600 |
| 17 | IDEC | 1,084 | 220 | 8 | 1,312 |
| 18 | CQA | 558 | 112 | T | 670 |
| 19 | CIRNET | 635 | T | T | 635 |
| 20 | PPDN | 251 | 200 | 25 | 476 |
| 21 | PENERBIT | 128 | T | T | 128 |

JADUAL 6.3 (b): Jumlah Terperinci Media Sosial (*Follower*) Pusat

DATA MEDIA SOSIAL (*FOLLOWER*): PEJABAT / JABATAN / BAHAGIAN

■ Tertinggi dalam bulan semasa

■ Tertinggi dalam media sosial

(T) – Tiada

| ALAMAT URL | Jan | Feb | Mac | Apr | Mei | Jun | Jul | Ogs | Sep | Okt | Nov |
|-------------|--------|--------|--------|--------|--------|--------|--------|--------|--------|--------|--------|
| 1 HEP | 32,904 | 32,846 | 32,826 | 32,797 | 32,769 | 32,808 | 32,780 | 32,814 | 32,814 | 32,814 | 33,031 |
| 2 SGS | 9,593 | 9,730 | 10,007 | 10,071 | 10,118 | 10,235 | 10,388 | 10,408 | 10,408 | 10,745 | 10,867 |
| 3 BKUPM | 5,004 | 5,040 | 5,215 | 5,221 | 5,338 | 0 | 7,333 | 7,312 | 7,312 | 7,817 | 7,821 |
| 4 BKU | 6,657 | 6,772 | 6,804 | 6,807 | 6,822 | 6,954 | 6,980 | 7,010 | 7,010 | 7,270 | 7,269 |
| 5 PALAPES | 3,369 | 3,390 | 3,437 | 3,436 | 3,434 | 3,433 | 3,433 | 3,433 | 3,433 | 3,433 | 3,433 |
| 6 PENDAFTAR | 1,158 | 1,178 | 1,067 | 1,072 | 1,080 | 1,084 | 1,613 | 1,737 | 1,737 | 1,756 | 1,760 |
| 7 AKADEMIK | 187 | 187 | 187 | 187 | 187 | 189 | 1,477 | 1,481 | 1,481 | 1,500 | 1,500 |
| 8 AUDIT | 457 | 466 | 468 | 470 | 471 | 475 | 947 | 1,268 | 1,268 | 1,272 | 1,271 |
| 9 PNC | 1,108 | 1,108 | 1,108 | 1,108 | 1,108 | 1,108 | 1,108 | 1,208 | 1,208 | 1,207 | 1,207 |
| 10 BPP | 750 | 779 | 793 | 809 | 812 | 819 | 822 | 822 | 822 | 918 | 934 |
| 11 OSH | 668 | 707 | 708 | 716 | 722 | 726 | 726 | 738 | 738 | 757 | 758 |
| 12 BURSAR | 509 | 515 | 537 | 547 | 547 | 584 | 604 | 612 | 612 | 625 | 624 |
| 13 TNCPI | 306 | 315 | 316 | 320 | 329 | 418 | 451 | 471 | 471 | 488 | 499 |
| 14 DEVEL | 380 | 380 | 380 | 380 | 380 | 380 | 380 | 380 | 380 | 378 | 378 |
| 15 TNCJINM | 278 | 285 | 291 | 293 | 294 | 294 | 303 | 311 | 311 | 321 | 324 |
| 16 PPUU | T | T | T | T | T | T | T | T | T | T | 0 |
| PURATA | 3,958 | 3,981 | 4,009 | 4,015 | 4,026 | 3,719 | 4,334 | 4,375 | 4,375 | 4,456 | 4,480 |

JADUAL 6.4 (a): Jumlah Media Sosial (*Follower*) Pejabat / Jabatan / Bahagian

UNTUK RUJUKAN

JUMLAH MENGIKUT KATEGORI MEDIA SOSIAL: PEJABAT / JABATAN / BAHAGIAN

| ALAMAT URL | FACEBOOK (FAN PAGE) | INSTAGRAM | TWITTER | JUMLAH |
|-------------|---------------------|-----------|---------|--------|
| 1 HEP | 26,345 | 6,451 | 235 | 33,031 |
| 2 SGS | 9,900 | 967 | T | 10,867 |
| 3 BKUPM | 5,600 | 2,221 | T | 7,821 |
| 4 BKU | 6,200 | 1,069 | T | 7,269 |
| 5 PALAPES | 3,433 | T | T | 3,433 |
| 6 PENDAFTAR | 1,700 | 58 | 2 | 1,760 |
| 7 AKADEMIK | 1500 | T | T | 1,500 |
| 8 AUDIT | 710 | 561 | T | 1,271 |
| 9 PNC | 1,200 | T | 7 | 1,207 |
| 10 BPP | 522 | 412 | T | 934 |
| 11 OSH | 758 | T | T | 758 |
| 12 BURSAR | 624 | T | T | 624 |
| 13 TNCPI | 391 | 108 | T | 499 |
| 14 DEVEL | 331 | 47 | T | 378 |
| 15 TNCJINM | 324 | T | T | 324 |
| 16 PPUU | T | T | T | 0 |

JADUAL 6.4 (b): Jumlah Terperinci Media Sosial (*Follower*) Pejabat / Jabatan / Bahagian

DATA MEDIA SOSIAL (*FOLLOWER*): KOLEJ

■ Tertinggi dalam bulan semasa

■ Tertinggi dalam media sosial

(T) – Tiada

| | ALAMAT URL | Jan | Feb | Mac | Apr | Mei | Jun | Jul | Ogs | Sep | Okt | Nov |
|---|------------|--------|--------|-------|-------|-------|-------|-------|-------|-------|-------|-------|
| 1 | K10 | 7,065 | 7,060 | 7,049 | 7,047 | 7,058 | 7,056 | 7,042 | 7,047 | 7,047 | 7,315 | 7,338 |
| 2 | KPZ | 6,204 | 6,204 | 6,228 | 6,244 | 6,266 | 6,550 | 6,231 | 6,139 | 6,139 | 6,370 | 6,398 |
| 3 | KTDI | 5,813 | 5,815 | 5,863 | 5,879 | 5,934 | 5,950 | 5,928 | 5,943 | 5,943 | 6,021 | 6,117 |
| 4 | KOSASS | 5,231 | 5,231 | 5,235 | 5,239 | 5,246 | 5,249 | 5,245 | 5,239 | 5,239 | 5,531 | 5,565 |
| 5 | K12 | 4,972 | 4,987 | 4,994 | 5,021 | 5,026 | 5,035 | 5,062 | 5,073 | 5,073 | 5,435 | 5,470 |
| 6 | KTAG | 4,880 | 4,870 | 4,886 | 4,899 | 4,896 | 4,900 | 4,921 | 4,952 | 4,952 | 5,076 | 5,098 |
| 7 | KC | 3,830 | 3,835 | 3,837 | 3,837 | 3,859 | 3,872 | 3,876 | 3,884 | 3,884 | 4,093 | 4,109 |
| 8 | KMB | 1,233 | 1,232 | 1,227 | 1,226 | 1,224 | 1,226 | 3,412 | 3,409 | 6 | 13 | 3,112 |
| 9 | K14 | 12,754 | 12,723 | 1,789 | 1,828 | 1,833 | 1,865 | 1,876 | 1,892 | 1,892 | 2,065 | 2,130 |
| | PURATA | 5,776 | 5,773 | 4,568 | 4,580 | 4,594 | 4,634 | 4,844 | 4,842 | 4,464 | 4,658 | 5,037 |

JADUAL 6.5 (a): Jumlah Media Sosial (*Follower*) Kolej

UNTUK RUJUKAN

JUMLAH MENGIKUT KATEGORI MEDIA SOSIAL: KOLEJ

| | ALAMAT URL | FACEBOOK (FAN PAGE) | INSTAGRAM | TWITTER | JUMLAH |
|---|------------|------------------------|-----------|---------|--------|
| 1 | K10 | 4,100 | 2,349 | 889 | 7,338 |
| 2 | KPZ | 2,900 | 2,305 | 1,193 | 6,398 |
| 3 | KTDI | 3,400 | 2,290 | 427 | 6,117 |
| 4 | KOSASS | 2,700 | 2,351 | 514 | 5,565 |
| 5 | K12 | 2,327 | 2,429 | 714 | 5,470 |
| 6 | KTAG | 2,960 | 1,866 | 272 | 5,098 |
| 7 | KC | 1,335 | 1,781 | 993 | 4,109 |
| 8 | KMB | 3,100 | T | 12 | 3,112 |
| 9 | K14 | 123 | 2,007 | T | 2,130 |

JADUAL 6.5 (b): Jumlah Terperinci Media Sosial (*Follower*) Kolej

DATA MEDIA SOSIAL (*FOLLOWER*): PERKHIDMATAN

■ Tertinggi dalam bulan semasa

■ Tertinggi dalam media sosial

(T) – Tiada

| ALAMAT URL | Jan | Feb | Mac | Apr | Mei | Jun | Jul | Ogs | Sep | Okt | Nov |
|---------------|--------|--------|--------|--------|--------|--------|--------|--------|--------|--------|--------|
| 1 HPUPM | 10,860 | 11,397 | 11,864 | 11,963 | 12,127 | 12,416 | 12,743 | 13,129 | 13,129 | 13,263 | 13,309 |
| 2 SCIENCEPARK | 5,673 | 6,426 | 6,648 | 6,615 | 6,600 | 6,581 | 7,461 | 17,569 | 17,569 | 12,532 | 12,508 |
| 3 LIB | 8,824 | 8,872 | 8,953 | 8,991 | 9,040 | 9,181 | 9,262 | 9,342 | 9,342 | 9,548 | 9,603 |
| 4 SUKAN | 174 | 173 | 173 | 172 | 175 | 174 | 175 | 176 | 176 | 177 | 178 |
| PURATA | 6,383 | 6,717 | 6,910 | 6,935 | 6,986 | 7,088 | 7,410 | 10,054 | 10,054 | 8,880 | 8,900 |

JADUAL 6.6 (a): Jumlah Media Sosial (*Follower*) Perkhidmatan

UNTUK RUJUKAN

JUMLAH MENGIKUT KATEGORI MEDIA SOSIAL: PERKHIDMATAN

| ALAMAT URL | FACEBOOK (FAN PAGE) | INSTAGRAM | TWITTER | JUMLAH |
|---------------|------------------------|-----------|---------|--------|
| 1 HPUPM | 11,012 | 1,895 | 402 | 13,309 |
| 2 SCIENCEPARK | 10,000 | 2,508 | T | 12,508 |
| 3 LIB | 7,130 | 1,731 | 742 | 9,603 |
| 4 SUKAN | T | T | 178 | 178 |

JADUAL 6.6 (b): Jumlah Terperinci Media Sosial (*Follower*) Perkhidmatan

7.0

DATA LAMAN WEB PTJ: BROKENLINK

| | |
|--------------------------------|---------------------|
| DATA LAMAN WEB UPM: BROKENLINK | JUMLAH 10 |
|--------------------------------|---------------------|

MUKA SURAT

| | | |
|-----|------------------------------------------------------|----|
| 7.1 | Data BROKENLINK: FAKULTI | 43 |
| 7.2 | Data BROKENLINK: INSTITUT | 44 |
| 7.3 | Data BROKENLINK: PUSAT | 45 |
| 7.4 | Data BROKENLINK: PEJABAT / JABATAN / BAHAGIAN | 46 |
| 7.5 | Data BROKENLINK: KOLEJ | 47 |
| 7.6 | Data BROKENLINK: PERKHIDMATAN | 48 |

DEFINISI Jumlah pautan ke laman web luar UPM yang tidak berfungsi (laman web tidak dapat dipaparkan atau menerima kod ralat).

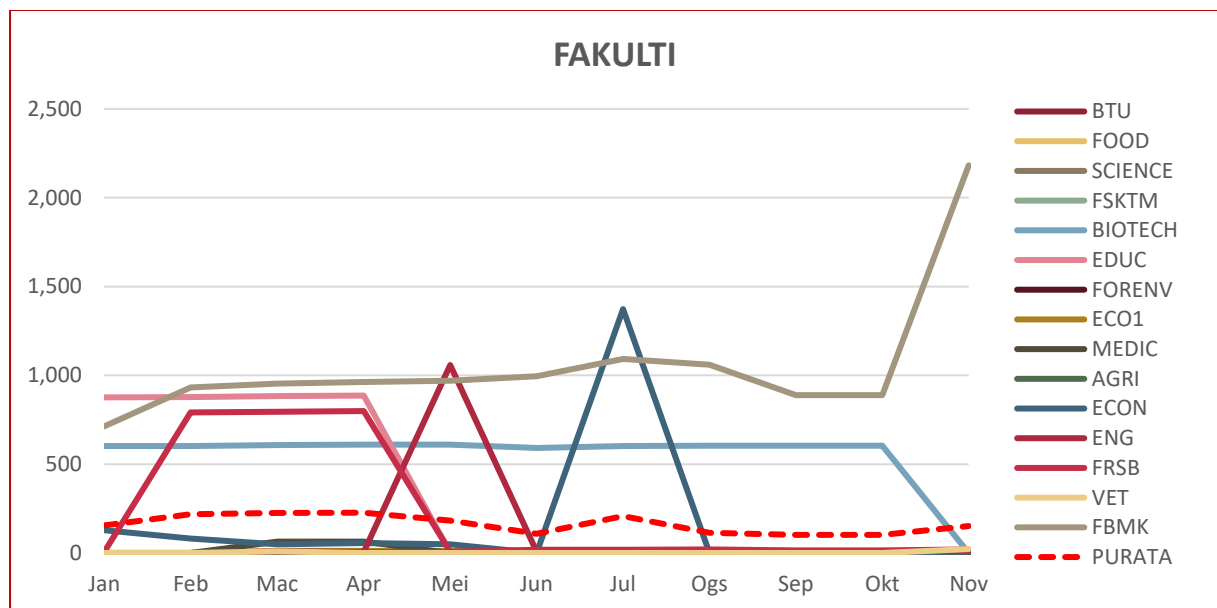
SUMBER DATA <https://www.upm.edu.my/info4web>

DATA BROKENLINK: FAKULTI

■ Tertinggi dalam bulan semasa

| ALAMAT URL | Jan | Feb | Mac | Apr | Mei | Jun | Jul | Ogs | Sep | Okt | Nov |
|------------|-----|-----|-----|-----|-------|-----|-------|-------|-----|-----|-------|
| 1 BTU | 0 | 0 | 0 | 0 | 0 | 0 | 0 | 0 | 0 | 0 | 0 |
| 2 FOOD | 0 | 0 | 0 | 0 | 0 | 0 | 0 | 0 | 0 | 0 | 0 |
| 3 SCIENCE | 0 | 0 | 0 | 0 | 0 | 0 | 0 | 0 | 0 | 0 | 0 |
| 4 FSKTM | 0 | 0 | 2 | 2 | 12 | 0 | 0 | 0 | 0 | 0 | 0 |
| 5 BIOTECH | 602 | 602 | 608 | 610 | 610 | 592 | 602 | 603 | 603 | 603 | 0 |
| 6 EDUC | 876 | 878 | 884 | 886 | 2 | 2 | 4 | 2 | 2 | 2 | 1 |
| 7 FORENV | 0 | 0 | 0 | 0 | 0 | 0 | 0 | 0 | 0 | 0 | 2 |
| 8 ECO1 | 0 | 0 | 12 | 12 | 10 | 0 | 0 | 0 | 2 | 2 | 6 |
| 9 MEDIC | 0 | 0 | 64 | 64 | 0 | 0 | 0 | 0 | 4 | 4 | 6 |
| 10 AGRI | 0 | 0 | 6 | 4 | 6 | 6 | 8 | 6 | 8 | 8 | 6 |
| 11 ECON | 128 | 82 | 48 | 56 | 48 | 0 | 1,373 | 0 | 0 | 0 | 10 |
| 12 ENG | 0 | 0 | 10 | 6 | 1,058 | 8 | 8 | 8 | 8 | 8 | 14 |
| 13 FRSB | 6 | 792 | 795 | 799 | 8 | 18 | 18 | 20 | 14 | 14 | 20 |
| 14 VET | 0 | 0 | 10 | 0 | 0 | 0 | 0 | 0 | 0 | 0 | 22 |
| 15 FBMK | 713 | 931 | 954 | 962 | 970 | 995 | 1,092 | 1,059 | 889 | 889 | 2,182 |
| PURATA | 155 | 219 | 226 | 227 | 182 | 108 | 207 | 113 | 102 | 102 | 151 |

JADUAL 7.1: Jumlah Brokenlink Fakulti



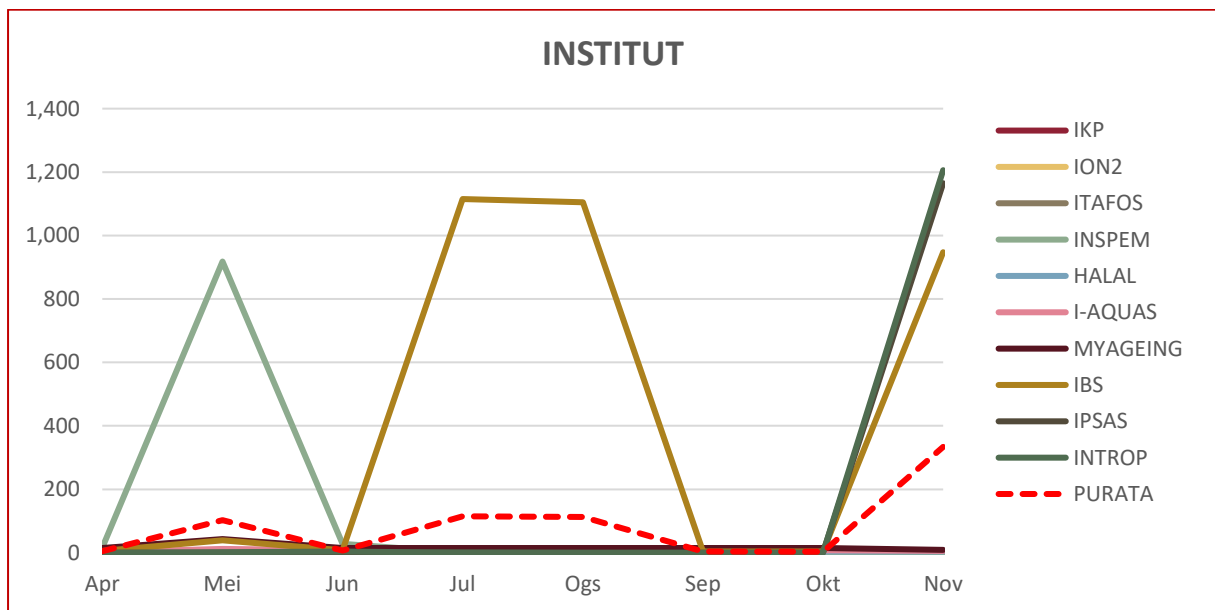
RAJAH 7.1: Jumlah Brokenlink Fakulti

DATA BROKENLINK: INSTITUT

■ Tertinggi dalam bulan semasa

| ALAMAT URL | Jan | Feb | Mac | Apr | Mei | Jun | Jul | Ogs | Sep | Okt | Nov |
|------------|-----|-----|-----|-----|-----|-----|-------|-------|-----|-----|-------|
| 1 IKP | 0 | 0 | 0 | 0 | 0 | 0 | 0 | 0 | 0 | 0 | 0 |
| 2 ION2 | 0 | 0 | 0 | 0 | 0 | 0 | 0 | 0 | 0 | 0 | 0 |
| 3 ITAFOS | 0 | 0 | 4 | 4 | 4 | 2 | 2 | 0 | 0 | 0 | 0 |
| 4 INSPEM | 856 | 0 | 0 | 16 | 918 | 28 | 0 | 0 | 2 | 0 | 0 |
| 5 HALAL | 2 | 2 | 4 | 4 | 4 | 4 | 4 | 4 | 4 | 4 | 4 |
| 6 I-AQUAS | 0 | 2 | 2 | 2 | 12 | 8 | 10 | 8 | 8 | 8 | 6 |
| 7 MYAGEING | 8 | 712 | 15 | 15 | 43 | 15 | 15 | 15 | 15 | 15 | 9 |
| 8 IBS | 0 | 1 | 6 | 6 | 39 | 8 | 1,115 | 1,105 | 4 | 4 | 947 |
| 9 IPSAS | 0 | 0 | 0 | 0 | 0 | 0 | 2 | 0 | 0 | 0 | 1,165 |
| 10 INTROP | 0 | 0 | 0 | 0 | 2 | 4 | 0 | 0 | 0 | 0 | 1,206 |
| PURATA | 87 | 72 | 3 | 5 | 102 | 7 | 115 | 113 | 3 | 3 | 334 |

JADUAL 7.2: Jumlah Brokenlink Institut



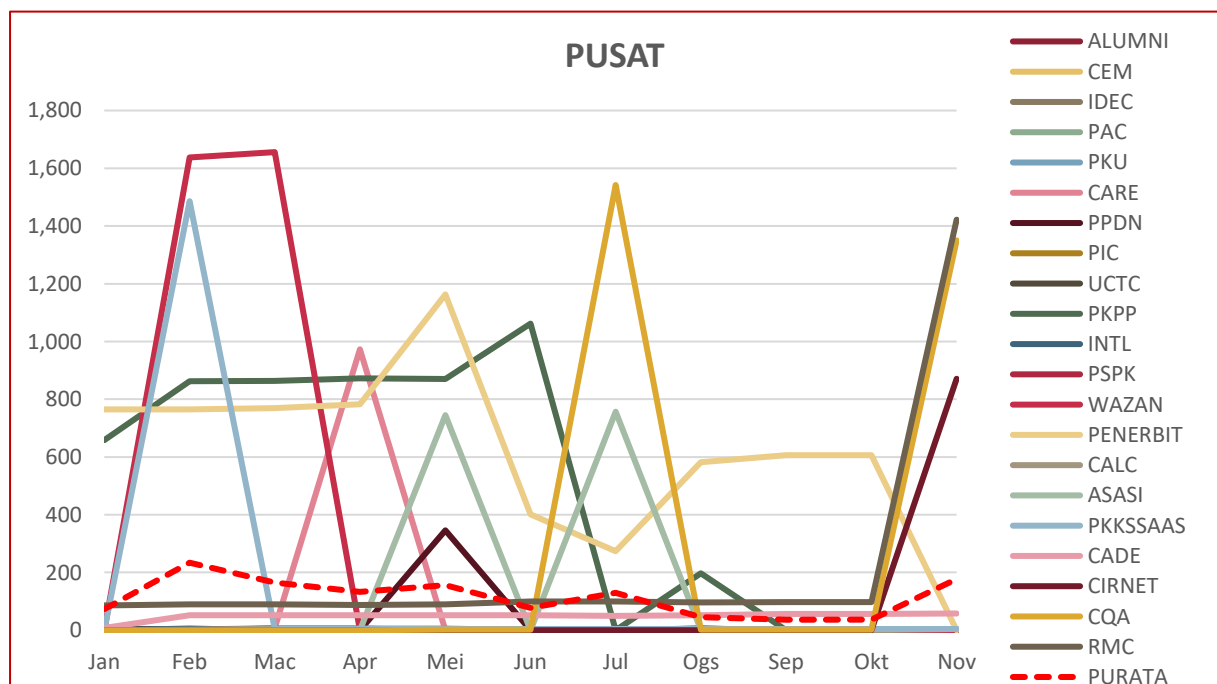
RAJAH 7.2: Jumlah Brokenlink Institut

DATA BROKENLINK: PUSAT

■ Tertinggi dalam bulan semasa

| ALAMAT URL | Jan | Feb | Mac | Apr | Mei | Jun | Jul | Ogs | Sep | Okt | Nov |
|-------------|-----|-------|-------|-----|-------|-------|-------|-----|-----|-----|-------|
| 1 ALUMNI | 0 | 0 | 0 | 0 | 0 | 0 | 0 | 0 | 0 | 0 | 0 |
| 2 CEM | 0 | 0 | 0 | 0 | 0 | 0 | 0 | 0 | 0 | 0 | 0 |
| 3 IDEC | 0 | 0 | 0 | 0 | 0 | 0 | 0 | 0 | 0 | 0 | 0 |
| 4 PAC | 2 | 2 | 0 | 0 | 0 | 0 | 0 | 0 | 0 | 0 | 0 |
| 5 PKU | 0 | 0 | 0 | 2 | 0 | 0 | 0 | 0 | 0 | 0 | 0 |
| 6 CARE | 6 | 2 | 8 | 973 | 0 | 0 | 0 | 6 | 0 | 0 | 0 |
| 7 PPDN | 2 | 2 | 0 | 0 | 346 | 0 | 0 | 0 | 0 | 0 | 0 |
| 8 PIC | 0 | 0 | 0 | 0 | 0 | 0 | 0 | 2 | 0 | 0 | 0 |
| 9 UCTC | 4 | 4 | 4 | 4 | 4 | 0 | 0 | 6 | 0 | 0 | 0 |
| 10 PKPP | 658 | 862 | 864 | 872 | 870 | 1,062 | 0 | 197 | 0 | 0 | 0 |
| 11 INTL | 0 | 6 | 0 | 0 | 0 | 0 | 0 | 0 | 2 | 0 | 0 |
| 12 PSPK | 0 | 0 | 6 | 6 | 0 | 0 | 0 | 0 | 2 | 0 | 0 |
| 13 WAZAN | 0 | 1,638 | 1,656 | 0 | 0 | 0 | 0 | 0 | 2 | 2 | 0 |
| 14 PENERBIT | 765 | 765 | 769 | 783 | 1,163 | 401 | 274 | 582 | 606 | 606 | 0 |
| 15 CALC | 0 | 2 | 6 | 6 | 6 | 0 | 1 | 0 | 0 | 0 | 4 |
| 16 ASASI | 0 | 0 | 2 | 0 | 745 | 0 | 757 | 2 | 4 | 4 | 4 |
| 17 PKKSSAAS | 0 | 1,486 | 4 | 4 | 4 | 4 | 4 | 4 | 4 | 4 | 4 |
| 18 CADE | 8 | 52 | 52 | 52 | 52 | 52 | 50 | 52 | 56 | 56 | 58 |
| 19 CIRNET | 0 | 0 | 0 | 0 | 0 | 0 | 0 | 0 | 0 | 0 | 871 |
| 20 CQA | 0 | 0 | 0 | 0 | 2 | 2 | 1,542 | 2 | 2 | 2 | 1,350 |
| 21 RMC | 86 | 90 | 90 | 88 | 90 | 100 | 100 | 96 | 97 | 97 | 1,422 |
| PURATA | 73 | 234 | 165 | 133 | 156 | 77 | 130 | 45 | 37 | 37 | 177 |

JADUAL 7.3: Jumlah Brokenlink Pusat



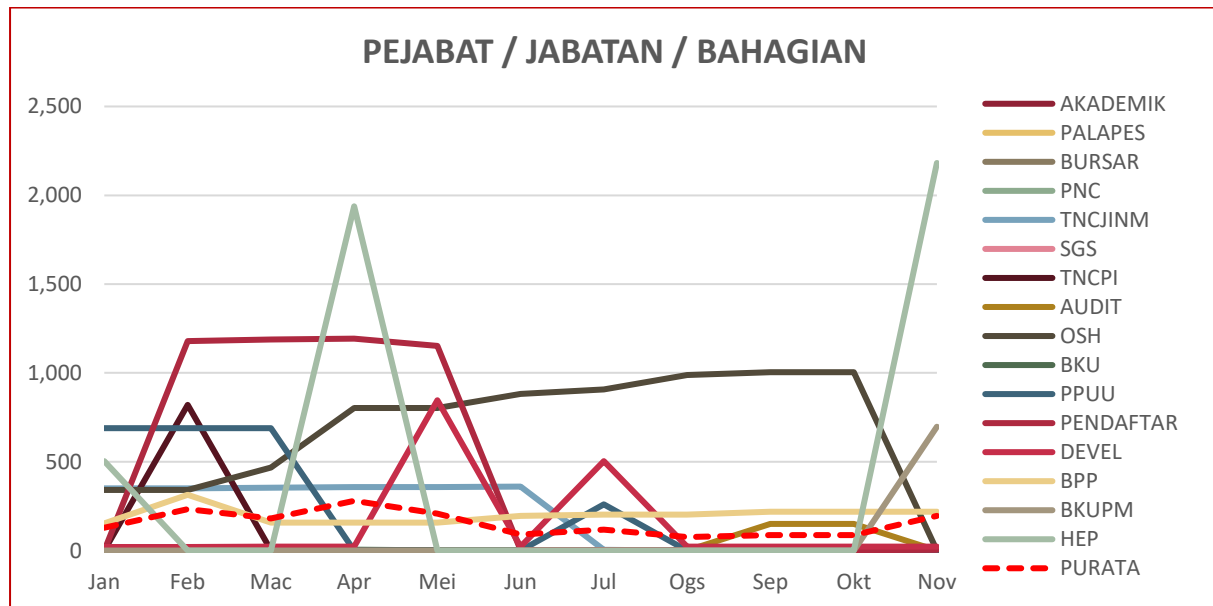
RAJAH 7.3: Jumlah Brokenlink Pusat

DATA BROKENLINK: PEJABAT / JABATAN / BAHAGIAN

■ Tertinggi dalam bulan semasa

| ALAMAT URL | Jan | Feb | Mac | Apr | Mei | Jun | Jul | Ogs | Sep | Okt | Nov |
|--------------|-----|-------|-------|-------|-------|-----|-----|-----|-------|-------|-------|
| 1 AKADEMIK | 0 | 0 | 0 | 0 | 0 | 0 | 0 | 0 | 0 | 0 | 0 |
| 2 PALAPES | 0 | 0 | 0 | 0 | 0 | 0 | 0 | 0 | 0 | 0 | 0 |
| 3 BURSAR | 0 | 0 | 2 | 0 | 0 | 0 | 0 | 0 | 0 | 0 | 0 |
| 4 PNC | 0 | 0 | 6 | 6 | 0 | 0 | 0 | 0 | 0 | 0 | 0 |
| 5 TNCJINM | 350 | 350 | 353 | 357 | 357 | 360 | 5 | 0 | 0 | 0 | 0 |
| 6 SGS | 0 | 0 | 0 | 0 | 0 | 0 | 0 | 0 | 2 | 0 | 0 |
| 7 TNCPI | 0 | 820 | 2 | 2 | 2 | 2 | 2 | 2 | 2 | 2 | 0 |
| 8 AUDIT | 0 | 0 | 0 | 0 | 0 | 0 | 0 | 0 | 150 | 150 | 0 |
| 9 OSH | 341 | 341 | 468 | 803 | 803 | 882 | 907 | 989 | 1,004 | 1,004 | 0 |
| 10 BKU | 0 | 0 | 0 | 0 | 0 | 0 | 0 | 0 | 0 | 0 | 2 |
| 11 PPUU | 689 | 689 | 689 | 0 | 0 | 0 | 260 | 0 | 0 | 0 | 2 |
| 12 PENDAFTAR | 0 | 1,180 | 1,189 | 1,193 | 1,152 | 2 | 2 | 2 | 2 | 2 | 4 |
| 13 DEVEL | 20 | 20 | 22 | 22 | 846 | 22 | 503 | 22 | 22 | 22 | 22 |
| 14 BPP | 153 | 314 | 157 | 157 | 157 | 195 | 203 | 203 | 219 | 219 | 219 |
| 15 BKUPM | 0 | 0 | 0 | 0 | 0 | 0 | 0 | 0 | 0 | 0 | 697 |
| HEP | 503 | 0 | 0 | 1,938 | 0 | 0 | 0 | 0 | 0 | 0 | 2,182 |
| PURATA | 129 | 232 | 181 | 280 | 207 | 91 | 118 | 76 | 88 | 87 | 196 |

JADUAL 7.4: Jumlah Brokenlink Pejabat / Jabatan / Bahagian



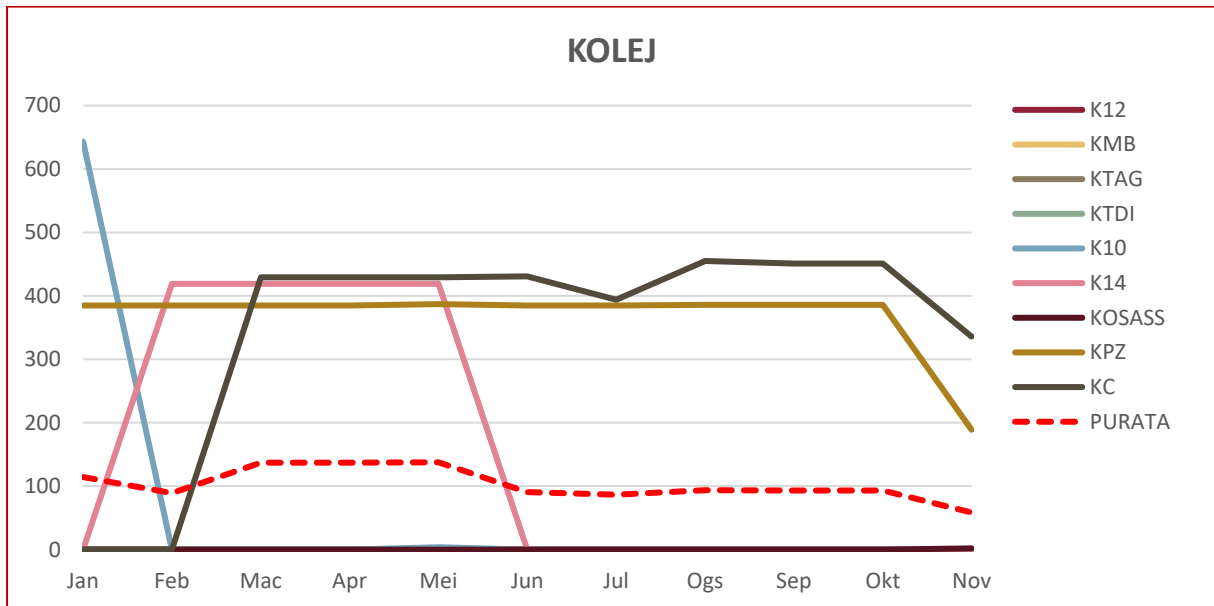
RAJAH 7.4: Jumlah Brokenlink Pejabat / Jabatan / Bahagian

DATA BROKENLINK: KOLEJ

■ Tertinggi dalam bulan semasa

| ALAMAT URL | Jan | Feb | Mac | Apr | Mei | Jun | Jul | Ogs | Sep | Okt | Nov |
|------------|-----|-----|-----|-----|-----|-----|-----|-----|-----|-----|-----|
| 1 K12 | 0 | 0 | 0 | 0 | 0 | 0 | 0 | 0 | 0 | 0 | 0 |
| 2 KMB | 0 | 0 | 0 | 0 | 0 | 0 | 0 | 0 | 0 | 0 | 0 |
| 3 KTAG | 0 | 0 | 0 | 0 | 0 | 0 | 0 | 0 | 0 | 0 | 0 |
| 4 KTDI | 0 | 0 | 0 | 0 | 0 | 0 | 0 | 0 | 0 | 0 | 0 |
| 5 K10 | 643 | 0 | 0 | 0 | 4 | 0 | 0 | 0 | 0 | 0 | 0 |
| 6 K14 | 0 | 419 | 419 | 419 | 419 | 0 | 0 | 0 | 0 | 0 | 0 |
| 7 KOSASS | 0 | 0 | 0 | 0 | 0 | 0 | 0 | 0 | 0 | 0 | 2 |
| 8 KPZ | 385 | 385 | 385 | 385 | 387 | 385 | 385 | 386 | 386 | 386 | 189 |
| 9 KC | 0 | 0 | 429 | 429 | 429 | 431 | 394 | 455 | 451 | 451 | 336 |
| PURATA | 114 | 89 | 137 | 137 | 138 | 91 | 87 | 93 | 93 | 93 | 59 |

JADUAL 7.5: Jumlah Brokenlink Kolej



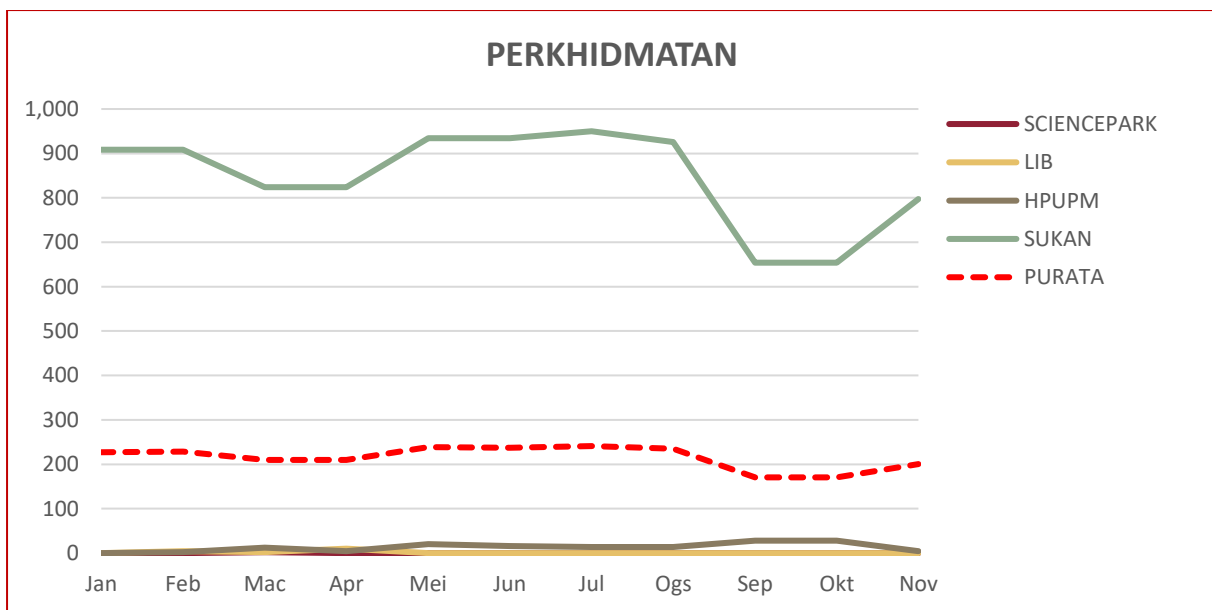
RAJAH 7.5: Jumlah Brokenlink Kolej

DATA BROKENLINK: PERKHIDMATAN

■ Tertinggi dalam bulan semasa

| ALAMAT URL | Jan | Feb | Mac | Apr | Mei | Jun | Jul | Ogs | Sep | Okt | Nov |
|---------------|-----|-----|-----|-----|-----|-----|-----|-----|-----|-----|-----|
| 1 SCIENCEPARK | 0 | 0 | 2 | 0 | 0 | 0 | 0 | 0 | 0 | 0 | 0 |
| 2 LIB | 0 | 4 | 2 | 10 | 0 | 0 | 0 | 0 | 0 | 0 | 0 |
| 3 HPUPM | 0 | 2 | 12 | 4 | 20 | 16 | 14 | 14 | 28 | 28 | 4 |
| 4 SUKAN | 908 | 908 | 824 | 824 | 934 | 934 | 950 | 926 | 654 | 654 | 797 |
| PURATA | 227 | 229 | 210 | 210 | 239 | 238 | 241 | 235 | 171 | 171 | 200 |

JADUAL 7.6: Jumlah Brokenlink Perkhidmatan



RAJAH 7.6: Jumlah Brokenlink Perkhidmatan

8.0

DATA LAMAN WEB PTJ: PUTRA BAKTI

| | |
|----------------------------------------|---------------|
| | JUMLAH |
| DATA LAMAN WEB UPM: PUTRA BAKTI | 308 |

MUKA SURAT

| | | |
|------------|-------------------------------------------------------|-----------|
| 8.1 | Data PUTRA BAKTI: FAKULTI | 50 |
| 8.2 | Data PUTRA BAKTI: INSTITUT | 50 |
| 8.3 | Data PUTRA BAKTI: PUSAT | 51 |
| 8.4 | Data PUTRA BAKTI: PEJABAT / JABATAN / BAHAGIAN | 51 |
| 8.5 | Data PUTRA BAKTI: KOLEJ | 52 |
| 8.6 | Data PUTRA BAKTI: PERKHIDMATAN | 52 |

DEFINISI JUMLAH kandungan laman web PTJ berkaitan aktiviti jaringan industri dan masyarakat luar

NOTA Data Putra Bakti di Laman Web UPM adalah:
JUMLAH aktiviti Putra Bakti yang dilaksanakan di peringkat PTJ.

■ Tertinggi dalam bulan semasa

DATA PUTRA BAKTI: FAKULTI

| | ALAMAT URL | Jan | Feb | Mac | Apr | Mei | Jun | Jul | Ogs | Sep | Okt | Nov |
|----|------------|-----|-----|-----|-----|-----|-----|-----|-----|-----|-----|-----|
| 1 | BTU | 30 | 32 | 40 | 54 | 60 | 70 | 86 | 108 | 120 | 130 | 144 |
| 2 | FOOD | 4 | 4 | 4 | 4 | 4 | 4 | 4 | 4 | 4 | 4 | 4 |
| 3 | AGRI | 0 | 0 | 0 | 0 | 0 | 0 | 0 | 0 | 0 | 0 | 0 |
| 4 | BIOTECH | 0 | 0 | 0 | 0 | 0 | 0 | 0 | 0 | 0 | 0 | 0 |
| 5 | ECO1 | 0 | 0 | 0 | 0 | 0 | 0 | 0 | 0 | 0 | 0 | 0 |
| 6 | ECON | 0 | 0 | 0 | 0 | 0 | 0 | 0 | 0 | 0 | 0 | 0 |
| 7 | EDUC | 0 | 0 | 0 | 0 | 0 | 0 | 0 | 0 | 0 | 0 | 0 |
| 8 | ENG | 0 | 0 | 0 | 0 | 0 | 0 | 0 | 0 | 0 | 0 | 0 |
| 9 | FBMK | 0 | 0 | 0 | 0 | 0 | 0 | 0 | 0 | 0 | 0 | 0 |
| 10 | FORENV | 0 | 0 | 0 | 0 | 0 | 0 | 0 | 0 | 0 | 0 | 0 |
| 11 | FRSB | 0 | 0 | 0 | 0 | 0 | 0 | 0 | 0 | 0 | 0 | 0 |
| 12 | FSKTM | 0 | 0 | 0 | 0 | 0 | 0 | 0 | 0 | 0 | 0 | 0 |
| 13 | MEDIC | 0 | 0 | 0 | 0 | 0 | 0 | 0 | 0 | 0 | 0 | 0 |
| 14 | SCIENCE | 0 | 0 | 0 | 0 | 0 | 0 | 0 | 0 | 0 | 0 | 0 |
| 15 | VET | 0 | 0 | 0 | 0 | 0 | 0 | 0 | 0 | 0 | 0 | 0 |
| | PURATA | 2 | 2 | 3 | 4 | 4 | 5 | 6 | 7 | 8 | 9 | 10 |

JADUAL 8.1: Jumlah Putra Bakti Fakulti

DATA PUTRA BAKTI: INSTITUT

| | ALAMAT URL | Jan | Feb | Mac | Apr | Mei | Jun | Jul | Ogs | Sep | Okt | Nov |
|----|------------|-----|-----|-----|-----|-----|-----|-----|-----|-----|-----|-----|
| 1 | INTROP | 32 | 32 | 32 | 32 | 32 | 32 | 32 | 32 | 32 | 32 | 32 |
| 2 | ION2 | 14 | 14 | 14 | 14 | 14 | 14 | 14 | 14 | 14 | 14 | 14 |
| 3 | IBS | 2 | 2 | 2 | 2 | 2 | 2 | 2 | 2 | 2 | 2 | 2 |
| 4 | HALAL | 0 | 0 | 0 | 0 | 0 | 0 | 0 | 0 | 0 | 0 | 0 |
| 5 | I-AQUAS | 0 | 0 | 0 | 0 | 0 | 0 | 0 | 0 | 0 | 0 | 0 |
| 6 | IKP | 0 | 0 | 0 | 0 | 0 | 0 | 0 | 0 | 0 | 0 | 0 |
| 7 | INSPERM | 0 | 0 | 0 | 0 | 0 | 0 | 0 | 0 | 0 | 0 | 0 |
| 8 | IPSAS | 0 | 0 | 0 | 0 | 0 | 0 | 0 | 0 | 0 | 0 | 0 |
| 9 | ITAFOS | 0 | 0 | 0 | 0 | 0 | 0 | 0 | 0 | 0 | 0 | 0 |
| 10 | MYAGEING | 0 | 0 | 0 | 0 | 0 | 0 | 0 | 0 | 0 | 0 | 0 |
| | PURATA | 5 | 5 | 5 | 5 | 5 | 5 | 5 | 5 | 5 | 5 | 5 |

JADUAL 8.2: Jumlah Putra Bakti Institut

DATA PUTRA BAKTI: PUSAT

| ALAMAT URL | Jan | Feb | Mac | Apr | Mei | Jun | Jul | Ogs | Sep | Okt | Nov |
|-------------|-----|-----|-----|-----|-----|-----|-----|-----|-----|-----|-----|
| 1 ALUMNI | 4 | 10 | 10 | 10 | 10 | 10 | 18 | 18 | 18 | 18 | 18 |
| 2 UCTC | 0 | 0 | 8 | 8 | 8 | 8 | 14 | 14 | 14 | 14 | 14 |
| 3 IDEC | 4 | 6 | 6 | 6 | 6 | 6 | 6 | 6 | 6 | 6 | 6 |
| 4 PPDN | 4 | 4 | 4 | 4 | 4 | 4 | 4 | 4 | 4 | 4 | 4 |
| 5 ASASI | 0 | 0 | 0 | 0 | 0 | 0 | 0 | 0 | 0 | 0 | 0 |
| 6 CADE | 0 | 0 | 0 | 0 | 0 | 0 | 0 | 0 | 0 | 0 | 0 |
| 7 CALC | 0 | 0 | 0 | 0 | 0 | 0 | 0 | 0 | 0 | 0 | 0 |
| 8 CARE | 0 | 0 | 0 | 0 | 0 | 0 | 0 | 0 | 0 | 0 | 0 |
| 9 CEM | 0 | 0 | 0 | 0 | 0 | 0 | 0 | 0 | 0 | 0 | 0 |
| 10 CIRNET | 0 | 0 | 0 | 0 | 0 | 0 | 0 | 0 | 0 | 0 | 0 |
| 11 CQA | 0 | 0 | 0 | 0 | 0 | 0 | 0 | 0 | 0 | 0 | 0 |
| 12 INTL | 0 | 0 | 0 | 0 | 0 | 0 | 0 | 0 | 0 | 0 | 0 |
| 13 PAC | 0 | 0 | 0 | 0 | 0 | 0 | 0 | 0 | 0 | 0 | 0 |
| 14 PENERBIT | 0 | 0 | 0 | 0 | 0 | 0 | 0 | 0 | 0 | 0 | 0 |
| 15 PIC | 0 | 0 | 0 | 0 | 0 | 0 | 0 | 0 | 0 | 0 | 0 |
| 16 PKKSSAAS | 0 | 0 | 0 | 0 | 0 | 0 | 0 | 0 | 0 | 0 | 0 |
| 17 PKPP | 0 | 0 | 0 | 0 | 0 | 0 | 0 | 0 | 0 | 0 | 0 |
| 18 PKU | 0 | 0 | 0 | 0 | 0 | 0 | 0 | 0 | 0 | 0 | 0 |
| 19 PSPK | 0 | 0 | 0 | 0 | 0 | 0 | 0 | 0 | 0 | 0 | 0 |
| 20 RMC | 0 | 0 | 0 | 0 | 0 | 0 | 0 | 0 | 0 | 0 | 0 |
| 21 WAZAN | 0 | 0 | 0 | 0 | 0 | 0 | 0 | 0 | 0 | 0 | 0 |
| PURATA | 1 | 1 | 1 | 1 | 1 | 1 | 2 | 2 | 2 | 2 | 2 |

JADUAL 8.3: Jumlah Putra Bakti Pusat

DATA PUTRA BAKTI: PEJABAT / JABATAN / BAHAGIAN

| ALAMAT URL | Jan | Feb | Mac | Apr | Mei | Jun | Jul | Ogs | Sep | Okt | Nov |
|--------------|-----|-----|-----|-----|-----|-----|-----|-----|-----|-----|-----|
| 1 HEP | 22 | 22 | 22 | 26 | 26 | 26 | 26 | 26 | 26 | 26 | 26 |
| 2 AKADEMIK | 0 | 0 | 0 | 0 | 0 | 0 | 0 | 0 | 0 | 0 | 0 |
| 3 AUDIT | 0 | 0 | 0 | 0 | 0 | 0 | 0 | 0 | 0 | 0 | 0 |
| 4 BKU | 0 | 0 | 0 | 0 | 0 | 0 | 0 | 0 | 0 | 0 | 0 |
| 5 BKUPM | 0 | 0 | 0 | 0 | 0 | 0 | 0 | 0 | 0 | 0 | 0 |
| 6 BPP | 0 | 0 | 0 | 0 | 0 | 0 | 0 | 0 | 0 | 0 | 0 |
| 7 BURSAR | 0 | 0 | 0 | 0 | 0 | 0 | 0 | 0 | 0 | 0 | 0 |
| 8 DEVEL | 0 | 0 | 0 | 0 | 0 | 0 | 0 | 0 | 0 | 0 | 0 |
| 9 OSH | 0 | 0 | 0 | 0 | 0 | 0 | 0 | 0 | 0 | 0 | 0 |
| 10 PALAPES | 0 | 0 | 0 | 0 | 0 | 0 | 0 | 0 | 0 | 0 | 0 |
| 11 PENDAFTAR | 0 | 0 | 0 | 0 | 0 | 0 | 0 | 0 | 0 | 0 | 0 |
| 12 PNC | 0 | 0 | 0 | 0 | 0 | 0 | 0 | 0 | 0 | 0 | 0 |
| 13 PPUU | 0 | 0 | 0 | 0 | 0 | 0 | 0 | 0 | 0 | 0 | 0 |
| 14 SGS | 0 | 0 | 0 | 0 | 0 | 0 | 0 | 0 | 0 | 0 | 0 |
| 15 TNCJINM | 0 | 0 | 0 | 0 | 0 | 0 | 0 | 0 | 0 | 0 | 0 |
| 16 TNCPI | 0 | 0 | 0 | 0 | 0 | 0 | 0 | 0 | 0 | 0 | 0 |
| PURATA | 1 | 1 | 1 | 2 | 2 | 2 | 2 | 2 | 2 | 2 | 2 |

JADUAL 8.4: Jumlah Putra Bakti Pejabat / Jabatan / Bahagian

■ Tertinggi dalam bulan semasa

DATA PUTRA BAKTI: KOLEJ

| | ALAMAT URL | Jan | Feb | Mac | Apr | Mei | Jun | Jul | Ogs | Sep | Okt | Nov |
|---|------------|-----|-----|-----|-----|-----|-----|-----|-----|-----|-----|-----|
| 1 | KTAG | 0 | 0 | 0 | 0 | 0 | 0 | 6 | 8 | 8 | 8 | 8 |
| 2 | K10 | 6 | 6 | 6 | 6 | 6 | 6 | 6 | 6 | 6 | 6 | 6 |
| 3 | KOSASS | 2 | 2 | 2 | 2 | 2 | 2 | 2 | 2 | 2 | 2 | 2 |
| 4 | K12 | 0 | 0 | 0 | 0 | 0 | 0 | 0 | 0 | 0 | 0 | 0 |
| 5 | K14 | 0 | 0 | 0 | 0 | 0 | 0 | 0 | 0 | 0 | 0 | 0 |
| 6 | KC | 0 | 0 | 0 | 0 | 0 | 0 | 0 | 0 | 0 | 0 | 0 |
| 7 | KMB | 0 | 0 | 0 | 0 | 0 | 0 | 0 | 0 | 0 | 0 | 0 |
| 8 | KPZ | 0 | 0 | 0 | 0 | 0 | 0 | 0 | 0 | 0 | 0 | 0 |
| 9 | KTDI | 0 | 0 | 0 | 0 | 0 | 0 | 0 | 0 | 0 | 0 | 0 |
| | PURATA | 1 | 1 | 1 | 1 | 1 | 1 | 2 | 2 | 2 | 2 | 2 |

JADUAL 8.5: Jumlah Putra Bakti Kolej

DATA PUTRA BAKTI: PERKHIDMATAN

| | ALAMAT URL | Jan | Feb | Mac | Apr | Mei | Jun | Jul | Ogs | Sep | Okt | Nov |
|---|-------------|-----|-----|-----|-----|-----|-----|-----|-----|-----|-----|-----|
| 1 | SCIENCEPARK | 4 | 4 | 4 | 4 | 4 | 4 | 4 | 4 | 4 | 4 | 4 |
| 2 | HPUPM | 2 | 2 | 2 | 2 | 2 | 2 | 2 | 2 | 2 | 2 | 2 |
| 3 | LIB | 0 | 0 | 0 | 0 | 0 | 0 | 0 | 0 | 0 | 0 | 0 |
| 4 | SUKAN | 0 | 0 | 0 | 0 | 0 | 0 | 0 | 0 | 0 | 0 | 0 |
| | PURATA | 2 | 2 | 2 | 2 | 2 | 2 | 2 | 2 | 2 | 2 | 2 |

JADUAL 8.6: Jumlah Putra Bakti Perkhidmatan

9.0

DATA LAMAN WEB PTJ: CARIAN DI WEB UPM

MUKA SURAT

9.1 Data CARIAN: PENGGUNA WEB

54

| | |
|----------|--------------------------------------------------------------------------------------------------------------------------------------------------------------------------------------------------------|
| DEFINISI | 50++ CARIAN di laman web UPM oleh pengguna web di dalam kampus dan pengguna web di luar kampus. |
| NOTA | Data CARIAN yang disenaraikan hanya melibatkan maklumat yang wajar dijadikan bahan kandungan web. Data tidak memaparkan maklumat nama individu atau lain-lain perkataan yang tidak bersesuaian. |

DATA CARIAN: PENGGUNA WEB

■ Tertinggi dalam bulan semasa

| | | JUMLAH | | | JUMLAH |
|-----|-------------------------------|--------|-----|---------------------------|--------|
| 1. | jawatan kosong / kerja kosong | 383 | 31. | sgs | 11 |
| 2. | Faculties / fakulti / faculty | 281 | 32. | login | 10 |
| 3. | ejobs / jobs / job | 215 | 33. | nursing | 10 |
| 4. | Master / MBA | 147 | 34. | logo | 10 |
| 5. | jawatan / permohonan jawatan | 141 | 35. | Degree | 9 |
| 6. | apply / permohonan | 128 | 36. | Biasiswa | 9 |
| 7. | phd | 88 | 37. | visa | 9 |
| 8. | application | 69 | 38. | pin | 8 |
| 9. | diploma | 60 | 39. | face | 8 |
| 10. | Fee / yuran | 54 | 40. | Sewaan | 8 |
| 11. | novel writing | 47 | 41. | DAFTAR | 8 |
| 12. | Admission | 47 | 42. | SUMBER MANUSIA | 8 |
| 13. | staff | 33 | 43. | education | 8 |
| 14. | borang | 32 | 44. | sistem permohonan jawatan | 8 |
| 15. | Undergraduate | 25 | 45. | pembantu operasi | 8 |
| 16. | thesis | 23 | 46. | felo | 8 |
| 17. | CGPA | 21 | 47. | latihan industri | 7 |
| 18. | kerjaya / career | 21 | 48. | Pensyarah | 7 |
| 19. | Search | 19 | 49. | temuduga | 7 |
| 20. | lab | 19 | 50. | takwim | 7 |
| 21. | programme | 17 | 51. | graduation | 7 |
| 22. | turnitin | 17 | 52. | cuti | 7 |
| 23. | kursus / course | 17 | 53. | carta organisasi | 7 |
| 24. | setiausaha | 16 | 54. | Bilik | 7 |
| 25. | Psychology | 15 | 55. | POSTGRADUATE | 7 |
| 26. | accommodation | 13 | 56. | chemistry | 6 |
| 27. | pengarah | 13 | 57. | Bachelor | 6 |
| 28. | eksa | 13 | 58. | tender | 6 |
| 29. | kerja | 12 | 59. | Intake | 6 |
| 30. | english | 11 | 60. | clinical psychology | 6 |

RINGKASAN CARIAN

TOPIK POPULAR

1. jawatan kosong / kerja kosong
 2. Faculties / Fakulti / Faculty
 3. ejobs / jobs / job
 4. PHD / Master / MBA / Diploma
 5. Application / Apply / Permohonan
 6. Fees / Fee / Scholarship
 7. Novel Writing
 8. Admission
 9. Staff
 10. Borang / Borang Permohonan
 11. Undergraduate / Postgraduate
 12. Kerjaya / Career
 13. Courses / Programme
-