

LAPORAN STATISTIK LAMAMAN WEB PTJ UPM NOVEMBER 2020

VERSI 1.0

KANDUNGAN

MUKA SURAT

	Data Laman Web UPM	1
1.0	Data Laman Web PTJ: SAIZ LAMAN WEB	2
2.0	Data Laman Web PTJ: PAUTAN MASUK (BACKLINK)	9
3.0	Data Laman Web PTJ: DOMAIN	20
4.0	Data Laman Web PTJ: ARTIKEL & BERITA	27
5.0	Data Laman Web PTJ: MEDIA SOSIAL (FOLLOWER)	34
6.0	Data Laman Web PTJ: BROKENLINK	40
7.0	Data Laman Web PTJ: PUTRA BAKTI	47
8.0	Data Laman Web PTJ: CARIAN DI WEB UPM	51

MAKLUMAT UNTUK DIHUBUNGI:
webptj@upm.edu.my

TERMINOLOGI: ALAMAT URL

FAKULTI

1	agri	FAKULTI PERTANIAN
2	biotech	FAKULTI BIOTEKNOLOGI DAN SAINS BIOMOLEKUL
3	btu	FAKULTI SAINS PERTANIAN DAN MAKANAN
4	eco1	FAKULTI EKOLOGI MANUSIA
5	econ	SEKOLAH PERNIAGAAN DAN EKONOMI UPM
6	educ	FAKULTI PENGAJIAN PENDIDIKAN
7	eng	FAKULTI KEJURUTERAAN
8	fbmk	FAKULTI BAHASA MODEN DAN KOMUNIKASI
9	food	FAKULTI SAINS DAN TEKNOLOGI MAKANAN
10	forenv	FAKULTI PERHUTANAN DAN ALAM SEKITAR
11	frsb	FAKULTI REKABENTUK DAN SENIBINA
12	fsktm	FAKULTI SAINS KOMPUTER DAN TEKNOLOGI MAKLUMAT
13	medic	FAKULTI PERUBATAN DAN SAINS KESIHATAN
14	science	FAKULTI SAINS
15	vet	FAKULTI PERUBATAN VETERINAR

INSTITUT

1	halal	INSTITUT PENYELIDIKAN PRODUK HALAL
2	i-aquas	INSTITUT ANTARABANGSA AKUAKULTUR DAN SAINS AKUATIK
3	ibs	INSTITUT BIOSAINS
4	ikp	INSTITUT KAJIAN PERLADANGAN
5	inspem	INSTITUT PENYELIDIKAN MATEMATIK
6	introp	INSTITUT PERHUTANAN TROPIKA DAN PRODUK HUTAN
7	ipsas	INSTITUT PENGAJIAN SAINS SOSIAL
8	itafos	INSTITUT PERTANIAN TROPIKA DAN SEKURITI MAKANAN
9	itma	INSTITUT TEKNOLOGI MAJU
10	myageing	INSTITUT PENYELIDIKAN PENUAAN MALAYSIA

PUSAT

1	alumni	PUSAT ALUMNI
2	asasi	PUSAT ASASI SAINS PERTANIAN
3	cade	PUSAT PEMBANGUNAN AKADEMIK
4	calc	PUSAT PEMAJUAN KOMPETENSI BAHASA
5	care	PUSAT SUMBER DAN PENDIDIKAN KANSER
6	cem	PUSAT PEMBANGUNAN KEUSAHAWAN DAN KEBOLEHPASARAN GRADUAN
7	cirnet	PUSAT HUBUNGAN DAN JARINGAN INDUSTRI
8	cqa	PUSAT JAMINAN KUALITI (CQA)
9	i-sukan	PUSAT SUKAN
10	idec	PUSAT PEMBANGUNAN MAKLUMAT DAN KOMUNIKASI
11	intl	PUSAT ANTARABANGSA
12	pic	PUSAT ISLAM
13	pkpp	PUSAT KOKURIKULUM DAN PEMBANGUNAN PELAJAR
14	pkssaas	PUSAT KEBUDAYAAN DAN KESENIAAN SULTAN SALAHUDDIN ABDUL AZIZ SHAH
15	pku	PUSAT KESIHATAN UNIVERSITI
16	ppdn	PUSAT PENGIMEJAN DIAGNOSTIK NUKLEAR
17	rmc	PUSAT PENGURUSAN PENYELIDIKAN
18	uctc	PUSAT TRANSFORMASI KOMUNITI UNIVERSITI
19	wazan	PUSAT PENGURUSAN WAKAF, ZAKAT DAN ENDOWMEN

KOLEJ

1	k10	KOLEJ SEPULUH
2	k12	KOLEJ DUA BELAS
3	k13	KOLEJ TIGA BELAS
4	k14	KOLEJ EMPAT BELAS
5	k17	KOLEJ TUJUH BELAS
6	kc	KOLEJ CANSOLOR
7	kosass	KOLEJ SULTAN ALAEDDIN SULEIMAN SHAH
8	kpz	KOLEJ PENDITA ZA'ABA
9	ktdi	KOLEJ TUN DR ISMAIL

PEJABAT / JABATAN / BAHAGIAN

1	akademik	BAHAGIAN KEMASUKAN & BAHAGIAN URUS TADBIR AKADEMIK
2	audit	BAHAGIAN AUDIT DALAM
3	bursar	PEJABAT BENDAHARI
4	bku	BAHAGIAN KESELAMATAN
5	bkupm	BAHAGIAN KAUNSELING UPM
6	coscomm	PEJABAT STRATEGI KORPORAT DAN KOMUNIKASI
7	devel	PEJABAT PEMBANGUNAN DAN PENGURUSAN ASET
8	hep	BAHAGIAN HAL EHWAL PELAJAR
9	osh	PEJABAT PENGURUSAN KESELAMATAN DAN KESIHATAN PERKERJAAN
10	pendaftar	PEJABAT PENDAFTAR
11	pnc	PEJABAT NAIB CANSOLOR
12	ppuu	PEJABAT PENASIHAT UNDANG-UNDANG
13	tncjnm	PEJABAT TIMBALAN NAIB CANSOLOR (JARINGAN INDUSTRI DAN MASYARAKAT)
14	tncpi	PEJABAT TIMBALAN NAIB CANSOLOR (PENYELIDIKAN DAN INOVASI)
15	sgs	SEKOLAH PENGAJIAN SISWAZAH

PERKHIDMATAN

1	hpupm	HOSPITAL PENGAJAR UPM
2	lib	PERPUSTAKAAN
3	palapes	PASUKAN LATIHAN PEGAWAI SIMPANAN
4	penerbit	PENERBIT
5	sciencepark	PUTRA SCIENCE PARK
6	sukan	AKADEMI SUKAN
7	tpu	TAMAN PERTANIAN UNIVERSITI

Nota:

Bermula pada bulan Mac 2020:

1. FAKULTI EKONOMI DAN PENGURUSAN telah bertukar kepada SEKOLAH PERNIAGAAN DAN EKONOMI.
2. FAKULTI PENGAJIAN ALAM SEKITAR dan FAKULTI PERHUTANAN telah digabungkan menjadi FAKULTI PERHUTANAN DAN ALAM SEKITAR.

Bermula pada bulan Julai 2020:

1. INSTITUT KAJIAN DASAR PERTANIAN DAN MAKANAN telah digabungkan dengan INSTITUT PERTANIAN TROPIKA DAN SEKURITI MAKANAN.

Bermula pada bulan Oktober 2020:

1. Alamat URL untuk PUSAT KOKURIKULUM DAN PEMBANGUNAN PELAJAR telah ditukar daripada pkk kepada pkpp.

DATA LAMAN WEB UPM

NOVEMBER 2020

		DATA
1	SAIZ	15,178
2	PAUTAN MASUK	8,884,628
3	DOMAIN	14,259
4	ARTIKEL	90
5	BERITA	2,740
6	MEDIA SOSIAL (<i>FOLLOWER</i>)	223,223
7	BROKENLINK	26,485
8	PUTRA BAKTI	0

1.0

DATA LAMAN WEB PTJ: SAIZ LAMAN WEB

DATA LAMAN WEB UPM: SAIZ

15,178

MUKA SURAT

1.1	Data SAIZ: FAKULTI	3
1.2	Data SAIZ: INSTITUT	4
1.3	Data SAIZ: PUSAT	5
1.4	Data SAIZ: PEJABAT/ JABATAN / BAHAGIAN	6
1.5	Data SAIZ: KOLEJ	7
1.6	Data SAIZ: PERKHIDMATAN	8

DEFINISI Jumlah saiz seluruh laman web PTJ termasuk setiap berita, aktiviti, kandungan dan sebagainya.

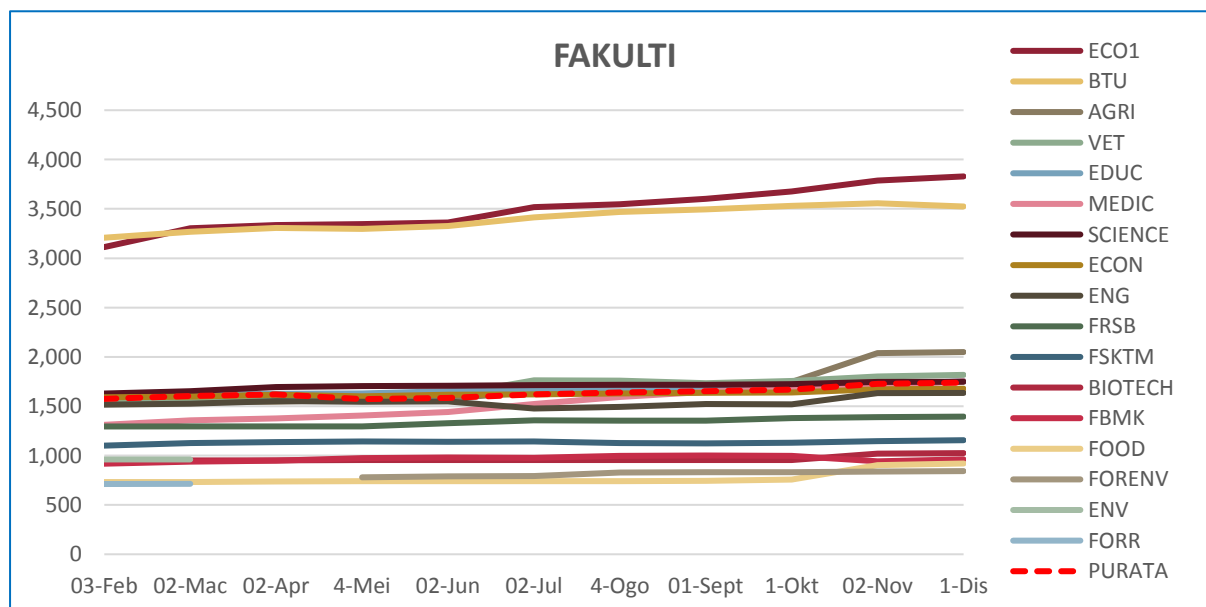
SUMBER DATA <https://www.upm.edu.my/webinfo>

DATA SAIZ: FAKULTI

■ Tertinggi dalam bulan semasa

ALAMAT URL	3-Feb	2-Mar	2-Apr	4-Mei	2-Jun	2-Jul	4-Ogo	1-Sep	1-Okt	2-Nov	1-Dis
ECO1	3,113	3,303	3,335	3,345	3,363	3,518	3,548	3,602	3,678	3,787	3,829
BTU	3,208	3,268	3,308	3,296	3,328	3,414	3,469	3,494	3,532	3,557	3,523
AGRI	1,534	1,544	1,546	1,573	1,580	1,644	1,670	1,719	1,747	2,039	2,049
VET	1,542	1,557	1,569	1,587	1,609	1,762	1,760	1,732	1,756	1,802	1,818
EDUC	1,617	1,621	1,625	1,631	1,653	1,678	1,686	1,688	1,692	1,715	1,755
MEDIC	1,312	1,358	1,377	1,407	1,441	1,523	1,594	1,646	1,681	1,703	1,753
SCIENCE	1,629	1,651	1,695	1,705	1,709	1,715	1,719	1,719	1,723	1,746	1,748
ECON	1,591	1,597	1,617	1,602	1,618	1,621	1,631	1,635	1,639	1,672	1,678
ENG	1,517	1,527	1,553	1,546	1,548	1,477	1,494	1,523	1,521	1,633	1,635
FRSB	1,295	1,297	1,297	1,297	1,329	1,357	1,355	1,355	1,379	1,389	1,395
FSKTM	1,101	1,126	1,138	1,142	1,140	1,144	1,126	1,125	1,131	1,146	1,156
BIOTECH	951	951	953	955	955	955	955	955	955	1,021	1,025
FBMK	918	940	948	976	980	978	997	1,001	998	942	963
FOOD	732	732	738	740	740	740	740	744	756	904	920
FORENV	-	-	-	780	790	794	827	833	833	837	843
ENV	961	961	-	-	-	-	-	-	-	-	-
FORR	712	714	-	-	-	-	-	-	-	-	-
PURATA	1,576	1,605	1,621	1,572	1,586	1,621	1,638	1,651	1,668	1,726	1,739

JADUAL 1.1: Data Saiz Fakulti



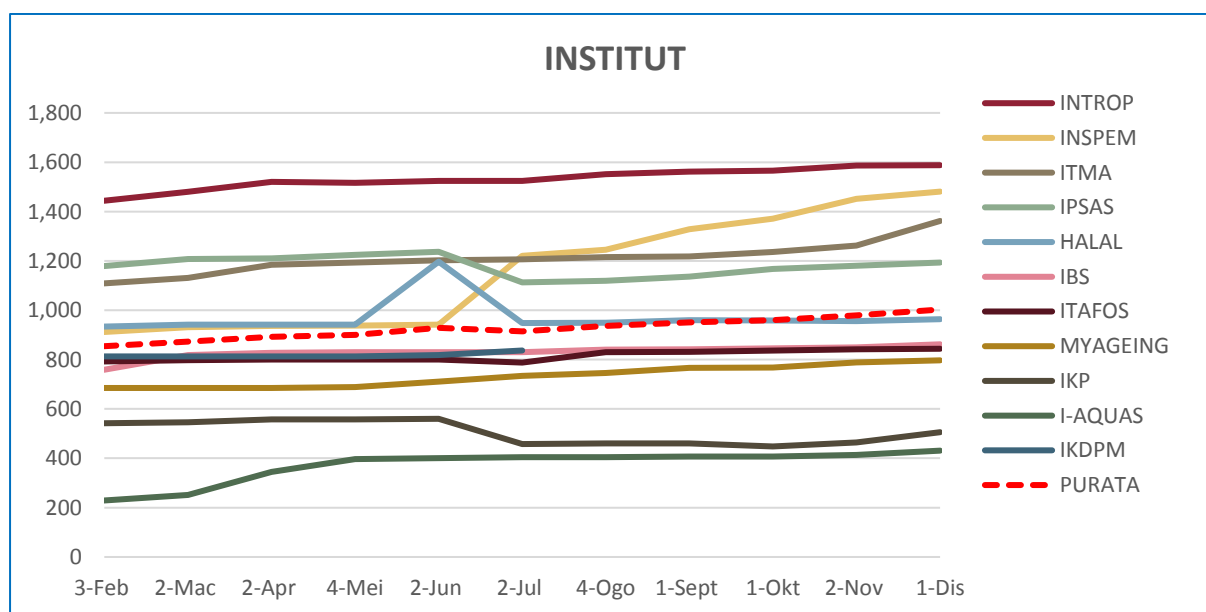
RAJAH 1.1: Data Saiz Fakulti

DATA SAIZ: INSTITUT

■ Tertinggi dalam bulan semasa

ALAMAT URL	3-Feb	2-Mar	2-Apr	4-Mei	2-Jun	2-Jul	4-Ogo	1-Sep	1-Okt	2-Nov	1-Dis
INTROP	1,444	1,480	1,520	1,516	1,524	1,524	1,552	1,562	1,566	1,586	1,588
INSPEM	912	932	936	938	942	1,221	1,245	1,329	1,371	1,452	1,481
ITMA	1,109	1,131	1,185	1,193	1,203	1,206	1,216	1,218	1,236	1,262	1,362
IPSAS	1,179	1,208	1,210	1,225	1,237	1,113	1,119	1,137	1,168	1,180	1,194
HALAL	934	942	942	942	1,197	948	950	960	958	956	964
IBS	759	819	827	830	830	830	840	842	846	850	862
ITAFOS	792	798	800	800	800	788	830	832	836	842	844
MYAGEING	685	685	685	689	711	734	746	766	768	788	797
IKP	542	546	558	558	560	458	460	460	448	464	506
I-AQUAS	229	251	345	397	401	405	405	407	407	413	431
IKDPM	813	813	813	813	818	837	-	-	-	-	-
PURATA	854	873	893	900	929	915	936	951	960	979	1,003

JADUAL 1.2: Data Saiz Institut



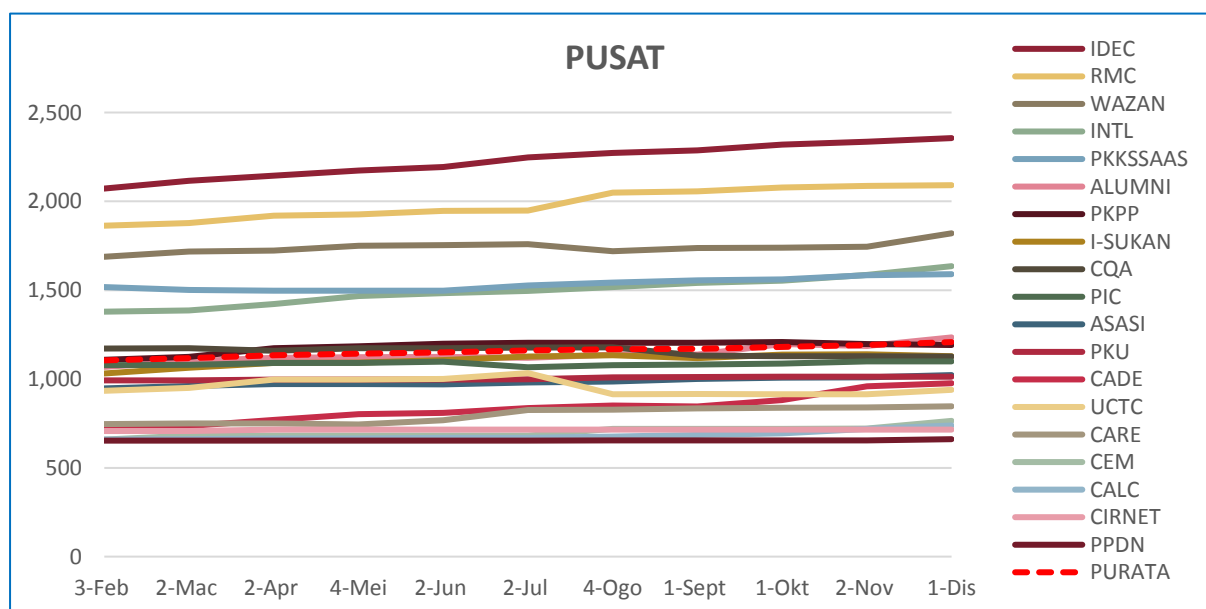
RAJAH 1.2: Data Saiz Institut

DATA SAIZ: PUSAT

■ Tertinggi dalam bulan semasa

ALAMAT URL	3-Feb	2-Mar	2-Apr	4-Mei	2-Jun	2-Jul	4-Ogo	1-Sep	1-Okt	2-Nov	1-Dis
IDEC	2,072	2,115	2,145	2,173	2,193	2,247	2,273	2,287	2,319	2,336	2,356
RMC	1,863	1,877	1,919	1,927	1,947	1,949	2,049	2,057	2,077	2,087	2,091
WAZAN	1,688	1,718	1,722	1,749	1,753	1,759	1,719	1,737	1,739	1,744	1,820
INTL	1,379	1,385	1,421	1,467	1,483	1,495	1,517	1,540	1,554	1,586	1,635
PKKSSAAS	1,517	1,501	1,497	1,497	1,497	1,527	1,543	1,555	1,560	1,584	1,590
ALUMNI	1,068	1,100	1,120	1,122	1,124	1,120	1,138	1,138	1,196	1,186	1,234
PKPP	1,108	1,124	1,174	1,184	1,198	1,204	1,204	1,204	1,208	1,196	1,192
I-SUKAN	1,031	1,063	1,091	1,092	1,106	1,126	1,134	1,118	1,137	1,139	1,129
CQA	1,172	1,174	1,158	1,174	1,174	1,176	1,178	1,132	1,128	1,128	1,126
PIC	1,078	1,080	1,090	1,090	1,098	1,066	1,078	1,082	1,086	1,099	1,099
ASASI	947	961	971	971	969	981	985	1,001	1,007	1,009	1,022
PKU	992	992	996	996	996	999	1,009	1,011	1,013	1,013	1,013
CADE	716	735	770	802	810	836	851	845	882	959	976
UCTC	933	949	997	997	1,001	1,033	914	916	914	914	938
CARE	746	750	750	744	768	826	828	834	838	840	846
CEM	659	681	681	681	681	681	719	719	719	720	764
CALC	659	661	665	665	669	669	675	685	693	719	738
CIRNET	707	707	715	715	715	715	715	715	715	715	715
PPDN	653	653	653	653	653	653	655	655	655	655	661
PURATA	1,105	1,117	1,133	1,142	1,149	1,161	1,168	1,170	1,181	1,191	1,208

JADUAL 1.3: Data Saiz Pusat



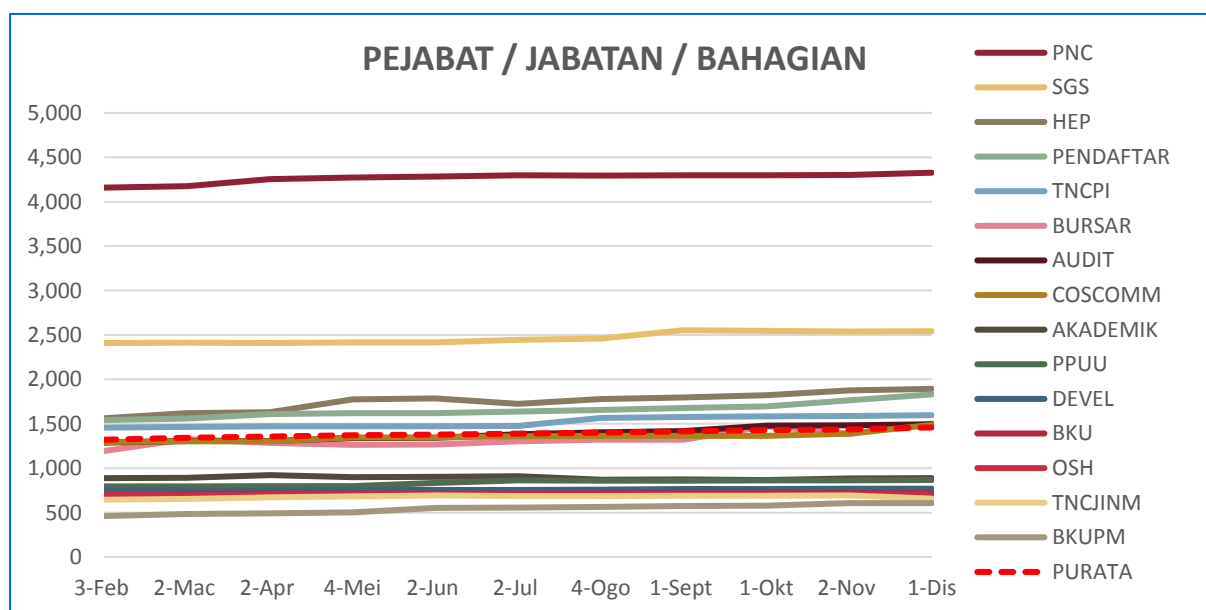
RAJAH 1.3: Data Saiz Pusat

DATA SAIZ: PEJABAT / JABATAN / BAHAGIAN

■ Tertinggi dalam bulan semasa

ALAMAT URL	3-Feb	2-Mar	2-Apr	4-Mei	2-Jun	2-Jul	4-Ogo	1-Sep	1-Okt	2-Nov	1-Dis
PNC	4,159	4,175	4,253	4,271	4,283	4,299	4,295	4,297	4,299	4,301	4,327
SGS	2,409	2,411	2,409	2,417	2,417	2,445	2,461	2,553	2,547	2,539	2,543
HEP	1,562	1,619	1,632	1,776	1,784	1,726	1,778	1,797	1,822	1,875	1,893
PENDAFTAR	1,542	1,560	1,609	1,619	1,621	1,637	1,655	1,679	1,695	1,763	1,831
TNCPI	1,457	1,465	1,471	1,471	1,471	1,475	1,565	1,577	1,583	1,587	1,597
BURSAR	1,194	1,328	1,284	1,264	1,268	1,302	1,319	1,321	1,472	1,384	1,502
AUDIT	1,288	1,307	1,307	1,339	1,343	1,381	1,405	1,417	1,478	1,482	1,494
COSCOMM	1,295	1,303	1,301	1,347	1,347	1,359	1,363	1,363	1,363	1,389	1,487
AKADEMIK	888	892	922	898	902	908	870	874	866	885	889
PPUU	795	795	799	799	835	863	859	859	861	861	867
DEVEL	741	747	749	753	753	753	757	765	765	769	769
BKU	668	710	716	716	716	716	718	718	718	718	718
OSH	701	693	707	707	705	705	705	705	705	705	705
TNCJINM	645	655	673	683	693	685	687	689	689	693	657
BKUPM	461	485	491	501	553	557	565	573	577	607	607
PURATA	1,320	1,343	1,355	1,371	1,379	1,387	1,400	1,412	1,429	1,437	1,459

JADUAL 1.4: Data Saiz Pejabat / Jabatan / Bahagian



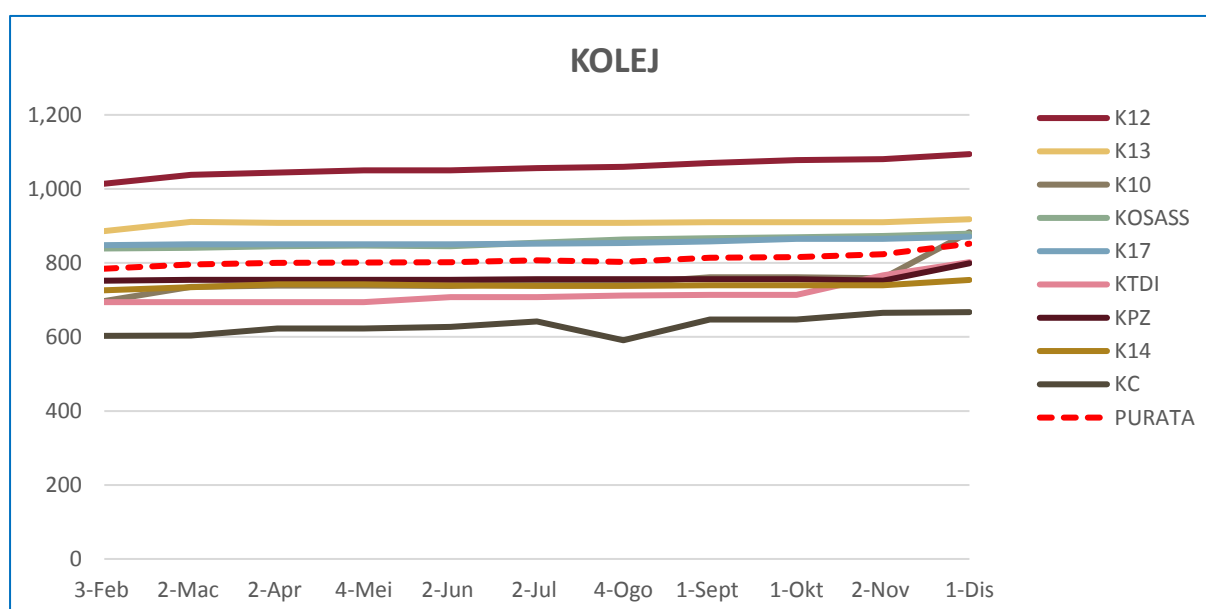
RAJAH 1.4: Data Saiz Pejabat / Jabatan / Bahagian

DATA SAIZ: KOLEJ

■ Tertinggi dalam bulan semasa

ALAMAT URL	3-Feb	2-Mar	2-Apr	4-Mei	2-Jun	2-Jul	4-Ogo	1-Sep	1-Okt	2-Nov	1-Dis
K12	1,014	1,038	1,044	1,050	1,050	1,056	1,060	1,070	1,078	1,080	1,094
K13	886	911	908	908	908	908	908	910	910	910	918
K10	697	735	739	739	738	745	745	761	761	759	883
KOSASS	839	841	845	847	845	855	863	867	869	873	879
K17	848	850	850	850	850	852	854	858	865	865	871
KTDI	694	694	694	694	708	708	712	714	714	766	802
KPZ	752	754	754	754	754	756	756	756	756	752	799
K14	726	734	742	742	739	738	738	740	740	740	754
KC	603	604	623	623	627	642	591	647	647	665	667
PURATA	784	796	800	801	802	807	803	814	816	823	852

JADUAL 1.5: Data Saiz Kolej



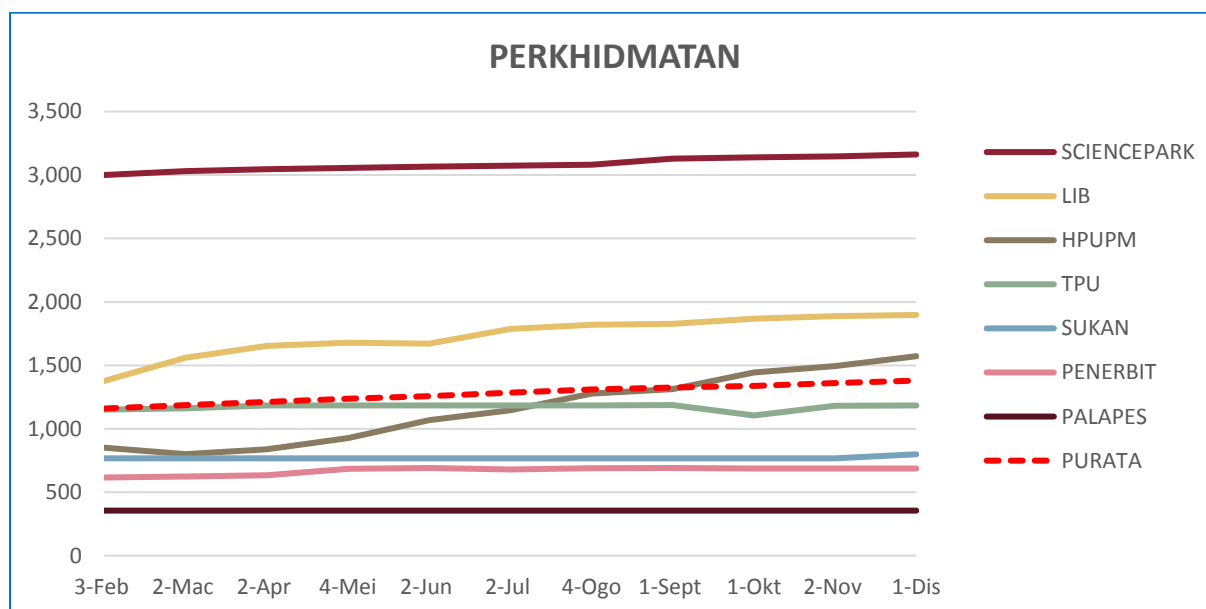
RAJAH 1.5: Data Saiz Kolej

DATA SAIZ: PERKHIDMATAN

■ Tertinggi dalam bulan semasa

ALAMAT URL	3-Feb	2-Mar	2-Apr	4-Mei	2-Jun	2-Jul	4-Ogo	1-Sep	1-Okt	2-Nov	1-Dis
SCIENCEPARK	3,000	3,030	3,046	3,056	3,066	3,074	3,082	3,128	3,138	3,148	3,162
LIB	1,377	1,559	1,653	1,679	1,672	1,786	1,820	1,828	1,868	1,887	1,897
HPUPM	851	800	838	926	1,068	1,146	1,276	1,312	1,443	1,495	1,572
TPU	1,150	1,162	1,183	1,183	1,183	1,183	1,185	1,187	1,105	1,181	1,185
SUKAN	767	767	767	767	767	767	767	767	767	767	799
PENERBIT	616	624	634	683	691	679	689	691	687	687	687
PALAPES	355	355	355	355	355	355	355	355	355	355	355
PURATA	1,159	1,185	1,211	1,236	1,257	1,284	1,311	1,324	1,338	1,360	1,380

JADUAL 1.6: Data Saiz Perkhidmatan



RAJAH 1.6: Data Saiz Perkhidmatan

2.0

DATA LAMAN WEB PTJ: PAUTAN MASUK (BACKLINK)

DATA LAMAN WEB UPM: PAUTAN MASUK

8,884,628

MUKA SURAT

2.1	Data PAUTAN MASUK: FAKULTI	10
2.2	Data PAUTAN MASUK: INSTITUT	12
2.3	Data PAUTAN MASUK: PUSAT	14
2.4	Data PAUTAN MASUK: PEJABAT / JABATAN / BAHAGIAN	16
2.5	Data PAUTAN MASUK: KOLEJ	18
2.6	Data PAUTAN MASUK : PERKHIDMATAN	20

DEFINISI Jumlah pautan masuk yang diterima laman web PTJ dari laman web luar UPM.

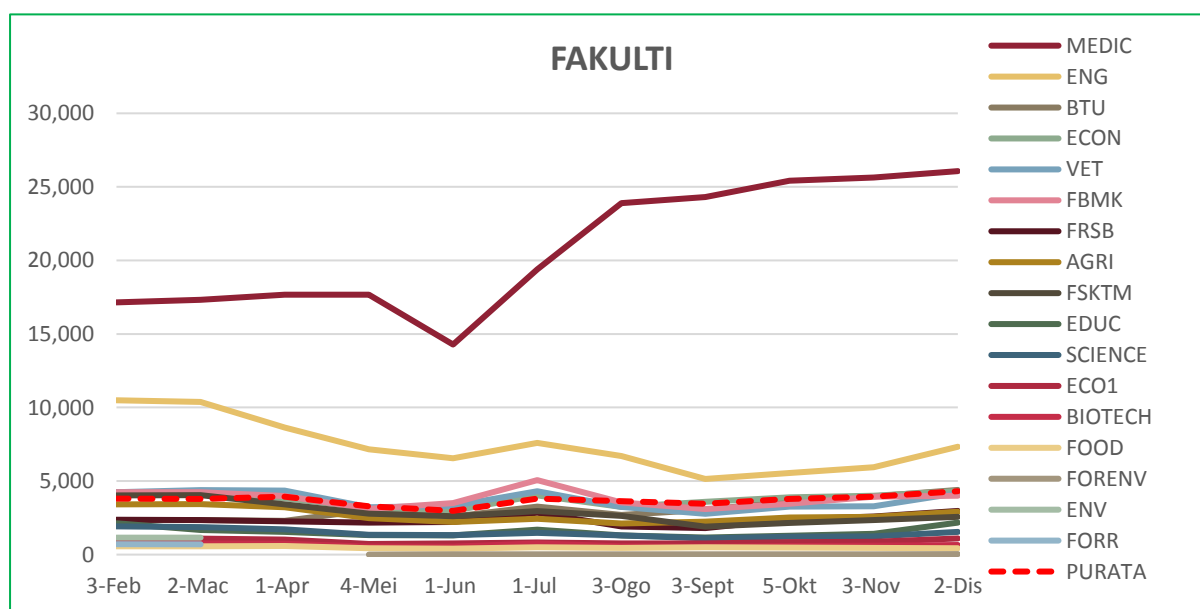
SUMBER DATA <https://www.ahrefs.com>

DATA PAUTAN MASUK: FAKULTI

■ Tertinggi dalam bulan semasa

ALAMAT URL	3-Feb	2-Mac	1-Apr	4-Mei	1-Jun	1-Jul	3-Ogo	3-Sep	5-Okt	3-Nov	2-Di
MEDIC	17,152	17,320	17,676	17,676	14,282	19,385	23,895	24,306	25,419	25,640	26,072
ENG	10,493	10,372	8,646	7,157	6,558	7,602	6,700	5,144	5,539	5,950	7,326
BTU	2,359	2,344	2,296	3,028	2,592	3,261	2,694	3,056	3,635	3,955	4,397
ECON	4,243	4,205	3,820	3,168	2,973	4,023	3,245	3,586	3,887	4,008	4,325
VET	4,248	4,387	4,345	3,220	3,300	4,313	3,231	2,776	3,254	3,280	4,184
FBMK	4,245	4,243	3,983	3,105	3,513	5,065	3,554	3,098	3,457	3,942	3,996
FRSB	2,378	2,344	2,253	2,174	2,225	2,857	1,922	1,803	2,397	2,597	2,969
AGRI	3,415	3,434	3,223	2,481	2,226	2,432	2,116	2,235	2,513	2,576	2,913
FSKTM	4,029	4,044	3,408	2,789	2,600	2,968	2,637	1,902	2,150	2,353	2,572
EDUC	2,142	1,672	1,550	1,320	1,294	1,697	1,315	1,162	1,293	1,422	2,176
SCIENCE	1,919	1,874	1,728	1,359	1,336	1,469	1,299	1,107	1,216	1,241	1,544
ECO1	1,058	1,090	1,027	724	756	826	754	768	841	876	1,100
BIOTECH	757	751	743	540	553	753	574	528	594	600	641
FOOD	559	558	587	434	407	496	461	492	474	461	426
FORENV	-	-	-	0	16	12	12	17	17	26	35
ENV	1,152	1,155	-	-	-	-	-	-	-	-	-
FORR	710	701	-	-	-	-	-	-	-	-	-
PURATA	3,804	3,781	3,949	3,278	2,975	3,811	3,627	3,465	3,779	3,928	4,312

JADUAL 2.1 (a): Data Pautan Masuk Fakulti



RAJAH 2.1: Data Pautan Masuk Fakulti

UNTUK RUJUKAN

JUMLAH KUMPULAN DOMAIN: FAKULTI

ALAMAT URL	GOV	EDU
MEDIC	0	36
ENG	3	23
BTU	1	2
ECON	0	45
VET	0	13
FBMK	1	16
FRSB	0	10
AGRI	1	20
FSKTM	0	10
EDUC	0	4
SCIENCE	0	8
ECO1	0	6
BIOTECH	0	1
FOOD	1	3
FORENV	0	0

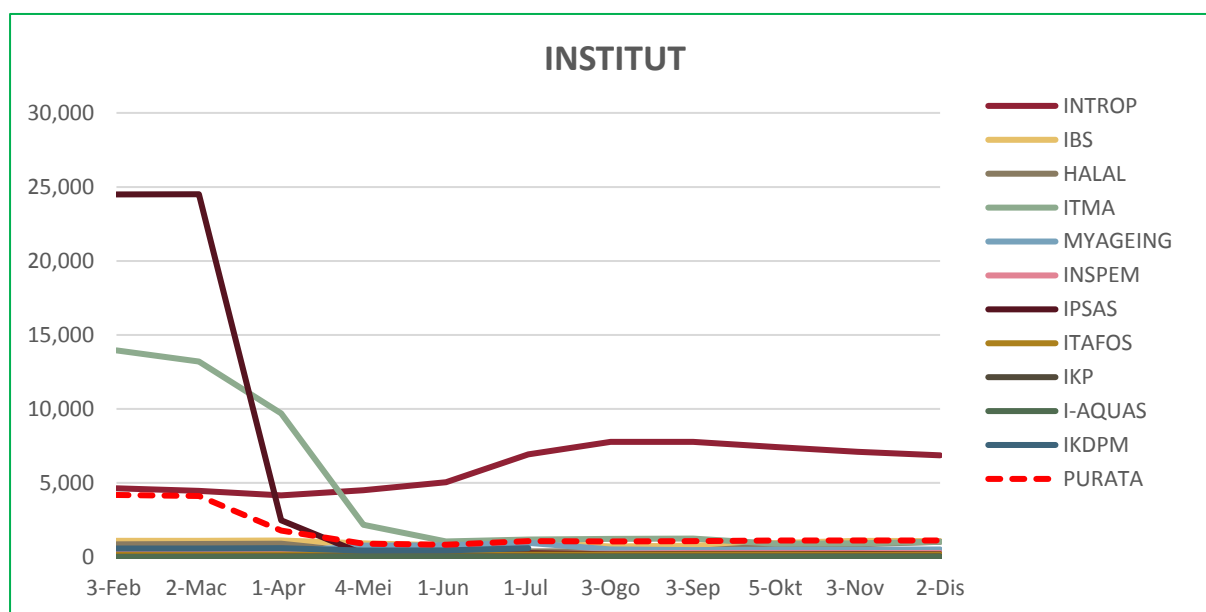
JADUAL 2.1 (b): Data Kumpulan Domain Fakulti

DATA PAUTAN MASUK: INSTITUT

■ Tertinggi dalam bulan semasa

ALAMAT URL	3-Feb	2-Mac	1-Apr	4-Mei	1-Jun	1-Jul	3-Ogo	3-Sep	5-Okt	3-Nov	2-Dis
INTROP	4,630	4,467	4,161	4,516	5,047	6,940	7,776	7,776	7,423	7,115	6,872
IBS	1,087	1,099	1,114	916	781	975	713	761	936	1,098	1,062
HALAL	858	884	906	316	357	384	381	409	746	863	1,025
ITMA	13,956	13,214	9,698	2,181	1,052	1,189	1,232	1,243	895	927	1,017
MYAGEING	51	210	303	771	780	956	515	467	482	491	518
INSPEM	263	246	263	201	206	215	225	268	275	274	268
IPSAS	24,487	24,505	2,466	213	217	240	193	208	195	207	184
ITAFOS	146	147	160	165	172	169	171	174	174	162	169
IKP	19	15	33	31	35	35	35	35	37	37	38
I-AQUAS	0	1	11	22	23	11	11	12	12	15	20
IKDPM	581	576	597	432	433	596	-	-	-	-	-
PURATA	4,189	4,124	1,792	888	828	1,065	1,051	1,067	1,118	1,119	1,117

JADUAL 2.2 (a): Data Pautan Masuk Institut



RAJAH 2.2: Data Pautan Masuk Institut

UNTUK RUJUKAN

JUMLAH KUMPULAN DOMAIN: INSTITUT

ALAMAT URL	GOV	EDU
INTROP	0	4
IBS	0	8
HALAL	0	3
ITMA	0	8
MYAGEING	1	3
INSPEM	0	4
IPSAS	0	2
ITAFOS	0	1
IKP	0	2
IKDPM	0	3
I-AQUAS	0	1

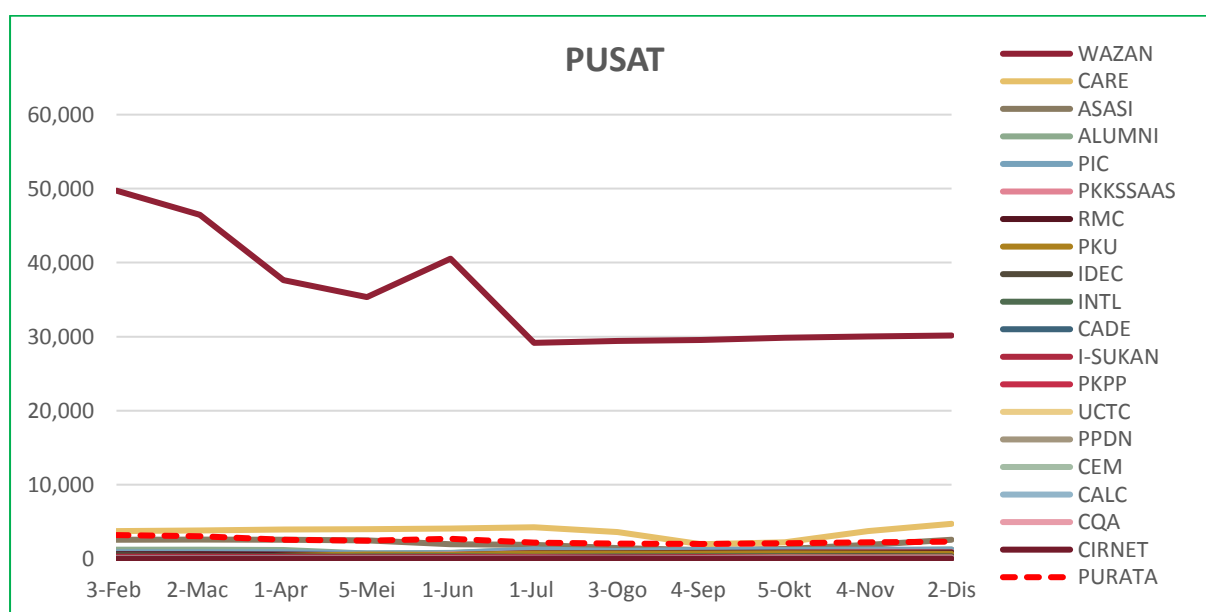
JADUAL 2.2 (b): Data Kumpulan Domain Institut

DATA PAUTAN MASUK: PUSAT

■ Tertinggi dalam bulan semasa

ALAMAT URL	3-Feb	2-Mac	1-Apr	5-Mei	1-Jun	1-Jul	3-Ogo	4-Sep	5-Okt	4-Nov	2-Dis
WAZAN	49,730	46,484	37,662	35,347	40,541	29,165	29,408	29,561	29,836	30,045	30,158
CARE	3,738	3,834	3,953	3,993	4,057	4,244	3,586	1,957	2,195	3,736	4,715
ASASI	2,580	2,584	2,577	2,486	1,964	1,868	1,442	1,172	1,329	1,864	2,562
ALUMNI	1,231	1,232	1,182	707	791	1,213	691	579	920	1,100	1,254
PIC	869	866	868	726	765	1,250	1,070	1,191	1,172	1,213	1,209
PKKSSAAS	378	379	392	401	582	766	168	357	828	943	940
RMC	621	616	572	506	494	757	757	792	820	841	849
PKU	117	119	407	565	540	695	700	719	733	703	678
IDEC	516	383	374	189	201	236	239	287	325	341	333
INTL	192	201	235	303	327	283	294	298	309	279	288
CADE	149	158	153	153	159	166	172	199	211	191	204
I-SUKAN	266	258	245	196	216	238	198	216	197	175	181
PKPP	78	80	98	87	93	96	78	113	140	131	127
UCTC	62	63	79	83	89	79	91	109	120	123	123
PPDN	20	20	30	44	48	72	81	88	103	121	158
CEM	46	47	51	83	99	117	78	78	78	78	70
CALC	38	40	46	49	53	71	65	68	74	72	69
CQA	16	15	27	36	39	37	37	39	41	40	40
CIRNET	7	9	20	28	30	33	33	29	29	29	31
PURATA	3,192	3,020	2,577	2,420	2,689	2,178	2,063	1,992	2,077	2,212	2,315

JADUAL 2.3 (a): Data Pautan Masuk Pusat



RAJAH 2.3: Data Pautan Masuk Pusat

UNTUK RUJUKAN

JUMLAH KUMPULAN DOMAIN: PUSAT

ALAMAT URL	GOV	EDU
WAZAN	0	1
CARE	0	0
ASASI	0	0
ALUMNI	0	0
PIC	0	4
PKKSSAAS	0	0
RMC	0	2
PKU	1	1
IDEC	0	3
INTL	2	5
CADE	0	4
I-SUKAN	0	1
PKPP	0	0
UCTC	0	1
PPDN	0	0
CEM	0	3
CALC	0	0
CQA	0	0
CIRNET	0	0

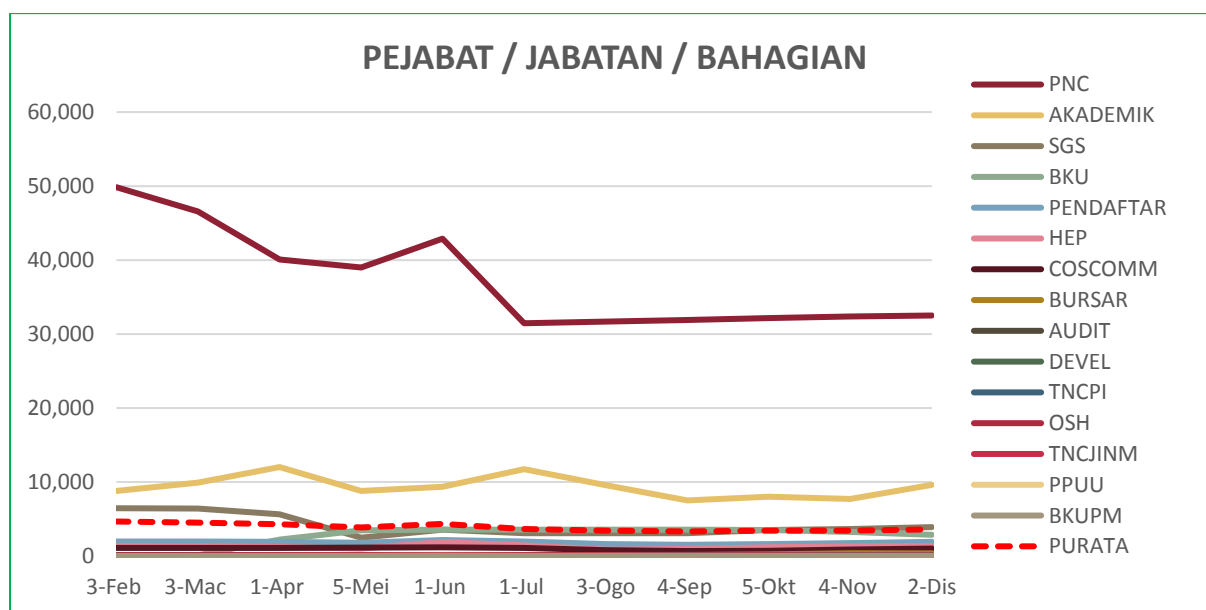
JADUAL 2.3 (b): Data Kumpulan Domain Pusat

DATA PAUTAN MASUK: PEJABAT / JABATAN / BAHAGIAN

■ Tertinggi dalam bulan semasa

ALAMAT URL	3-Feb	3-Mac	1-Apr	5-Mei	1-Jun	1-Jul	3-Ogo	4-Sep	5-Okt	4-Nov	2-Dis
PNC	49,847	46,574	40,099	38,995	42,896	31,467	31,694	31,903	32,176	32,380	32,512
AKADEMIK	8,800	9,953	12,035	8,821	9,372	11,741	9,597	7,530	8,051	7,737	9,616
SGS	6,474	6,431	5,633	2,494	3,579	3,095	3,090	3,105	3,520	3,642	3,908
BKU	95	130	2,242	3,469	3,582	3,562	3,574	3,570	3,525	3,286	2,879
PENDAFTAR	1,965	1,964	1,937	1,803	2,177	1,973	1,612	1,533	1,613	1,741	1952
HEP	1,362	1,327	1,239	1,003	1,902	1,456	869	961	1,209	1,314	1360
COSCOMM	1,099	1,097	1,100	1,136	1,190	1,126	821	689	725	880	1033
BURSAR	116	116	116	119	124	102	76	156	265	390	373
AUDIT	81	83	82	63	116	63	72	72	92	109	114
DEVEL	64	69	77	75	74	100	74	71	95	90	100
TNCPI	78	81	101	108	136	136	147	172	94	95	87
OSH	129	124	147	151	149	142	151	88	118	79	64
TNCJINM	37	37	43	52	54	45	46	54	56	56	53
PPUU	15	15	30	47	50	39	38	45	45	48	43
BKUPM	11	12	22	31	33	34	47	41	43	39	38
PURATA	4,678	4,534	4,327	3,891	4,362	3,672	3,461	3,333	3,442	3,459	3,609

JADUAL 2.4 (a): Data Pautan Masuk Pejabat / Jabatan / Bahagian



RAJAH 2.4: Data Pautan Masuk Pejabat / Jabatan / Bahagian

UNTUK RUJUKAN

JUMLAH KUMPULAN DOMAIN: PEJABAT / JABATAN / BAHAGIAN

ALAMAT URL	GOV	EDU
PNC	0	1
AKADEMIK	0	1
SGS	0	9
BKU	0	1
PENDAFTAR	0	1
HEP	0	1
COSCOMM	0	0
BURSAR	0	0
AUDIT	0	1
DEVEL	0	1
TNCPI	0	0
OSH	0	0
TNCJINM	0	0
PPUU	0	0
BKUPM	0	0

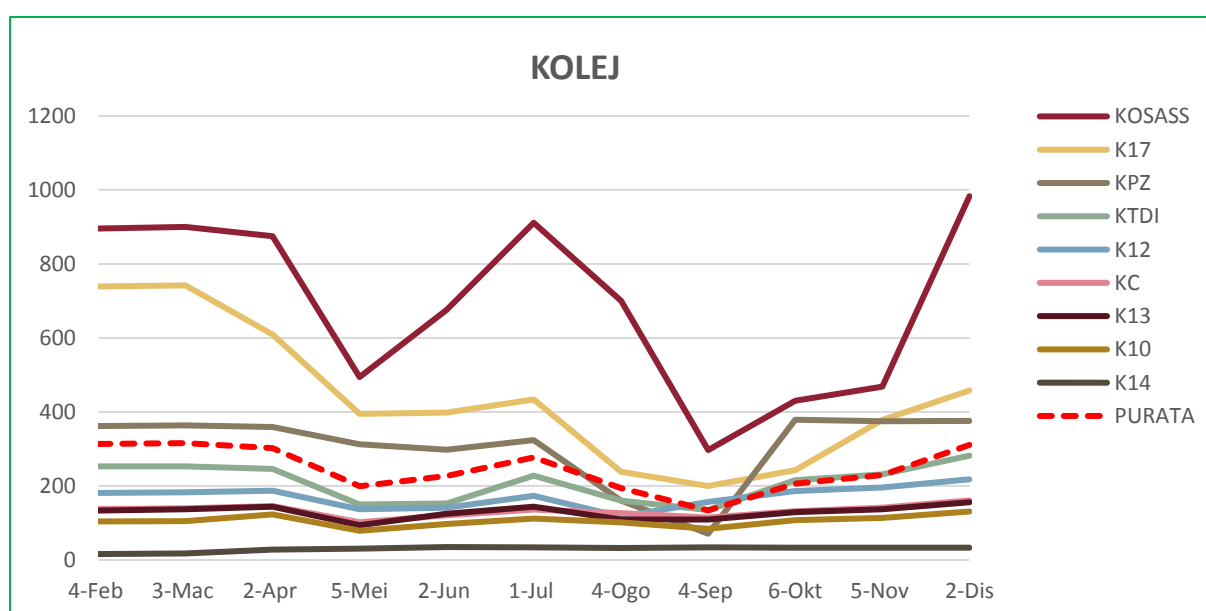
JADUAL 2.4 (b): Data Kumpulan Domain Pejabat / Jabatan / Bahagian

DATA PAUTAN MASUK: KOLEJ

■ Tertinggi dalam bulan semasa

ALAMAT URL	4-Feb	3-Mac	2-Apr	5-Mei	2-Jun	1-Jul	4-Ogo	4-Sep	6-Okt	5-Nov	2-Dis
KOSASS	896	900	875	494	676	911	700	297	430	468	983
K17	739	742	609	395	398	434	238	200	243	378	458
KPZ	362	364	359	313	298	324	160	71	379	375	376
KTDI	253	253	246	150	153	228	160	135	216	231	282
K12	181	183	187	137	141	173	117	157	186	196	218
KC	138	140	146	102	121	136	127	115	132	141	161
K13	134	137	144	94	125	144	109	109	129	137	156
K10	104	105	123	79	97	112	102	84	108	114	131
K14	16	18	28	31	35	34	32	34	33	33	33
PURATA	314	316	302	199	227	277	194	134	206	230	311

JADUAL 2.5 (a): Data Pautan Masuk Kolej



RAJAH 2.5: Data Pautan Masuk Kolej

UNTUK RUJUKAN

JUMLAH KUMPULAN DOMAIN: KOLEJ

ALAMAT URL	GOV	EDU
KOSASS	0	1
K17	0	0
KPZ	0	0
KTDI	0	0
K12	0	0
KC	0	1
K13	0	0
K10	0	0
K14	0	0

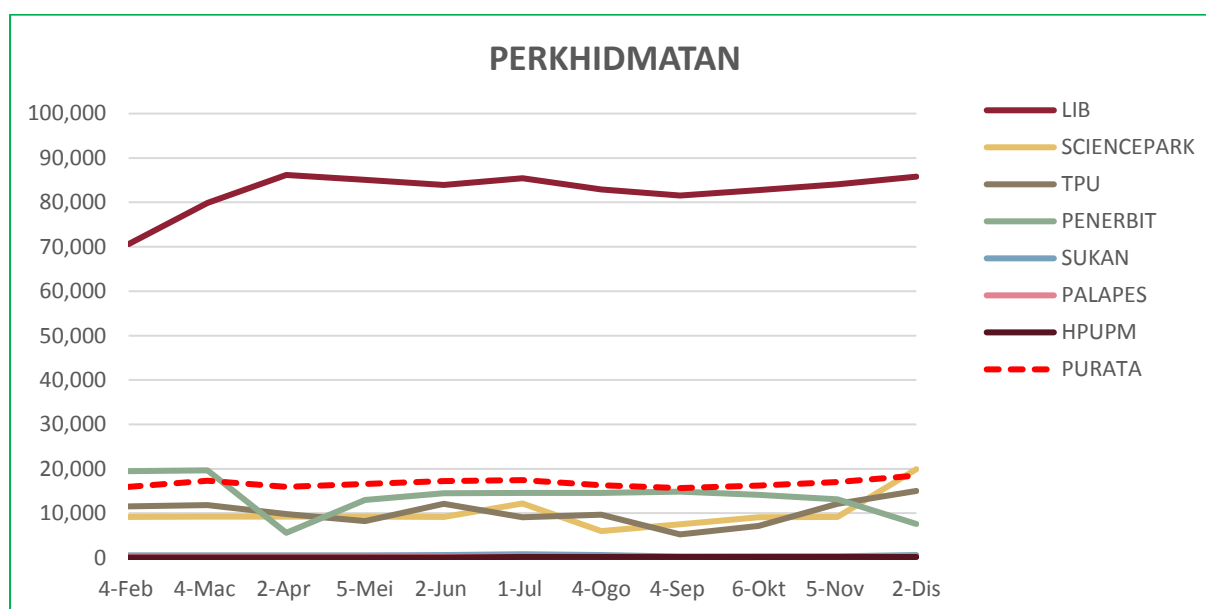
JADUAL 2.5 (b): Data Kumpulan Domain Kolej

DATA PAUTAN MASUK: PERKHIDMATAN

■ Tertinggi dalam bulan semasa

ALAMAT URL	4-Feb	4-Mac	2-Apr	5-Mei	2-Jun	1-Jul	4-Ogo	4-Sep	6-Okt	5-Nov	2-Dis
LIB	70,614	79,869	86,179	85,095	83,926	85,422	82,911	81,512	82,770	84,090	85,831
SCIENCEPARK	9,202	9,243	9,230	9,211	9,168	12,169	5,987	7,537	9,061	9,154	19,926
TPU	11,565	11,866	9,807	8,196	12,117	9,074	9,704	5,234	7,155	12,124	15,020
PENERBIT	19,446	19,660	5,594	13,001	14,503	14,559	14,555	14,874	14,151	13,155	7,602
SUKAN	495	497	510	516	558	770	600	249	268	282	562
PALAPES	152	156	172	170	205	245	135	137	157	164	248
HPUPM	16	12	37	38	44	129	133	135	146	144	146
PURATA	15,927	17,329	15,933	16,604	17,217	17,481	16,289	15,668	16,244	17,016	18,476

JADUAL 2.6 (a): Data Pautan Masuk Perkhidmatan



RAJAH 2.6: Data Pautan Masuk Perkhidmatan

UNTUK RUJUKAN

JUMLAH KUMPULAN DOMAIN: PERKHIDMATAN

ALAMAT URL	GOV	EDU
LIB	5	52
SCIENCEPARK	1	3
TPU	0	0
PENERBIT	1	5
SUKAN	0	0
PALAPES	0	0
HPUPM	0	0

JADUAL 2.6 (b): Data Kumpulan Domain Perkhidmatan

3.0

DATA LAMAN WEB PTJ: DOMAIN

DATA LAMAN WEB UPM: DOMAIN

14,259

MUKA SURAT

3.1	Data DOMAIN: FAKULTI	21
3.2	Data DOMAIN: INSTITUT	22
3.3	Data DOMAIN: PUSAT	23
3.4	Data DOMAIN: PEJABAT/ JABATAN/ BAHAGIAN	24
3.5	Data DOMAIN: KOLEJ	25
3.6	Data DOMAIN: PERKHIDMATAN	26

DEFINISI Jumlah domain luar yang membuat pautan masuk ke laman web PTJ.

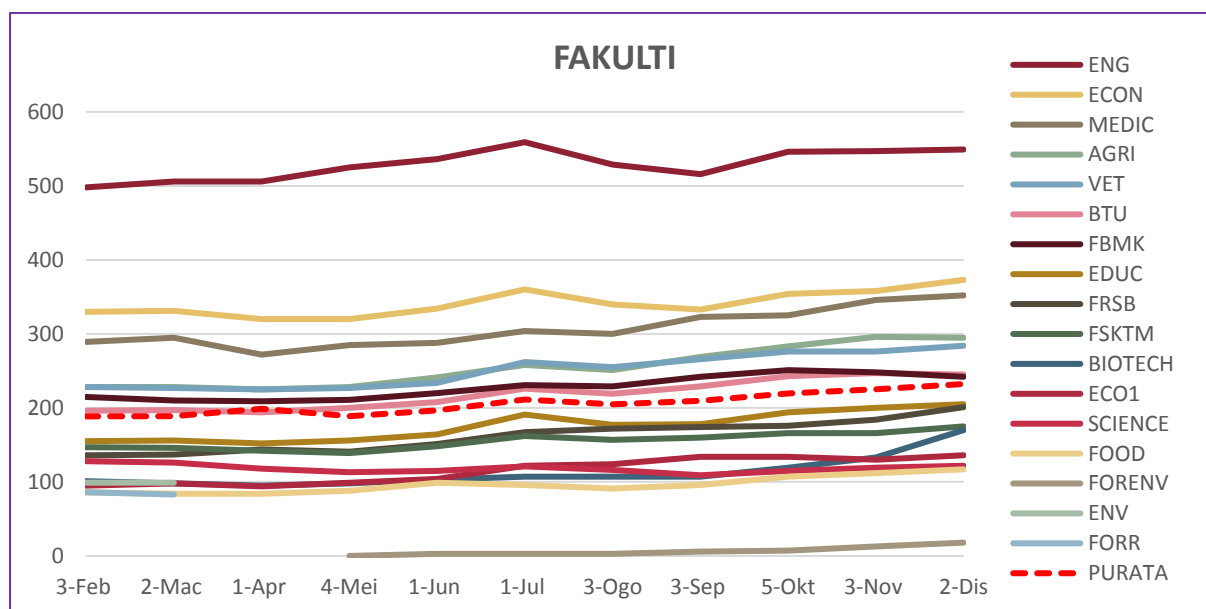
SUMBER DATA <https://www.ahrefs.com>

DATA DOMAIN: FAKULTI

■ Tertinggi dalam bulan semasa

ALAMAT URL	3-Feb	2-Mac	1-Apr	4-Mei	1-Jun	1-Jul	3-Ogo	3-Sep	5-Okt	3-Nov	2-Dis
ENG	498	506	506	525	536	559	529	516	546	547	549
ECON	330	331	320	320	334	360	340	333	354	358	373
MEDIC	289	295	272	285	288	304	300	323	325	346	352
AGRI	228	228	225	228	241	258	251	269	283	296	295
VET	228	227	225	227	234	262	255	266	276	276	284
BTU	196	197	194	200	208	226	219	229	243	247	245
FBMK	215	210	209	211	220	231	229	242	251	248	242
EDUC	155	156	152	156	164	191	177	178	194	200	205
FRSB	136	137	144	141	151	167	172	174	176	184	201
FSKTM	147	146	142	139	148	162	157	160	166	166	175
BIOTECH	101	98	95	98	103	107	107	107	119	133	170
ECO1	95	98	94	99	104	122	124	134	134	130	136
SCIENCE	128	126	118	113	115	121	116	109	115	119	122
FOOD	86	84	84	88	99	96	91	96	107	112	117
FORENV	-	-	-	0	3	3	3	6	7	13	18
ENV	99	99	-	-	-	-	-	-	-	-	-
FORR	86	83	-	-	-	-	-	-	-	-	-
PURATA	189	189	199	189	197	211	205	209	220	225	232

JADUAL 3.1: Data Domain Fakulti



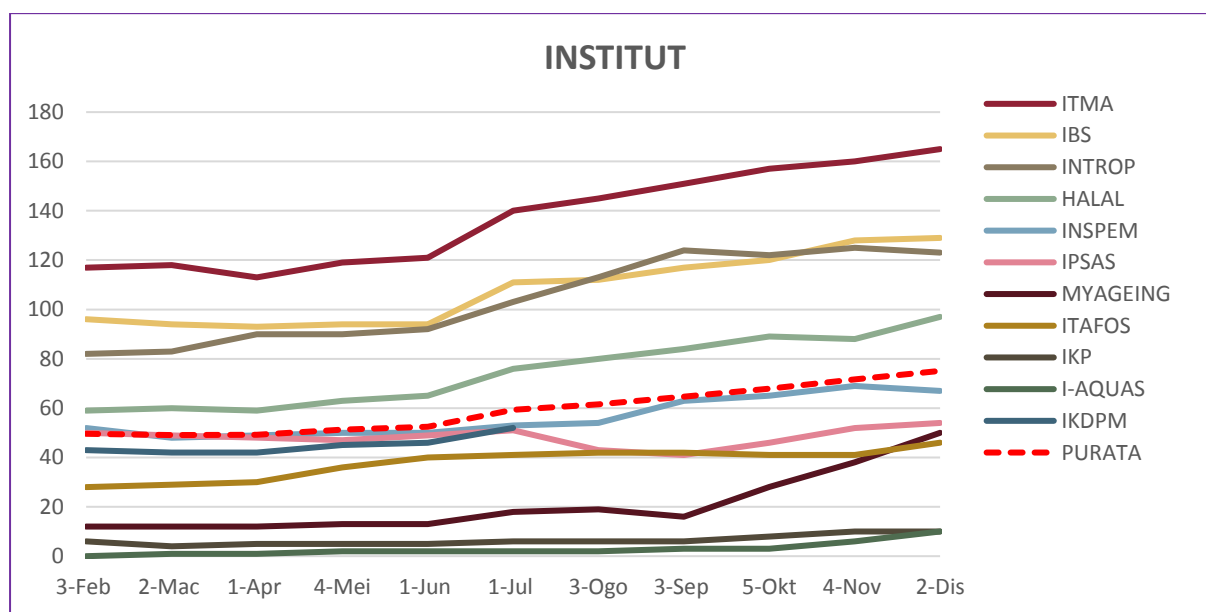
RAJAH 3.1: Data Domain Fakulti

DATA DOMAIN: INSTITUT

■ Tertinggi dalam bulan semasa

ALAMAT URL	3-Feb	2-Mac	1-Apr	4-Mei	1-Jun	1-Jul	3-Ogo	3-Sep	5-Okt	4-Nov	2-Dis
ITMA	117	118	113	119	121	140	145	151	157	160	165
IBS	96	94	93	94	94	111	112	117	120	128	129
INTROP	82	83	90	90	92	103	113	124	122	125	123
HALAL	59	60	59	63	65	76	80	84	89	88	97
INSPEM	52	48	49	50	50	53	54	63	65	69	67
IPSAS	50	49	48	47	49	51	43	41	46	52	54
MYAGEING	12	12	12	13	13	18	19	16	28	38	50
ITAFOS	28	29	30	36	40	41	42	42	41	41	46
IKP	6	4	5	5	5	6	6	6	8	10	10
I-AQUAS	0	1	1	2	2	2	2	3	3	6	10
IKDPM	43	42	42	45	46	52	-	-	-	-	-
PURATA	50	49	49	51	52	59	62	65	68	72	75

JADUAL 3.2: Data Domain Institut



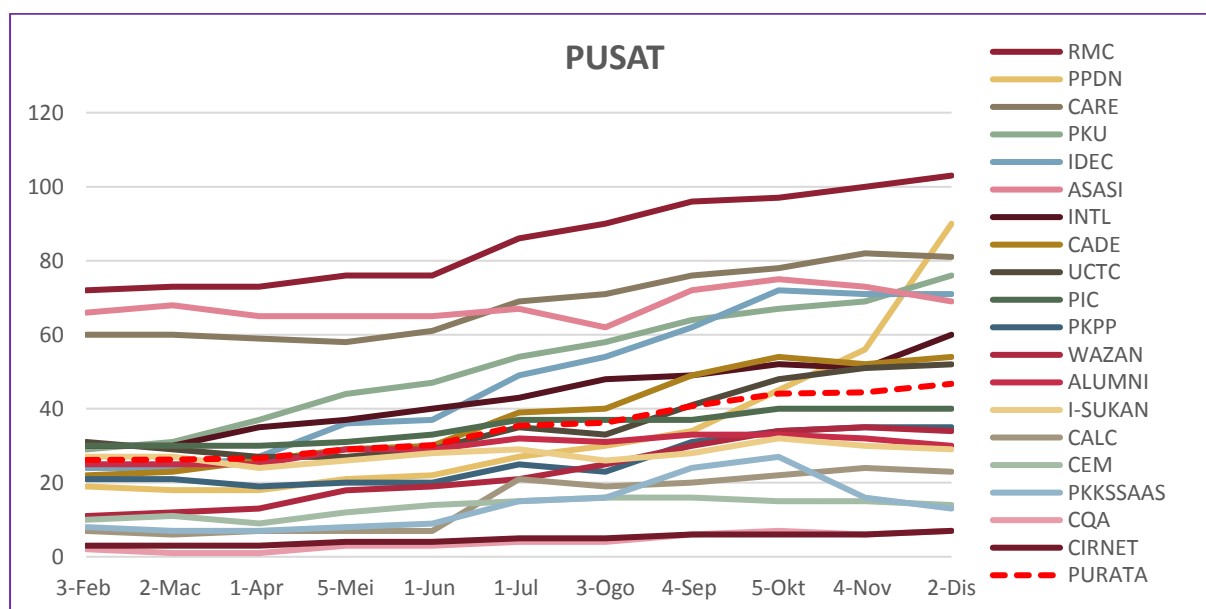
RAJAH 3.2: Data Domain Institut

DATA DOMAIN: PUSAT

■ Tertinggi dalam bulan semasa

ALAMAT URL	3-Feb	2-Mac	1-Apr	5-Mei	1-Jun	1-Jul	3-Ogo	4-Sep	5-Okt	4-Nov	2-Dis
RMC	72	73	73	76	76	86	90	96	97	100	103
PPDN	19	18	18	21	22	27	30	34	45	56	90
CARE	60	60	59	58	61	69	71	76	78	82	81
PKU	29	31	37	44	47	54	58	64	67	69	76
IDEC	24	24	27	36	37	49	54	62	72	71	71
ASASI	66	68	65	65	65	67	62	72	75	73	69
INTL	30	30	35	37	40	43	48	49	52	51	60
CADE	22	23	26	29	30	39	40	49	54	52	54
UCTC	31	29	27	27	29	35	33	41	48	51	52
PIC	30	30	30	31	33	37	37	37	40	40	40
PKPP	21	21	19	20	20	25	23	31	34	35	35
WAZAN	11	12	13	18	19	21	25	30	34	35	34
ALUMNI	25	25	25	29	29	32	31	33	33	32	30
I-SUKAN	27	27	24	26	28	29	26	28	32	30	29
CALC	7	6	7	7	7	21	19	20	22	24	23
CEM	10	11	9	12	14	15	16	16	15	15	14
PKKSSAAS	8	7	7	8	9	15	16	24	27	16	13
CQA	2	1	1	3	3	4	4	6	7	6	7
CIRNET	3	3	3	4	4	5	5	6	6	6	7
PURATA	26	26	27	29	30	35	36	41	44	44	47

JADUAL 3.3: Data Domain Pusat



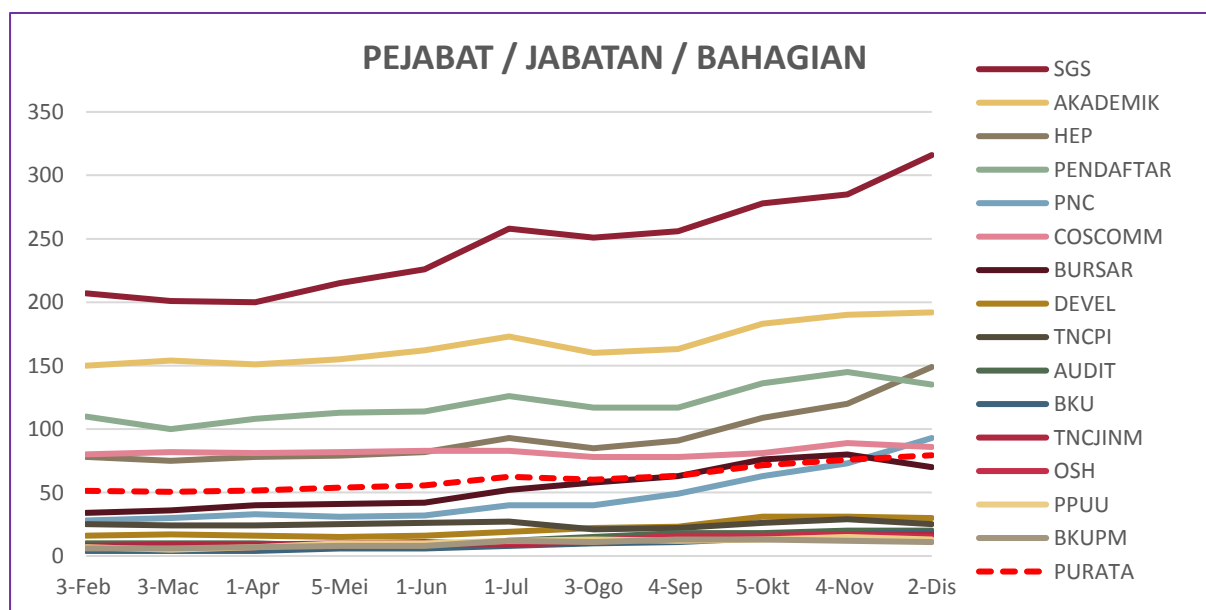
RAJAH 3.3: Data Domain Pusat

DATA DOMAIN: PEJABAT / JABATAN / BAHAGIAN

■ Tertinggi dalam bulan semasa

ALAMAT URL	3-Feb	3-Mac	1-Apr	5-Mei	1-Jun	1-Jul	3-Ogo	4-Sep	5-Okt	4-Nov	2-Dis
SGS	207	201	200	215	226	258	251	256	278	285	316
AKADEMIK	150	154	151	155	162	173	160	163	183	190	192
HEP	78	75	78	79	82	93	85	91	109	120	149
PENDAFTAR	110	100	108	113	114	126	117	117	136	145	135
PNC	28	30	33	31	32	40	40	49	63	73	93
COSCOMM	80	82	81	82	83	83	78	78	81	89	86
BURSAR	34	36	40	41	42	52	58	63	76	80	70
DEVEL	16	17	16	15	16	19	22	23	31	31	30
TNCPI	25	24	24	25	26	27	21	22	26	29	25
AUDIT	10	10	10	8	8	12	15	18	18	20	20
BKU	4	4	4	6	6	8	10	11	14	17	19
TNCJINM	8	9	9	10	11	9	11	15	15	16	17
OSH	6	6	7	9	9	11	12	16	16	17	15
PPUU	7	5	7	10	10	12	13	12	13	15	13
BKUPM	6	6	7	8	8	12	11	13	13	12	11
PURATA	51	51	52	54	56	62	60	63	71	76	79

JADUAL 3.4: Data Domain Pejabat / Jabatan / Bahagian



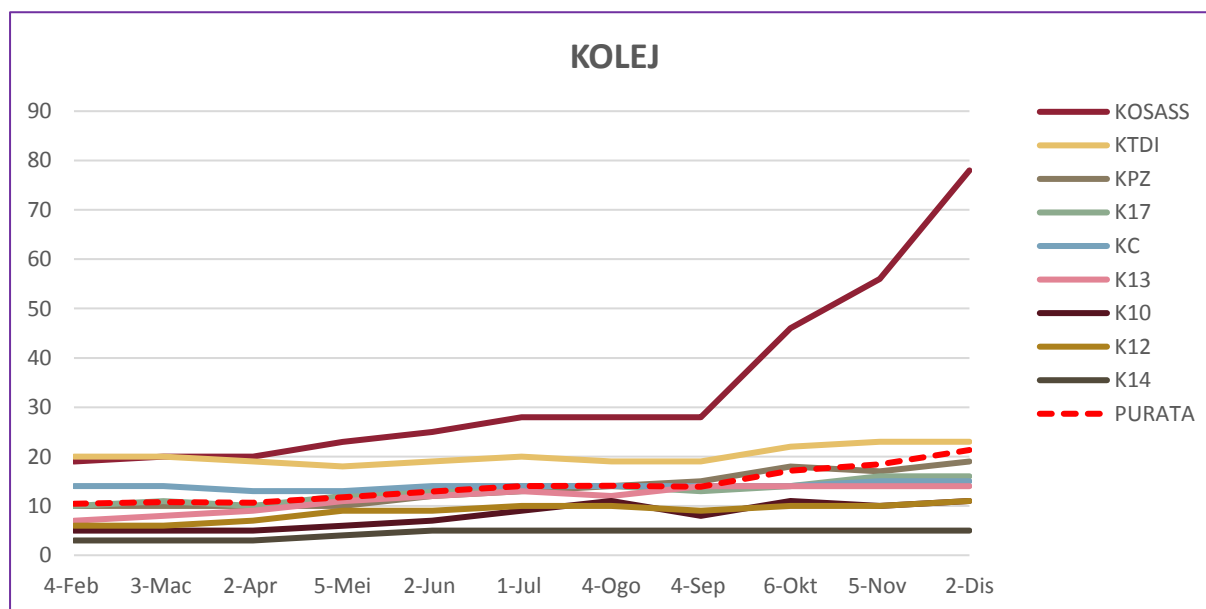
RAJAH 3.4: Data Domain Pejabat / Jabatan / Bahagian

DATA DOMAIN: KOLEJ

■ Tertinggi dalam bulan semasa

ALAMAT URL	4-Feb	3-Mac	2-Apr	5-Mei	2-Jun	1-Jul	4-Ogo	4-Sep	6-Okt	5-Nov	2-Dis
KOSASS	19	20	20	23	25	28	28	28	46	56	78
KTDI	20	20	19	18	19	20	19	19	22	23	23
KPZ	10	10	10	10	12	13	14	15	18	17	19
K17	10	11	10	12	13	14	14	13	14	16	16
KC	14	14	13	13	14	14	14	14	14	15	15
K13	7	8	9	11	12	13	12	14	14	14	14
K10	5	5	5	6	7	9	11	8	11	10	11
K12	6	6	7	9	9	10	10	9	10	10	11
K14	3	3	3	4	5	5	5	5	5	5	5
PURATA	10	11	11	12	13	14	14	14	17	18	21

JADUAL 3.5: Data Domain Kolej



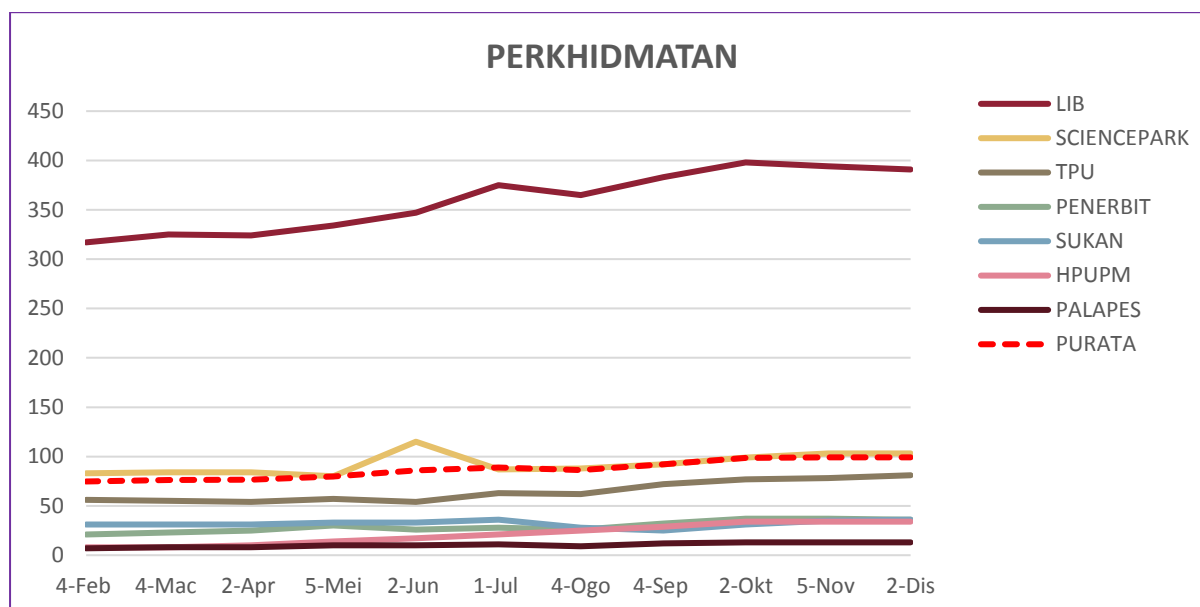
RAJAH 3.5: Data Domain Kolej

DATA DOMAIN: PERKHIDMATAN

■ Tertinggi dalam bulan semasa

ALAMAT URL	4-Feb	4-Mac	2-Apr	5-Mei	2-Jun	1-Jul	4-Ogo	4-Sep	2-Okt	5-Nov	2-Dis
LIB	317	325	324	334	347	375	365	383	398	394	391
SCIENCEPARK	83	84	84	80	115	87	88	92	99	103	103
TPU	56	55	54	57	54	63	62	72	77	78	81
PENERBIT	21	23	25	30	26	28	26	32	37	37	36
SUKAN	31	31	31	33	33	36	28	25	31	35	36
HPUPM	8	8	10	14	17	21	25	29	34	34	34
PALAPES	7	8	8	10	10	11	9	12	13	13	13
PURATA	75	76	77	80	86	89	86	92	98	99	99

JADUAL 3.6: Data Domain Perkhidmatan



RAJAH 3.6: Data Domain Perkhidmatan

4.0

DATA LAMAN WEB PTJ: ARTIKEL & BERITA

DATA LAMAN WEB UPM: ARTIKEL

90

DATA LAMAN WEB UPM: BERITA

2,740

MUKA SURAT

4.1	Data ARTIKEL & BERITA: FAKULTI	28
4.2	Data ARTIKEL & BERITA: INSTITUT	29
4.3	Data ARTIKEL & BERITA: PUSAT	30
4.4	Data ARTIKEL & BERITA: PEJABAT / JABATAN / BAHAGIAN	31
4.5	Data ARTIKEL & BERITA: KOLEJ	32
4.6	Data ARTIKEL & BERITA: PERKHIDMATAN	33

DEFINISI JUMLAH artikel dan berita yang dihasilkan dan dipaparkan di laman web PTJ.

SUMBER DATA <https://www.upm.edu.my/webinfo>

DATA ARTIKEL & BERITA: FAKULTI

■ Tertinggi dalam bulan semasa

ARTIKEL

ALAMAT URL	3-Feb	2-Mac	1-Apr	4-Mei	3-Jun	2-Jul	4-Ogo	1-Sep	2-Okt	2-Nov	1-Dis
ECO1	150	150	154	154	162	174	180	180	198	200	210
BTU	64	72	86	92	96	102	106	106	106	106	106
VET	36	38	38	46	52	56	56	54	56	58	58
ENG	32	32	32	34	36	36	36	36	36	36	36
FBMK	12	14	14	18	20	20	20	20	24	24	30
EDUC	16	16	16	16	16	16	16	18	22	22	30
BIOTECH	24	24	24	24	24	24	24	24	24	24	24
MEDIC	18	18	20	20	22	22	24	24	24	24	24
FSKTM	12	12	12	12	12	12	12	12	14	14	16
FRSB	8	8	8	8	10	12	12	12	12	14	16
ECON	12	12	12	12	12	12	12	12	12	12	14
FOOD	12	12	12	12	12	12	12	12	12	12	14
AGRI	8	8	8	10	12	10	10	10	10	10	10
SCIENCE	4	4	4	4	10	4	6	6	6	6	8
FORENV	-	-	-	2	4	2	2	4	4	4	4
ENV	10	10	-	-	-	-	-	-	-	-	-
FORR	2	2	-	-	-	-	-	-	-	-	-
PURATA	26	27	31	31	33	34	35	35	37	38	40

JADUAL 4.1 (a): Data Artikel Fakulti

BERITA

ALAMAT URL	3-Feb	2-Mac	2-Apr	4-Mei	3-Jun	2-Jul	4-Ogo	1-Sep	1-Okt	2-Nov	1-Dis
BTU	656	676	688	690	694	696	700	708	708	714	728
ECO1	352	432	436	438	438	438	438	438	446	450	452
ENG	316	318	332	334	334	342	348	348	350	350	350
VET	228	242	248	254	268	290	290	292	304	306	320
MEDIC	144	154	168	180	186	192	228	240	256	272	280
SCIENCE	216	218	222	226	228	232	234	234	234	234	234
BIOTECH	230	230	230	232	232	232	232	232	232	232	234
AGRI	162	168	158	170	170	178	182	182	182	182	188
EDUC	138	138	138	138	138	138	142	142	146	148	148
FBMK	98	98	106	112	116	118	118	118	118	118	124
ECON	114	114	116	116	116	118	118	118	118	118	120
FSKTM	78	84	84	84	84	84	90	92	94	94	100
FRSB	72	72	72	72	76	72	72	72	74	78	80
FOOD	64	64	64	64	72	64	64	64	70	74	78
FORENV	-	-	-	42	64	44	48	48	48	48	50
ENV	76	76	-	-	-	-	-	-	-	-	-
FORR	42	42	-	-	-	-	-	-	-	-	-
PURATA	187	195	219	210	214	216	220	222	225	228	232

JADUAL 4.1 (b): Data Berita Fakulti

DATA ARTIKEL & BERITA: INSTITUT

■ Tertinggi dalam bulan semasa

ARTIKEL

ALAMAT URL	3-Feb	2-Mac	1-Apr	4-Mei	3-Jun	2-Jul	4-Ogo	1-Sep	2-Okt	2-Nov	1-Dis
IPSAS	42	48	48	52	58	64	64	66	72	72	72
INSPERM	8	14	16	18	18	22	22	22	22	24	28
HALAL	26	26	26	26	26	26	26	26	26	26	26
INTROP	14	14	16	16	16	18	20	22	22	24	24
ITMA	30	34	36	38	40	44	44	46	46	46	18
ITAFOS	8	8	8	8	8	8	12	12	14	16	18
IBS	16	16	16	16	18	16	16	16	16	16	16
MYAGEING	8	8	8	10	12	16	16	16	16	16	16
I-AQUAS	2	2	8	8	8	12	12	12	12	12	12
IKP	4	4	4	4	4	4	4	4	6	6	6
IKDPM	26	26	26	26	26	28	-	-	-	-	-
PURATA	17	18	19	20	21	23	23.6	24	25	26	24

JADUAL 4.2 (a): Data Artikel Institut

BERITA

ALAMAT URL	3-Feb	2-Mac	2-Apr	4-Mei	3-Jun	2-Jul	4-Ogo	1-Sep	1-Okt	2-Nov	1-Dis
INSPERM	150	156	156	160	162	158	160	162	164	172	174
ITMA	142	142	144	144	144	146	148	148	148	150	152
IBS	32	116	122	122	122	122	124	126	136	138	148
ITAFOS	100	100	100	100	100	100	102	102	102	102	102
IPSAS	82	90	90	90	90	90	90	94	98	98	98
INTROP	78	78	78	78	78	78	78	82	82	92	94
IKP	58	58	60	60	60	60	62	62	64	70	70
HALAL	52	52	52	52	52	52	52	52	52	52	58
MYAGEING	40	40	40	40	40	38	38	38	42	42	46
I-AQUAS	2	2	8	8	8	8	8	8	8	8	8
IKDPM	72	72	72	72	74	80	-	-	-	-	-
PURATA	73	82	84	84	85	85	86	87	90	92	95

JADUAL 4.2 (b): Data Berita Institut

DATA ARTIKEL & BERITA: PUSAT

■ Tertinggi dalam bulan semasa

ARTIKEL

ALAMAT URL	3-Feb	2-Mac	2-Apr	4-Mei	3-Jun	2-Jul	4-Ogo	1-Sep	2-Okt	2-Nov	1-Dis
PKPP	94	94	96	96	96	96	96	96	96	96	96
PKU	72	72	72	72	72	72	74	76	78	78	78
INTL	58	62	62	66	68	62	62	56	60	60	64
IDEC	34	36	36	40	40	44	46	46	46	46	50
RMC	22	24	26	28	30	32	36	34	38	40	42
CIRNET	34	34	34	34	34	34	34	34	34	34	34
CEM	34	34	34	34	34	34	34	34	34	34	34
PIC	22	28	28	28	30	30	34	34	34	34	34
ALUMNI	20	22	22	22	22	22	22	22	22	26	26
ASASI	20	20	22	22	22	22	22	22	22	22	24
CARE	2	2	2	2	6	12	14	14	18	20	22
I-SUKAN	12	12	12	14	14	16	18	18	18	18	20
WAZAN	18	18	18	18	18	18	18	18	18	18	18
CQA	16	16	16	16	16	16	16	16	16	16	16
PKKSSAAS	14	14	14	14	14	16	16	16	16	16	16
PPDN	14	14	14	14	14	14	16	16	16	16	16
CALC	12	12	12	12	12	12	12	12	12	12	12
UCTC	2	2	6	6	10	6	6	6	6	6	6
CADE	2	2	2	2	2	2	2	2	2	2	2
PURATA	26	27	28	28	29	29	30	30	31	31	32

JADUAL 4.3 (a): Data Artikel Pusat

BERITA

ALAMAT URL	3-Feb	2-Mac	2-Apr	4-Mei	3-Jun	2-Jul	4-Ogo	1-Sep	1-Okt	2-Nov	1-Dis
WAZAN	1,688	296	300	312	320	326	330	348	350	354	362
IDEC	286	288	288	288	292	300	302	304	306	310	314
PKKSSAAS	210	210	214	214	214	222	222	224	224	230	230
ASASI	176	176	180	180	182	188	188	190	192	192	200
INTL	142	142	150	152	152	152	152	158	160	160	164
PKU	154	152	154	154	154	156	156	156	160	160	160
UCTC	142	142	130	142	142	144	142	144	144	144	154
I-SUKAN	128	130	130	130	130	136	140	144	146	146	148
RMC	130	130	142	146	146	146	146	146	146	146	146
PIC	114	118	120	120	126	130	132	132	132	138	138
PKPP	106	106	106	118	124	128	128	128	128	128	130
ALUMNI	118	124	124	124	128	124	124	124	124	126	130
CIRNET	108	108	108	108	108	108	108	108	108	108	108
CALC	76	80	80	82	84	84	88	94	102	108	106
CARE	96	96	96	96	96	102	102	102	102	102	102
CQA	90	90	90	90	90	90	90	90	90	90	90
CEM	64	64	64	64	64	64	64	64	64	64	64
CADE	42	44	44	44	44	44	44	44	46	48	50
PPDN	14	14	14	14	14	14	14	14	14	14	14
PURATA	204	132	133	136	137	140	141	143	144	146	148

JADUAL 4.3 (b): Data Berita Pusat

DATA ARTIKEL & BERITA: PEJABAT / JABATAN / BAHAGIAN

■ Tertinggi dalam bulan semasa

ARTIKEL

ALAMAT URL	3-Feb	2-Mac	2-Apr	4-Mei	3-Jun	2-Jul	4-Ogo	1-Sep	2-Okt	2-Nov	1-Dis
HEP	84	84	84	96	96	104	116	120	122	134	134
AUDIT	36	42	46	52	56	60	62	64	64	64	68
PNC	34	34	40	46	52	54	54	54	54	54	56
PENDAFTAR	16	18	22	24	26	26	26	32	32	38	42
TNCJINM	34	36	36	36	36	36	36	36	36	36	36
BKU	28	28	28	28	28	28	30	30	30	30	30
BURSAR	22	22	22	22	22	24	24	24	24	26	26
SGS	20	20	20	20	20	22	22	24	24	24	24
OSH	22	22	22	22	22	22	22	22	22	22	22
COSCOMM	22	22	22	22	22	22	22	22	22	22	22
BKUPM	12	12	12	12	16	18	18	18	18	20	20
DEVEL	8	8	8	12	12	12	12	12	12	12	12
AKADEMIK	8	8	8	8	8	8	12	12	12	12	12
PPUU	10	10	10	10	10	10	10	10	10	10	10
TNCPI	8	8	8	8	8	8	8	8	8	8	10
PURATA	24	25	26	28	29	30	32	33	33	34	35

JADUAL 4.4 (a): Data Artikel Pejabat / Jabatan / Bahagian

BERITA

ALAMAT URL	3-Feb	2-Mac	2-Apr	4-Mei	3-Jun	2-Jul	4-Ogo	1-Sep	2-Okt	2-Nov	1-Dis
SGS	274	274	274	274	274	288	286	294	300	306	306
HEP	186	188	188	204	206	220	232	236	248	268	268
PNC	216	216	218	224	230	232	232	234	234	234	234
PENDAFTAR	158	158	162	162	162	162	168	168	172	176	184
COSCOMM	94	94	106	136	136	136	136	136	136	136	144
AUDIT	98	102	102	114	116	120	124	126	126	130	134
BURSAR	66	74	74	78	78	78	88	88	96	100	100
DEVEL	92	92	92	92	92	92	92	94	94	94	94
TNCJINM	88	94	94	108	114	116	118	120	122	124	88
AKADEMIK	74	74	76	80	80	80	82	82	84	84	84
TNCPI	64	64	64	64	64	64	66	72	74	76	76
BKU	68	72	72	72	72	72	72	72	72	72	72
BKUPM	30	30	30	30	38	42	42	46	46	48	48
OSH	38	38	38	38	38	38	38	38	38	38	38
PPUU	12	12	12	12	12	12	12	12	12	12	12
PURATA	104	105	107	113	114	117	119	121	124	127	125

JADUAL 4.4 (b): Data Berita Pejabat / Jabatan / Bahagian

DATA ARTIKEL & BERITA: KOLEJ

■ Tertinggi dalam bulan semasa

ARTIKEL

ALAMAT URL	3-Feb	2-Mac	2-Apr	4-Mei	3-Jun	2-Jul	4-Ogo	1-Sep	2-Okt	2-Nov	1-Dis
K10	14	14	14	14	18	14	14	14	14	22	30
KPZ	18	18	18	18	20	18	18	18	18	18	28
KTDI	10	10	10	10	14	20	20	20	20	20	26
K17	22	22	22	22	22	24	24	24	24	24	24
KC	18	18	20	20	20	20	20	22	22	22	22
KOSASS	20	20	20	20	20	20	20	20	20	20	20
K13	12	12	14	14	14	14	13	16	16	16	16
K12	6	10	10	10	10	10	10	10	10	10	12
K14	6	8	8	8	8	8	8	8	8	8	8
PURATA	14	15	15	15	16	16	16	17	17	18	21

JADUAL 4.5 (a): Data Artikel Kolej

BERITA

ALAMAT URL	3-Feb	2-Mac	2-Apr	4-Mei	3-Jun	2-Jul	4-Ogo	1-Sep	2-Okt	2-Nov	1-Dis
K10	196	224	228	228	228	234	234	234	234	234	236
K12	158	166	172	178	178	182	182	192	200	200	200
K14	140	146	148	148	148	148	148	150	150	154	154
KTDI	90	90	90	90	94	94	98	98	98	138	152
KOSASS	82	82	82	84	84	84	84	84	86	86	88
K17	62	62	62	62	62	62	64	64	66	66	66
KPZ	42	42	42	42	42	42	42	42	42	42	56
K13	38	50	54	54	54	54	54	54	54	54	54
KC	28	48	30	30	30	30	30	30	30	30	30
PURATA	93	101	101	102	102	103	104	105	107	112	115

JADUAL 4.5 (b): Data Berita Kolej

DATA ARTIKEL & BERITA: PERKHIDMATAN

■ Tertinggi dalam bulan semasa

ARTIKEL

ALAMAT URL	3-Feb	2-Mac	2-Apr	4-Mei	3-Jun	2-Jul	4-Ogo	1-Sep	2-Okt	2-Nov	1-Dis
HPUPM	16	16	12	38	62	88	100	100	104	110	126
SCIENCEPARK	80	86	86	86	92	96	96	96	96	102	102
LIB	18	30	44	50	78	62	62	62	62	62	62
TPU	18	18	18	18	18	18	18	18	18	22	28
PENERBIT	12	12	20	22	22	22	22	24	24	24	24
SUKAN	6	6	6	6	6	6	6	6	6	6	12
PALAPES	2	2	2	2	2	2	2	2	2	2	2
PURATA	22	24	27	32	40	42	44	44	45	47	51

JADUAL 4.6 (a): Data Artikel Perkhidmatan

BERITA

ALAMAT URL	3-Feb	2-Mac	2-Apr	4-Mei	3-Jun	2-Jul	4-Ogo	1-Sep	2-Okt	2-Nov	1-Dis
SCIENCEPARK	206	212	218	218	224	228	228	236	236	242	246
LIB	92	118	122	132	142	152	158	160	174	180	186
TPU	120	120	120	120	120	120	120	122	122	130	132
PENERBIT	108	108	110	114	114	114	116	116	116	116	116
HPUPM	20	30	42	48	50	54	56	58	80	90	90
SUKAN	44	44	44	44	44	44	44	44	44	44	50
PALAPES	6	6	6	6	6	6	6	6	6	6	6
PURATA	85	91	95	97	100	103	104	106	111	115	118

JADUAL 4.6 (b): Data Berita Perkhidmatan

5.0

DATA LAMAN WEB PTJ: MEDIA SOSIAL (*FOLLOWER*)

DATA LAMAN WEB UPM: MEDIA SOSIAL		223,223
FACEBOOK (FAN PAGE)	INSTAGRAM	TWITTER
187,959	20,200	15,064

MUKA SURAT

5.1	Data MEDIA SOSIAL: FAKULTI	35
5.2	Data MEDIA SOSIAL: INSTITUT	36
5.3	Data MEDIA SOSIAL: PUSAT	37
5.4	Data MEDIA SOSIAL: PEJABAT / JABATAN / BAHAGIAN	38
5.5	Data MEDIA SOSIAL: KOLEJ	39
5.6	Data MEDIA SOSIAL: PERKHIDMATAN	39

DEFINISI Jumlah bilangan pengikut (follower) bagi media sosial rasmi PTJ.

SUMBER DATA **Facebook, Instagram, Twitter**

NOTA 1. Statistik hanya melibatkan bilangan *FOLLOWER* sahaja.
 2. Bagi FACEBOOK, perlu diwujudkan menggunakan kategori FAN PAGE untuk dapatkan FOLLOWER.

DATA MEDIA SOSIAL (*FOLLOWER*): FAKULTI

■ Tertinggi dalam bulan semasa

■ Tertinggi dalam media sosial

(T) – Tiada

	FACEBOOK (FAN PAGE)	INSTAGRAM	TWITTER	
ALAMAT URL	7-Dis	7-Dis	7-Dis	JUMLAH
BTU	12,111	2,513	T	14,624
AGRI	3,601	891	165	4,657
ECON	3,862	338	T	4,200
ENG	3,523	354	T	3,877
MEDIC	2,655	T	T	2,655
FOOD	2,390	16	T	2,406
ECO1	2,016	148	14	2,178
FORENV	1,595	234	192	2,021
BIOTECH	1,577	T	T	1,577
FSKTM	1,458	T	T	1,458
FBMK	1,363	T	T	1,363
SCIENCE	1,002	T	T	1,002
FRSB	859	T	T	859
EDUC	174	T	T	174
VET	T	T	T	0

JADUAL 5.1: Data Media Sosial (*Follower*) Fakulti

DATA MEDIA SOSIAL (*FOLLOWER*): INSTITUT

■ Tertinggi dalam bulan semasa

■ Tertinggi dalam media sosial

(T) – Tiada

	FACEBOOK (FAN PAGE)	INSTAGRAM	TWITTER	
ALAMAT URL	7-Dis	7-Dis	7-Dis	JUMLAH
INSPEM	3,385	626	121	4,132
HALAL	2,913	187	T	3,100
MYAGEING	852	1,722	T	2,574
IPSAS	897	89	T	986
INTROP	750	192	17	959
I-AQUAS	831	3	2	836
IBS	696	117	T	813
ITMA	559	202	T	761
ITAFOS	531	38	T	569
IKP	65	7	T	72

JADUAL 5.2: Data Media Sosial (*Follower*) Institut

DATA MEDIA SOSIAL (*FOLLOWER*): PUSAT

■ Tertinggi dalam bulan semasa

■ Tertinggi dalam media sosial

(T) – Tiada

	FACEBOOK (FAN PAGE)	INSTAGRAM	TWITTER	
ALAMAT URL	7-Dis	7-Dis	7-Dis	JUMLAH
ALUMNI	16,711	3,945	527	21,183
I-SUKAN	9,785	872	T	10,657
ASASI	3,869	2,321	216	6,406
PKPP	5,365	906	225	6,496
INTL	2,505	2,635	T	5,140
PIC	4,693	371	T	5,064
CEM	4,134	T	T	4,134
UCTC	3,882	413	T	4,295
PKU	2,045	220	1,076	3,341
WAZAN	3,582	625	146	4,353
CARE	2,551	T	T	2,551
CADE	1,269	461	T	1,730
PKKSSAA	1,590	338	6	1,934
RMC	1,416	84	T	1,500
IDEC	1,028	122	4	1,154
CALC	1,136	T	T	1,136
CQA	357	103	T	460
PPDN	182	T	25	207
CIRNET	104	T	T	104

JADUAL 5.3: Data Media Sosial (*Follower*) Pusat

DATA MEDIA SOSIAL (*FOLLOWER*): PEJABAT / JABATAN / BAHAGIAN

■ Tertinggi dalam bulan semasa

■ Tertinggi dalam media social

(T) – Tiada

	FACEBOOK (FAN PAGE)	INSTAGRAM	TWITTER	
ALAMAT URL	7-Dis	7-Dis	7-Dis	JUMLAH
HEP	23,904	4,398	217	28,519
SGS	6,894	413	T	7,307
BKU	4,996	525	T	5,521
BKUPM	4,123	T	T	4,123
COSCOMM	T	T	5	5
PNC	950	T	8	958
PENDAFTAR	778	97	T	875
OSH	485	T	T	485
DEVEL	321	49	T	370
AUDIT	212	119	T	331
BURSAR	304	T	T	304
TNCJINM	126	T	T	126
TNCPI	100	T	T	100
AKADEMIK	102	T	T	102
PPUU	T	T	T	0

JADUAL 5.4: Data Media Sosial (*Follower*) Pejabat / Jabatan / Bahagian

DATA MEDIA SOSIAL (*FOLLOWER*): KOLEJ

■ Tertinggi dalam bulan semasa

■ Tertinggi dalam media sosial

(T) – Tiada

	FACEBOOK (FAN PAGE)	INSTAGRAM	TWITTER	
ALAMAT URL	7-Dis	7-Dis	7-Dis	JUMLAH
K10	3,821	1,834	933	6,588
KPZ	2,322	1,711	1,225	5,258
KTDI	2,406	1,892	444	4,742
K12	1,956	1,565	737	4,258
K13	2,065	1,505	287	3,857
KOSASS	1,724	1,775	540	4,039
KC	803	1,298	1,028	3,129
K14	630	885	565	2,080
K17	847	T	353	1,200

JADUAL 5.5: Data Media Sosial (*Follower*) Kolej

DATA MEDIA SOSIAL (*FOLLOWER*): PERKHIDMATAN

■ Tertinggi dalam bulan semasa

■ Tertinggi dalam media sosial

(T) – Tiada

	FACEBOOK (FAN PAGE)	INSTAGRAM	TWITTER	
ALAMAT URL	7-Dis	7-Dis	7-Dis	JUMLAH
LIB	6,093	1,168	698	7,959
HPUPM	5,105	986	236	6,327
TPU	4,168	848	T	5,016
SCIENCEPARK	3,738	908	T	4,646
SUKAN	2,977	T	159	3,136
PALAPES	2,709	T	540	3,249
PENERBIT	172	T	113	285

JADUAL 6.6: Data Media Sosial (*Follower*) Perkhidmatan

6.0

DATA LAMAN WEB PTJ: BROKENLINK

DATA LAMAN WEB UPM: BROKENLINK

26,485

MUKA SURAT

6.1	Data BROKENLINK: FAKULTI	41
6.2	Data BROKENLINK: INSTITUT	42
6.3	Data BROKENLINK: PUSAT	43
6.4	Data BROKENLINK: PEJABAT / JABATAN / BAHAGIAN	44
6.5	Data BROKENLINK: KOLEJ	45
6.6	Data BROKENLINK: PERKHIDMATAN	46

DEFINISI Jumlah pautan ke laman web luar UPM yang tidak berfungsi (laman web tidak dapat dipaparkan atau menerima kod ralat).

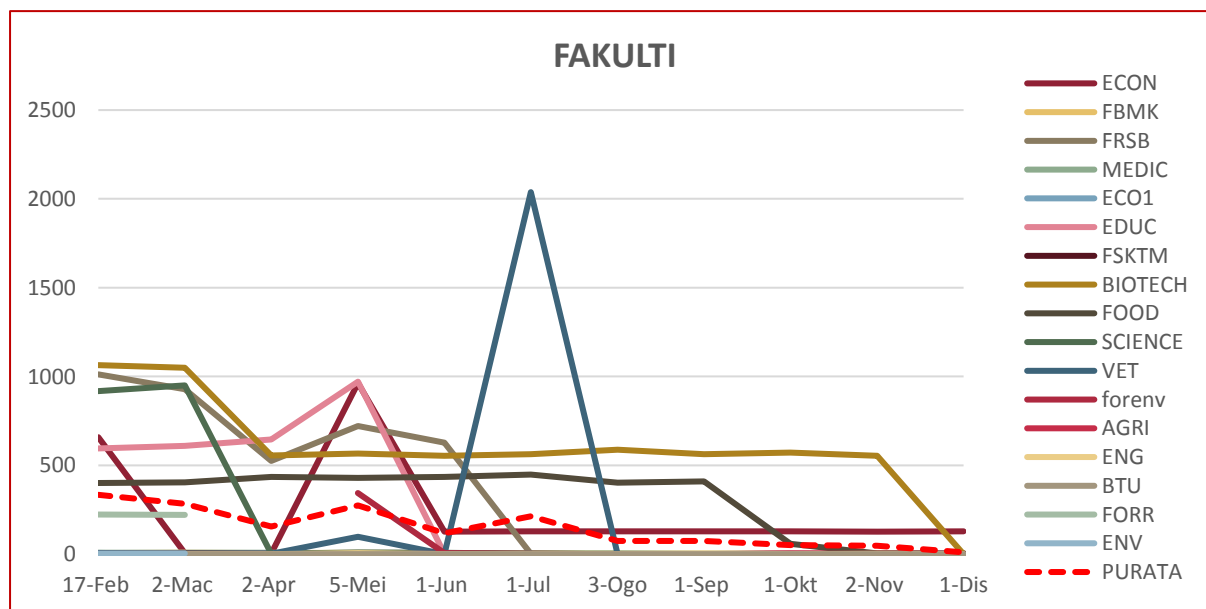
SUMBER DATA <https://www.upm.edu.my/webinfo>

DATA BROKENLINK: FAKULTI

■ Tertinggi dalam bulan semasa

ALAMAT URL	17-Feb	2-Mac	2-Apr	5-Mei	1-Jun	1-Jul	3-Ogo	1-Sep	1-Okt	2-Nov	1-Dis
ECON	658	6	4	963	126	128	128	128	128	126	128
FBMK	6	8	6	8	6	6	4	2	4	6	6
FRSB	1,012	928	525	722	627	2	0	0	0	2	6
MEDIC	8	8	8	2	6	4	4	2	4	2	4
ECO1	7	0	4	2	0	0	0	0	0	0	4
EDUC	596	610	645	971	2	0	0	0	6	6	2
FSKTM	2	4	2	4	2	0	0	0	0	2	2
BIOTECH	1,064	1,050	555	566	554	563	588	563	572	554	0
FOOD	401	405	435	430	434	448	402	410	58	4	0
SCIENCE	918	950	2	10	8	2	0	0	0	0	0
VET	4	2	2	97	0	2,038	0	0	0	0	0
FORENV	-	-	-	344	6	2	0	0	2	0	0
AGRI	0	0	0	0	2	0	0	0	2	2	0
ENG	0	0	0	6	1	0	0	4	0	2	0
BTU	0	0	0	0	0	0	0	0	0	0	0
FORR	223	221	-	-	-	-	-	-	-	-	-
ENV	2	4	-	-	-	-	-	-	-	-	-
PURATA	334	284	156	275	118	213	75	74	52	47	10

JADUAL 6.1: Data Brokenlink Fakulti



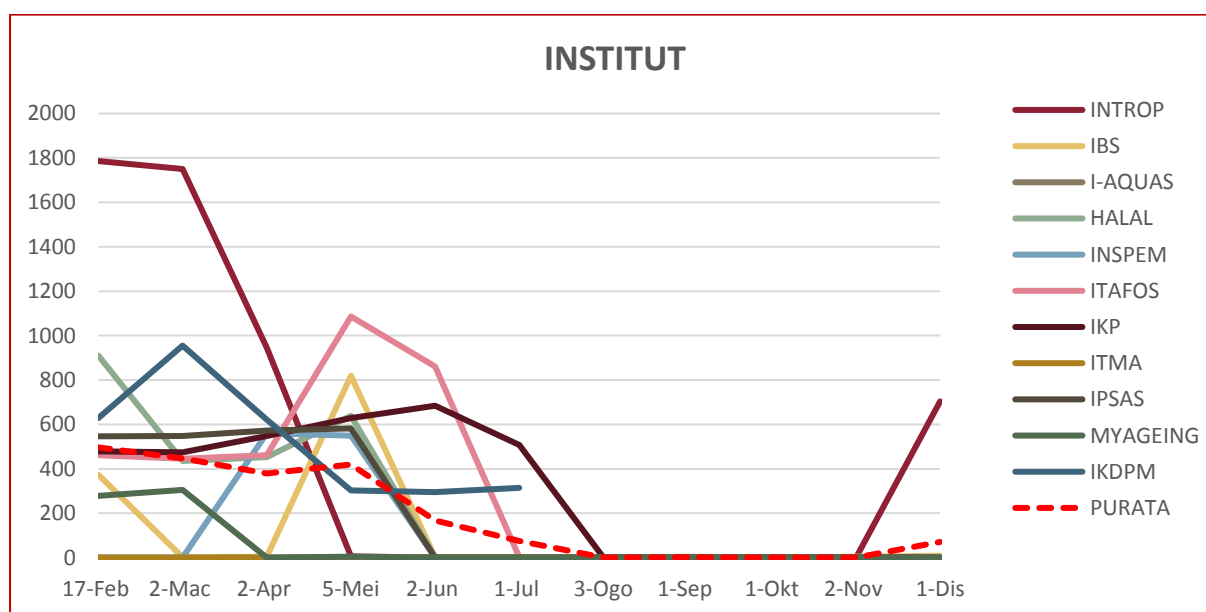
RAJAH 6.1: Data Brokenlink Fakulti

DATA BROKENLINK: INSTITUT

■ Tertinggi dalam bulan semasa

ALAMAT URL	17-Feb	2-Mac	2-Apr	5-Mei	2-Jun	1-Jul	3-Ogo	1-Sep	1-Okt	2-Nov	1-Dis
INTROP	1,786	1,750	946	6	0	0	2	0	0	0	704
IBS	373	2	4	819	0	0	0	4	2	4	8
I-AQUAS	0	0	0	0	0	2	2	2	2	0	0
HALAL	910	435	452	639	0	0	0	0	0	0	0
INSPEM	0	0	560	549	0	0	0	2	0	0	0
ITAFOS	461	445	462	1,086	860	1	0	0	0	0	0
IKP	478	474	548	628	684	508	0	0	0	0	0
ITMA	0	0	0	2	2	2	0	0	0	0	0
IPSAS	547	548	573	582	0	0	0	0	0	0	0
MYAGEING	278	305	0	4	0	0	0	0	0	0	0
IKDPM	629	955	621	303	295	314	-	-	-	-	-
PURATA	497	447	379	420	167	75	0	1	0	0	71

JADUAL 6.2: Data Brokenlink Institut



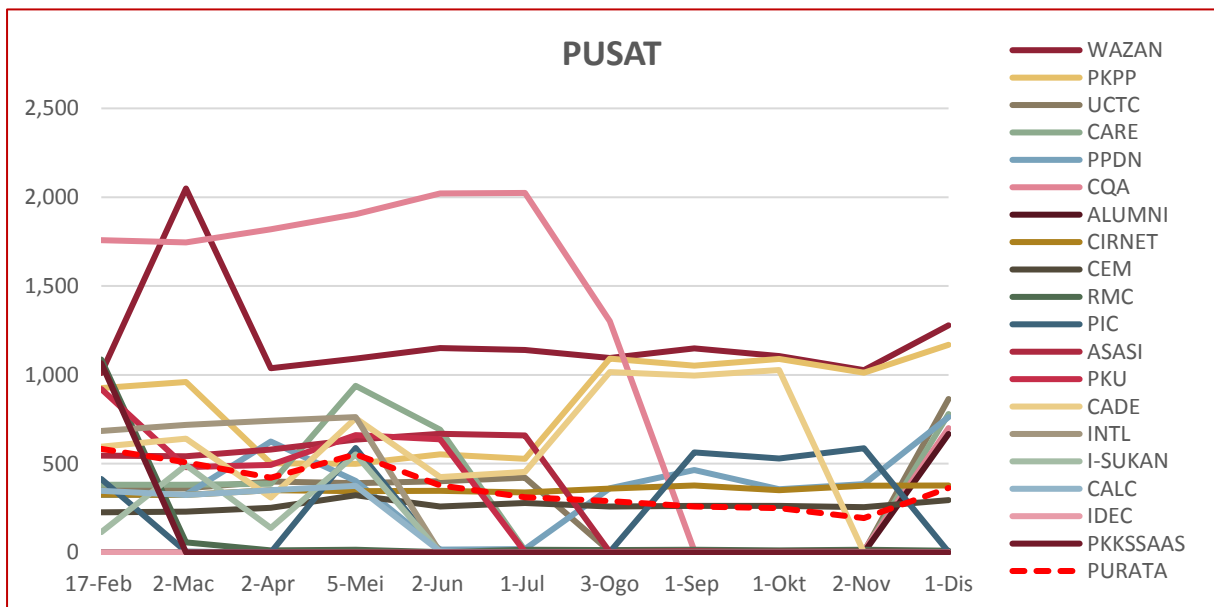
RAJAH 6.2: Data Brokenlink Institut

DATA BROKENLINK: PUSAT

■ Tertinggi dalam bulan semasa

ALAMAT URL	17-Feb	2-Mac	2-Apr	5-Mei	2-Jun	1-Jul	3-Ogo	1-Sep	1-Okt	2-Nov	1-Dis
WAZAN	1,010	2,049	1,037	1,092	1,151	1,140	1,094	1,148	1,106	1,027	1,278
PKPP	925	959	502	499	553	527	1,091	1,051	1,089	1,011	1,169
UCTC	360	361	399	391	401	420	6	6	6	4	864
CARE	381	381	386	938	691	12	0	4	4	2	780
PPDN	324	326	624	403	16	18	362	464	356	384	762
CQA	1,758	1,745	1,820	1,904	2,021	2,024	1,302	10	8	10	700
ALUMNI	0	0	0	0	0	0	0	0	0	0	667
CIRNET	325	324	350	345	347	338	360	377	350	376	377
CEM	226	230	252	322	259	279	258	263	263	255	294
RMC	1,086	56	12	16	2	16	14	16	12	16	10
PIC	414	4	0	588	0	2	2	564	528	586	2
ASASI	545	542	580	636	668	658	2	3	4	4	2
PKU	920	481	492	661	637	2	2	7	0	0	1
CADE	596	640	309	756	425	454	1,016	996	1,027	0	0
INTL	684	718	741	762	0	2	0	0	0	2	0
I-SUKAN	115	491	137	552	0	0	0	0	0	0	0
CALC	346	324	350	375	6	0	0	0	0	0	0
IDEC	0	0	0	0	0	0	2	0	0	0	0
PKKSSAAS	1,065	0	0	0	0	0	0	0	0	0	0
PURATA	583	507	421	552	378	310	290	258	250	194	363

JADUAL 6.3: Data Brokenlink Pusat



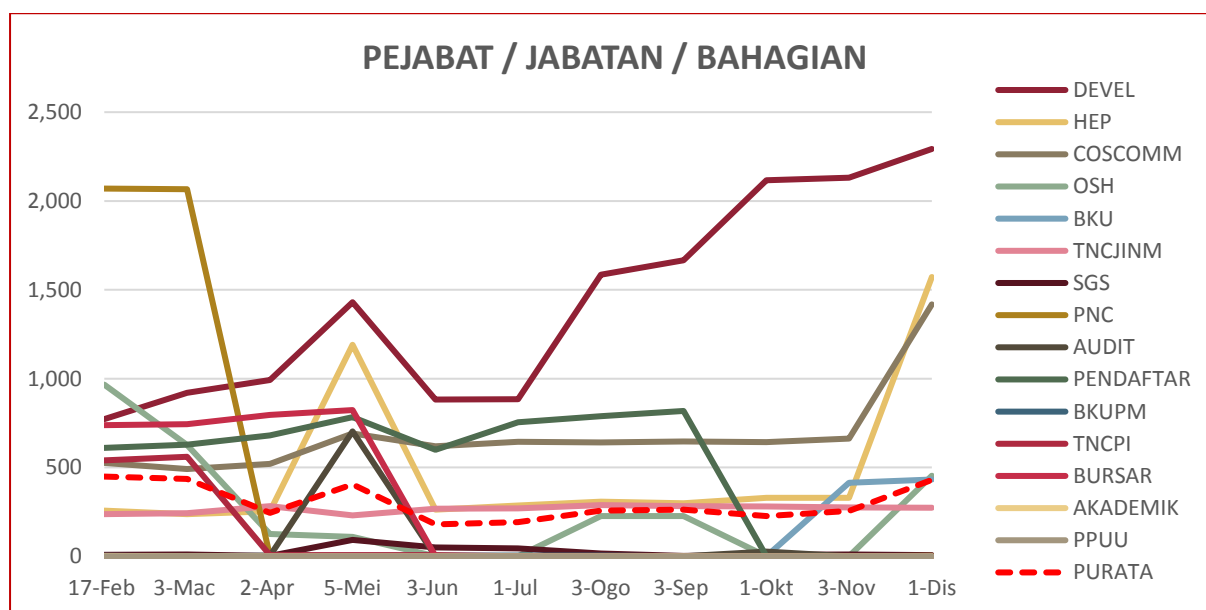
JADUAL 6.3: Data Brokenlink Pusat

DATA BROKENLINK: PEJABAT / JABATAN / BAHAGIAN

■ Tertinggi dalam bulan semasa

ALAMAT URL	17-Feb	3-Mac	2-Apr	5-Mei	3-Jun	1-Jul	3-Ogo	3-Sep	1-Okt	3-Nov	1-Dis
DEVEL	772	921	993	1,430	882	884	1,586	1,666	2,117	2,131	2,293
HEP	257	237	254	1,191	263	285	308	298	329	329	1,572
COSCOMM	526	491	520	692	619	645	640	647	643	662	1,418
OSH	966	626	126	109	0	0	227	226	0	0	454
BKU	0	0	0	0	0	0	0	0	0	414	432
TNCJINM	237	243	282	230	268	270	288	283	281	275	273
SGS	8	10	2	92	50	44	16	2	8	10	6
PNC	2,070	2,067	0	0	0	0	0	0	0	0	2
AUDIT	0	0	2	703	0	0	0	0	26	0	0
PENDAFTAR	611	629	680	784	600	755	789	818	0	0	0
BKUPM	2	0	2	4	4	4	4	0	0	0	0
TNCPI	539	560	6	6	6	0	0	0	0	0	0
BURSAR	738	744	795	823	0	0	0	0	0	0	0
AKADEMIK	2	0	0	0	0	0	0	0	0	0	0
PPUU	0	0	0	0	0	0	0	0	0	0	0
PURATA	449	435	244	404	179	192	257	263	227	255	430

JADUAL 6.4: Data Brokenlink Pejabat / Jabatan / Bahagian



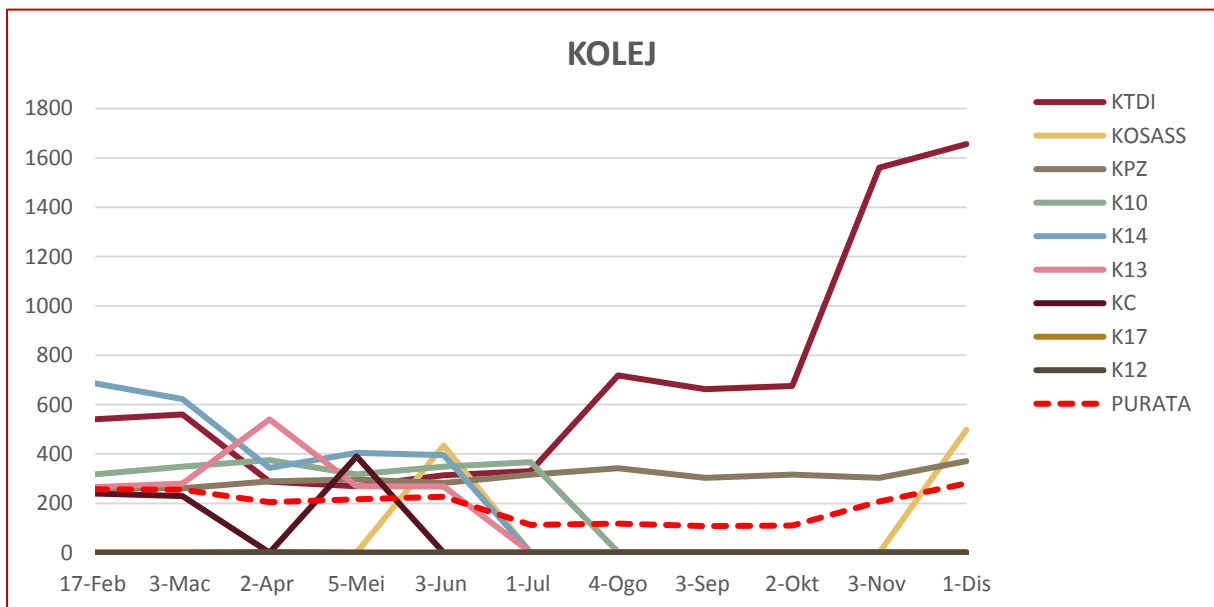
RAJAH 6.4: Data Brokenlink Pejabat / Jabatan / Bahagian

DATA BROKENLINK: KOLEJ

■ Tertinggi dalam bulan semasa

ALAMAT URL	17-Feb	3-Mac	2-Apr	5-Mei	3-Jun	1-Jul	4-Ogo	3-Sep	2-Okt	3-Nov	1-Dis
KTDI	540	560	288	269	314	330	719	663	676	1,560	1,656
KOSASS	0	0	0	0	434	0	0	0	0	0	498
KPZ	263	261	289	297	283	316	342	303	316	303	371
K10	317	348	375	318	349	367	2	2	2	2	0
K14	686	622	344	405	395	0	0	0	0	0	0
K13	265	280	540	269	268	0	0	0	0	0	0
KC	239	229	0	390	0	0	0	0	0	0	0
K17	0	0	0	0	0	0	0	0	0	0	0
K12	0	0	2	0	0	0	0	0	0	0	0
PURATA	257	256	204	216	227	113	118	108	110	207	281

JADUAL 6.5: Data Brokenlink Kolej



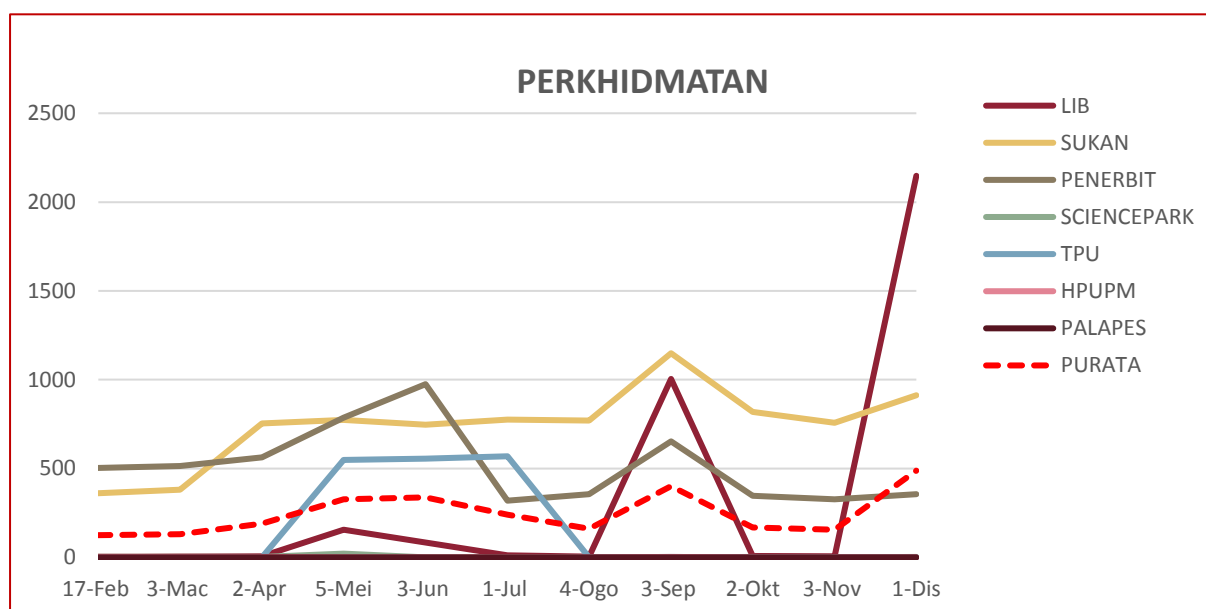
RAJAH 6.5: Data Brokenlink Kolej

DATA BROKENLINK: PERKHIDMATAN

■ Tertinggi dalam bulan semasa

ALAMAT URL	17-Feb	3-Mac	2-Apr	5-Mei	3-Jun	1-Jul	4-Ogo	3-Sep	2-Okt	3-Nov	1-Dis
LIB	0	4	6	156	84	12	4	1,004	8	6	2,148
SUKAN	361	381	754	774	746	776	770	1,149	818	758	912
PENERBIT	504	514	562	786	975	319	356	653	346	326	355
SCIENCEPARK	5	5	3	21	0	0	0	0	2	0	2
TPU	0	0	0	549	556	569	0	2	0	0	0
HPUPM	4	4	2	0	0	0	0	2	0	0	0
PALAPES	0	0	0	0	0	0	0	0	0	0	0
PURATA	125	130	190	327	337	239	161	401	168	156	488

JADUAL 6.6: Data Brokenlink Perkhidmatan



RAJAH 6.6: Data Brokenlink Perkhidmatan

7.0

DATA LAMAN WEB PTJ: PUTRA BAKTI

DATA LAMAN WEB UPM: PUTRA BAKTI

0

MUKA SURAT

7.1	Data BROKENLINK: FAKULTI	48
7.2	Data BROKENLINK: INSTITUT	48
7.3	Data BROKENLINK: PUSAT	49
7.4	Data BROKENLINK: PEJABAT / JABATAN / BAHAGIAN	49
7.5	Data BROKENLINK: KOLEJ	50
7.6	Data BROKENLINK: PERKHIDMATAN	50

DEFINISI

JUMLAH kandungan laman web PTJ berkaitan aktiviti jaringan industri dan masyarakat luar

■ Tertinggi dalam bulan semasa

DATA PUTRA BAKTI: FAKULTI

ALAMAT URL	17-Feb	10-Mac	3-Apr	5-Mei	5-Jun	1-Jul	12-Ogo	9-Sep	7-Okt	11-Nov	1-Dis
BTU	0	0	0	0	0	2	2	0	0	0	2
AGRI	0	0	0	0	0	0	0	0	0	0	0
BIOTECH	0	0	0	0	0	0	0	0	0	0	0
ECO1	0	0	0	0	0	0	0	0	0	0	0
ECON	0	0	0	0	0	0	0	0	0	0	0
EDUC	0	0	0	0	0	0	0	0	0	0	0
ENG	0	0	0	0	0	0	0	0	0	0	0
FBMK	0	0	0	0	0	0	0	0	0	0	0
FOOD	0	0	0	0	0	0	0	0	0	0	0
FORENV	-	-	-	0	0	0	0	0	0	0	0
FRSB	0	0	0	0	0	0	0	0	0	0	0
FSKTM	0	0	0	0	0	0	0	0	0	0	0
MEDIC	0	0	0	0	0	0	0	0	0	0	0
SCIENCE	0	0	0	0	0	0	0	0	0	0	0
VET	0	0	0	0	0	0	0	0	0	0	0
ENV	0	0	-	-	-	-	-	-	-	-	-
FORR	0	0	-	-	-	-	-	-	-	-	-
PURATA	0	0	0	0	0	0	0	0	0	0	0

JADUAL 7.1: Data Putra Bakti Fakulti

DATA PUTRA BAKTI: INSTITUT

ALAMAT URL	17-Feb	10-Mac	3-Apr	5-Mei	5-Jun	1-Jul	12-Ogo	9-Sep	7-Okt	11-Nov	1-Dis
HALAL	0	0	0	0	0	0	0	0	0	0	0
I-AQUAS	0	0	0	0	0	0	0	0	0	0	0
IBS	0	0	0	0	0	0	0	0	0	0	0
IKP	0	0	0	0	0	0	0	0	0	0	0
INSPEM	0	0	0	0	0	0	0	0	0	0	0
INTROP	0	0	0	0	0	0	0	0	0	0	0
IPSAS	0	0	0	0	0	0	0	0	0	0	0
ITAFOS	0	0	0	0	0	0	0	0	0	0	0
ITMA	0	0	0	0	0	0	0	0	0	0	0
MYAGEING	0	0	0	0	0	0	0	0	0	0	0
IKDPM	0	0	0	0	0	0	0	-	-	-	-
PURATA	0	0	0	0	0	0	0	0	0	0	0

JADUAL 7.2: Data Putra Bakti Institut

DATA PUTRA BAKTI: PUSAT

ALAMAT URL	17-Feb	10-Mac	3-Apr	5-Mei	5-Jun	1-Jul	12-Ogo	9-Sep	7-Okt	11-Nov	1-Dis
ALUMNI	0	0	0	0	0	0	0	0	0	0	0
ASASI	0	0	0	0	0	0	0	0	0	0	0
CADE	0	0	0	0	0	0	0	0	0	0	0
CALC	0	0	0	0	0	0	0	0	0	0	0
CARE	0	0	0	0	0	0	0	0	0	0	0
CEM	0	0	0	0	0	0	0	0	0	0	0
CIRNET	0	0	0	0	0	0	0	0	0	0	0
CQA	0	0	0	0	0	0	0	0	0	0	0
IDEC	0	0	0	0	0	0	0	0	0	0	0
INTL	0	0	0	0	0	0	0	0	0	0	0
I-SUKAN	0	0	0	0	0	0	0	0	0	0	0
PIC	0	0	0	0	0	0	0	0	0	0	0
PKK	0	0	0	0	0	0	0	0	0	0	0
PKKSSAAS	0	0	0	0	0	0	0	0	0	0	0
PKU	0	0	0	0	0	0	0	0	0	0	0
PPDN	0	0	0	0	0	0	0	0	0	0	0
RMC	0	0	0	0	0	0	0	0	0	0	0
UCTC	0	0	0	0	0	0	0	0	0	0	0
WAZAN	0	0	0	0	0	0	0	0	0	0	0
PURATA	0	0	0	0	0	0	0	0	0	0	0

JADUAL 7.3: Data Putra Bakti Pusat

DATA PUTRA BAKTI: PEJABAT / JABATAN / BAHAGIAN

ALAMAT URL	17-Feb	10-Mac	3-Apr	5-Mei	5-Jun	1-Jul	12-Ogo	9-Sep	7-Okt	12-Nov	1-Dis
AKADEMIK	0	0	0	0	0	0	0	0	0	0	0
AUDIT	0	0	0	0	0	0	0	0	0	0	0
BKU	0	0	0	0	0	0	0	0	0	0	0
BKUPM	0	0	0	0	0	0	0	0	0	0	0
BURSAR	0	0	0	0	0	0	0	0	0	0	0
COSCOMM	0	0	0	0	0	0	0	0	0	0	0
DEVEL	0	0	0	0	0	0	0	0	0	0	0
HEP	0	0	0	0	0	0	0	0	0	0	0
OSH	0	0	0	0	0	0	0	0	0	0	0
PENDAFTAR	0	0	0	0	0	0	0	0	0	0	0
PNC	0	0	0	0	0	0	0	0	0	0	0
PPUU	0	0	0	0	0	0	0	0	0	0	0
SGS	0	0	0	0	0	0	0	0	0	0	0
TNCJINM	0	0	0	0	0	0	0	0	0	0	0
TNCPI	0	0	0	0	0	0	0	0	0	0	0
PURATA	0	0	0	0	0	0	0	0	0	0	0

JADUAL 7.4: Data Putra Bakti Pejabat / Jabatan / Bahagian

■ Tertinggi dalam bulan semasa

DATA PUTRA BAKTI: KOLEJ

ALAMAT URL	17-Feb	10-Mac	3-Apr	5-Mei	5-Jun	1-Jul	12-Ogo	9-Sep	7-Okt	12-Nov	1-Dis
K10	0	0	0	0	0	0	0	0	0	0	0
K12	0	0	0	0	0	0	0	0	0	0	0
K13	0	0	0	0	0	0	0	0	0	0	0
K14	0	0	0	0	0	0	0	0	0	0	0
K17	0	0	0	0	0	0	0	0	0	0	0
KC	0	0	0	0	0	0	0	0	0	0	0
KOSASS	0	0	0	0	0	0	0	0	0	0	0
KPZ	0	0	0	0	0	0	0	0	0	0	0
KTDI	0	0	0	0	0	0	0	0	0	0	0
PURATA	0	0	0	0	0	0	0	0	0	0	0

JADUAL 7.5: Data Putra Bakti Kolej

DATA PUTRA BAKTI: PERKHIDMATAN

ALAMAT URL	17-Feb	10-Mac	3-Apr	5-Mei	5-Jun	1-Jul	12-Ogo	9-Sep	7-Okt	12-Nov	1-Dis
HPUPM	0	1	0	0	0	0	0	0	0	0	0
LIB	0	0	0	0	0	0	0	0	0	0	0
PALAPES	0	0	0	0	0	0	0	0	0	0	0
PENERBIT	0	0	0	0	0	0	0	0	0	0	0
SCIENCEPARK	0	0	0	0	0	0	0	0	0	0	0
SUKAN	0	0	0	0	0	0	0	0	0	0	0
TPU	0	0	0	0	0	0	0	0	0	0	0
PURATA	0	0	0	0	0	0	0	0	0	0	0

JADUAL 7.6: Data Putra Bakti Perkhidmatan

8.0

DATA LAMAN WEB PTJ: CARIAN DI WEB UPM

MUKA SURAT

8.1

Data CARIAN: PENGGUNA WEB

52

DEFINSI

90++ CARIAN di laman web UPM oleh pengguna web di dalam kampus dan pengguna web di luar kampus.

61.	kerja kosong	20	81.	kertas kerja	15
62.	Diploma	20	82.	LAX	15
63.	email	19	83.	Pendaftar	15
64.	SISTEM PERMOHONAN JAWATAN	19	84.	Scholarship	15
65.	igims	19	85.	nursing	15
66.	logo	19	86.	vacancy	15
67.	law	19	87.	dekan	15
68.	scopus	19	88.	masters	14
69.	kewangan	18	89.	PJJ	14
70.	Tuition Fee	18	90.	music	14
71.	97699065	18	91.	hazri	14
72.	Takwim	18	92.	frgs	14
73.	engineering	18	93.	journal	14
74.	Courses	17	94.	program	13
75.	Doctor	17	95.	Spj online	13
76.	Payment	17	96.	hafiz	13
77.	course	17	97.	azlan	13
78.	covid	16	98.	kalendar akademik	13
79.	Bendahari	16	99.	Naib canselor	13
80.	online	16			

RINGKASAN CARIAN

TOPIK POPULAR

1. Jawatan kosong
 2. Phd / master / Postgraduate / Diploma
 3. staff / staf / jawatan / direktori
 4. fees / Yuran / Scholarship / Tuition Fee
 5. library / Faculties / sgs
 6. apply / application
 7. thesis
 8. Admission
 9. calendar / kalendar akademik / takwim
 10. EZACCESS / ezproxy
 11. latihan industri
 12. tender
 13. piagam pelanggan
-